

Product datasheet

Anti-groEL antibody [9A1/2] ab82592

5 References 1 图像

概述

产品名称	Anti-groEL 抗体[9A1/2]
描述	小鼠单克隆抗体[9A1/2] to groEL
宿主	Mouse
经测试应用	适用于: WB, IP
种属反应性	与反应: Escherichia coli
免疫原	Full length protein corresponding to Escherichia coli groEL. Database link: P0A6F5
阳性对照	E. coli lysate.
常规说明	Abcam is committed to meeting high standards of ethical manufacturing and has decided to discontinue this product by June 2019 as it has been generated by the ascites method. We are sorry for any inconvenience this may cause. We would recommend antibody ab90522 as a replacement.

性能

形式	Liquid
存放说明	Shipped at 4°C. Upon delivery aliquot and store at -20°C. Avoid freeze / thaw cycles.
存储溶液	Preservative: 0.09% Sodium Azide Constituents: 50% Glycerol, PBS
纯度	Protein G purified
克隆	单克隆
克隆编号	9A1/2
同种型	IgG1

应用

Our [Abpromise guarantee](#) covers the use of **ab82592** in the following tested applications.
The application notes include recommended starting dilutions; optimal dilutions/concentrations should be determined by the end user.

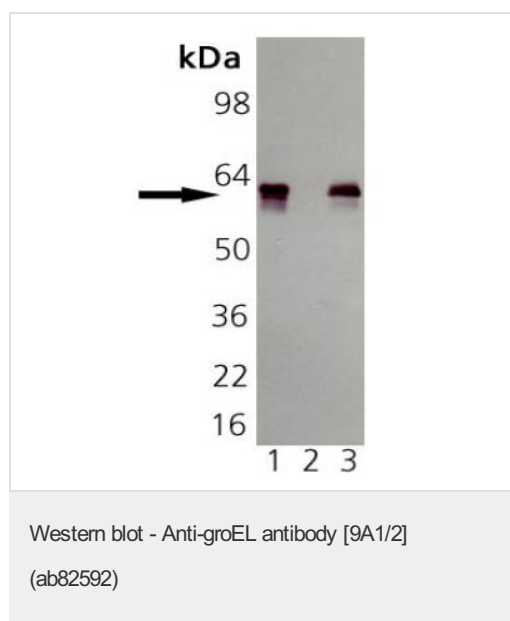
应用	Ab评论	说明
WB		1/1000. Detects a band of approximately 57 kDa (predicted molecular weight: 57 kDa).
IP		Use at an assay dependent dilution.

靶标

相关性 The bacterial chaperonin groEL is a double toroidal assembly, which together with the action of the ring-shaped oligomeric cochaperonin, GroES, facilitates protein folding in an ATP dependent manner.

细胞定位 Cytoplasmic

图片



All lanes : Anti-groEL antibody [9A1/2] (ab82592) at 1/1000 dilution

Lane 1 : groEL recombinant E. coli protein

Lane 2 : Hsp60 recombinant human protein (negative control)

Lane 3 : E. coli lysate

Developed using the ECL technique.

Predicted band size: 57 kDa

Observed band size: 57 kDa

Please note: All products are "FOR RESEARCH USE ONLY AND ARE NOT INTENDED FOR DIAGNOSTIC OR THERAPEUTIC USE"

Our Abpromise to you: Quality guaranteed and expert technical support

- Replacement or refund for products not performing as stated on the datasheet
- Valid for 12 months from date of delivery
- Response to your inquiry within 24 hours
- We provide support in Chinese, English, French, German, Japanese and Spanish
- Extensive multi-media technical resources to help you
- We investigate all quality concerns to ensure our products perform to the highest standards

If the product does not perform as described on this datasheet, we will offer a refund or replacement. For full details of the Abpromise, please visit <http://www.abcam.cn/abpromise> or contact our technical team.

Terms and conditions

- Guarantee only valid for products bought direct from Abcam or one of our authorized distributors