

Product datasheet

Anti-gamma Tubulin antibody ab50721

★★★★☆ 1 Abreviews 3 References 1 图像

概述

产品名称	Anti-gamma Tubulin抗体
描述	兔多克隆抗体to gamma Tubulin
经测试应用	适用于: ICC/IF, WB
种属反应性	与反应: Caenorhabditis elegans
免疫原	Synthetic peptide LDEYKAVVQKDYLTRGL with N-terminal added cysteine conjugated to KLH, corresponding to C terminal amino acids 428-444 of Caenorhabditis elegans gamma Tubulin
	Run BLAST with Run BLAST with
阳性对照	Whole extract of <i>C. elegans</i>

性能

形式	Liquid
存放说明	Shipped at 4°C. Store at +4°C short term (1-2 weeks). Upon delivery aliquot. Store at -20°C or -80°C. Avoid freeze / thaw cycle.
存储溶液	Preservative: 15mM Sodium Azide Constituents: 0.01M PBS, pH 7.4
纯度	Immunogen affinity purified
克隆	多克隆
同种型	IgG

应用

Our [Abpromise guarantee](#) covers the use of **ab50721** in the following tested applications.

The application notes include recommended starting dilutions; optimal dilutions/concentrations should be determined by the end user.

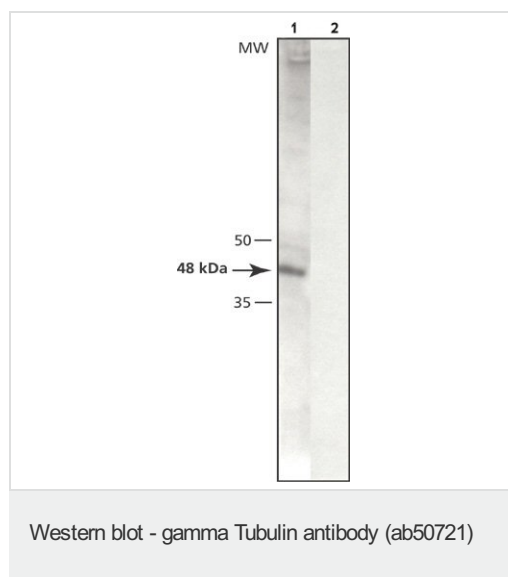
应用	Ab评论	说明
ICC/IF	★★★★☆	1/50.

应用	Ab评论	说明
WB		Use a concentration of 0.75 - 1.5 µg/ml. Predicted molecular weight: 48 kDa.

靶标

功能	Tubulin is the major constituent of microtubules. Gamma tubulin is found at microtubule organizing centers (MTOC) such as the spindle poles or the centrosome. Pericentriolar matrix component that regulates alpha/beta tubulin minus-end nucleation, centrosome duplication and spindle formation.
序列相似性	Belongs to the tubulin family.
翻译后修饰	Phosphorylation at Ser-131 by BRSK1 regulates centrosome duplication, possibly by mediating relocation of gamma-tubulin and its associated proteins from the cytoplasm to the centrosome.
细胞定位	Cytoplasm > cytoskeleton > centrosome.

图片



All lanes : Anti-gamma Tubulin antibody (ab50721) at 1/2000 dilution

Lane 1 : *C. elegans* whole extract

Lane 2 : *C. elegans* whole extract with gamma Tubulin immunizing peptide at 20 µg/ml

Secondary

Goat Anti-Rabbit IgG, Peroxidase conjugate and chemiluminescent substrate

Developed using the ECL technique

Predicted band size : 48 kDa

Observed band size : 48 kDa

Please note: All products are "FOR RESEARCH USE ONLY AND ARE NOT INTENDED FOR DIAGNOSTIC OR THERAPEUTIC USE"

Our Abpromise to you: Quality guaranteed and expert technical support

- Replacement or refund for products not performing as stated on the datasheet
- Valid for 12 months from date of delivery
- Response to your inquiry within 24 hours
- We provide support in Chinese, English, French, German, Japanese and Spanish
- Extensive multi-media technical resources to help you

- We investigate all quality concerns to ensure our products perform to the highest standards

If the product does not perform as described on this datasheet, we will offer a refund or replacement. For full details of the Abpromise, please visit <http://www.abcam.cn/abpromise> or contact our technical team.

Terms and conditions

- Guarantee only valid for products bought direct from Abcam or one of our authorized distributors