

Product datasheet

Anti-eIF2B epsilon (phospho S539) antibody ab4775

2 References 1 图像

概述

产品名称	Anti-eIF2B epsilon (phospho S539)抗体
描述	兔多克隆抗体 to eIF2B epsilon (phospho S539)
宿主	Rabbit
特异性	This ab reacts with both human and rat (see, for example, PMID 21165642, 20484009 and 21832246) but it is not very clear if this recognition happens only when S535 (rat) and S544 (human) are phosphorylated or when S535 (rat)/S540 (human) are phosphorylated.
经测试应用	适用于: WB
种属反应性	与反应: Rat, Human
免疫原	Synthetic peptide (Rat) derived from the region of rat eIF-2B epsilon that contains serine 535 (corresponding to serine 539 in the human sequence).
阳性对照	Recombinant eIF-2B epsilon treated with GSK 3 beta and lambda phosphatase, CHO-T cells transfected with human insulin receptor (IR) +/- insulin.

性能

形式	Liquid
存放说明	Shipped at 4°C. Upon delivery aliquot and store at -20°C or -80°C. Avoid repeated freeze / thaw cycles.
存储溶液	Preservative: 0.05% Sodium Azide Constituents: PBS, 1.0mg/ml BSA (IgG, protease free). pH 7.3
纯度	Immunogen affinity purified
纯化说明	Purified from rabbit serum by sequential epitope-specific chromatography. The antibody has been negatively pre-adsorbed using (i) a non-phosphopeptide corresponding to the site of phosphorylation to remove antibody that is reactive with non-phosphorylated eukaryotic initiation factor 2B epsilon (eIF-2B epsilon), and (ii) a generic serine phosphorylated peptide to remove antibody that is reactive with phospho-serine, irrespective of the sequence. The final product is generated by affinity chromatography using an eIF-2B epsilon-derived peptide that is phosphorylated at serine 539.
克隆	多克隆
同种型	IgG

应用

Our [Abpromise guarantee](#) covers the use of **ab4775** in the following tested applications.

The application notes include recommended starting dilutions; optimal dilutions/concentrations should be determined by the end user.

应用	Ab评论	说明
WB		Use a concentration of 0.1 - 1 µg/ml. Detects a band of approximately 88 kDa (predicted molecular weight: 82 kDa).

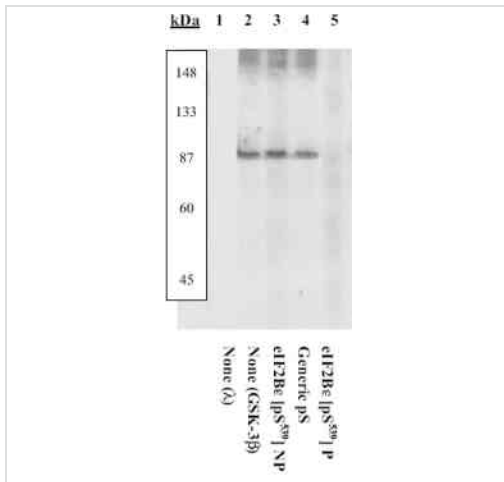
靶标

功能 Catalyzes the exchange of eukaryotic initiation factor 2-bound GDP for GTP.

疾病相关 Defects in EIF2B5 are a cause of leukodystrophy with vanishing white matter (VWM) [MIM:603896]. VWM is a leukodystrophy that occurs mainly in children. Neurological signs include progressive cerebellar ataxia, spasticity, inconstant optic atrophy and relatively preserved mental abilities. The disease is chronic-progressive with, in most individuals, additional episodes of rapid deterioration following febrile infections or minor head trauma. While childhood onset is the most common form of the disorder, some severe forms are apparent at birth. A severe, early-onset form seen among the Cree and Chippewayan populations of Quebec and Manitoba is called Cree leukoencephalopathy. Milder forms may not become evident until adolescence or adulthood. Some females with milder forms of the disease who survive to adolescence exhibit ovarian dysfunction. This variant of the disorder is called ovarioleukodystrophy.

序列相似性 Belongs to the eIF-2B gamma/epsilon subunits family.
Contains 1 W2 domain.

图片



Western blot - Anti-eIF2B epsilon (phospho S539) antibody (ab4775)

Peptide Competition: Recombinant eIF-2B epsilon treated with lambda phosphatase (1) or treated with GSK-3 beta (lanes 2-5) and added to background extracts were resolved by SDS-PAGE on a 10% Tris-glycine gel and transferred to PVDF. Membranes were blocked with a 5% BSA-TBST buffer overnight at 4°C, then were incubated with 0.50 µg/mL ab4775 antibody, following prior incubation with: no peptide (1, 2), the nonphosphopeptide corresponding to the immunogen (3), a generic phosphoserine containing peptide (4), or, the phosphopeptide immunogen (5). After washing, membranes were incubated with goat F(ab')₂ anti-rabbit IgG alkaline phosphatase and signals were detected using the Tropix WesternStar method. The data show that only the peptide corresponding to ab4775 blocks the antibody signal, thereby demonstrating the specificity of the antibody. The data also show the up-regulation of the ab4775 phospho signal upon stimulation with GSK-3 beta. Pep

Please note: All products are "FOR RESEARCH USE ONLY AND ARE NOT INTENDED FOR DIAGNOSTIC OR THERAPEUTIC USE"

Our Abpromise to you: Quality guaranteed and expert technical support

- Replacement or refund for products not performing as stated on the datasheet
- Valid for 12 months from date of delivery
- Response to your inquiry within 24 hours
- We provide support in Chinese, English, French, German, Japanese and Spanish
- Extensive multi-media technical resources to help you
- We investigate all quality concerns to ensure our products perform to the highest standards

If the product does not perform as described on this datasheet, we will offer a refund or replacement. For full details of the Abpromise, please visit <http://www.abcam.cn/abpromise> or contact our technical team.

Terms and conditions

- Guarantee only valid for products bought direct from Abcam or one of our authorized distributors