



Product datasheet

Anti-carabin antibody ab77625

1 References 1 图像

概述

产品名称	Anti-carabin抗体
描述	<p>山羊多克隆抗体to carabin</p> <div style="border: 1px solid #ccc; padding: 5px; margin-top: 10px;"> <p> 该产品是 快线抗体, 通过亲和纯化得到。对抗原肽有高灵敏度及特异性 (ELISA测试)。</p> <p style="text-align: right;">Read the terms of use »</p> </div>
宿主	Goat
种属反应性	<p>与反应: Human</p> <p>预测可用于: Mouse, Rat, Horse, Dog, Rhesus monkey </p>
免疫原	<p>Synthetic peptide:</p> <p>C-PRRKPQTRGKTFH</p> <p>, corresponding to internal sequence amino acids 405-417 of Human carabin (NP_940919.1).</p> <p style="text-align: right;">Run BLAST with Run BLAST with</p>
阳性对照	Human spleen lysates

性能

形式	Liquid
存放说明	Shipped at 4°C. Upon delivery aliquot and store at -20°C. Avoid repeated freeze / thaw cycles.
存储溶液	<p>Preservative: 0.02% Sodium Azide</p> <p>Constituents: 0.5% BSA, Tris saline, pH 7.3</p>
纯度	Immunogen affinity purified
纯化说明	ab77625 is purified from goat serum by ammonium sulphate precipitation followed by antigen affinity chromatography using the immunizing peptide.
克隆	多克隆
同种型	IgG

应用

Fast track antibodies constitute a diverse group of products that have been released to accelerate your research, but are not yet fully characterized. They have all been affinity purified and show high titre values against the immunizing peptide (by ELISA).

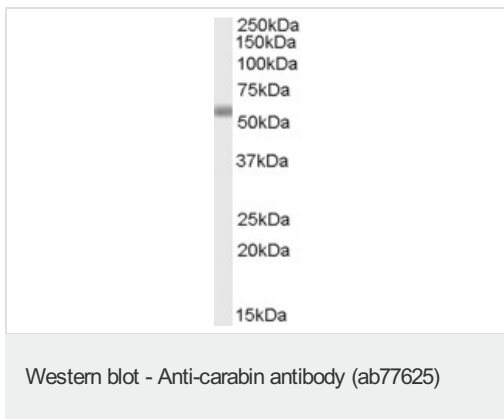
应用	Ab 评论	说明
WB		Use a concentration of 1 µg/ml. Preliminary experiments in human tonsil, thymus and peripheral mononucleocytes lysates gave no specific signal but low background.
ELISA		Use at an assay dependent dilution. For peptide ELISA: antibody detection limit dilution 1/128000.

靶标

功能	Inhibits the Ras signaling pathway through its intrinsic Ras GTPase-activating protein (GAP) activity. Acts as a negative feedback inhibitor of the calcineurin signaling pathway that also mediates crosstalk between calcineurin and Ras.
组织特异性	Most abundant in spleen and peripheral blood leukocytes.
序列相似性	Contains 1 Rab-GAP TBC domain.

图片

This Fast-Track antibody is not yet fully characterised. These images represent **inconclusive preliminary data**.



Anti-carabin antibody (ab77625) at 2 µg/ml +
Human Spleen lysate in RIPA buffer at 35 µg

Observed band size: 55 kDa

Primary incubation was 1 hour.

Please note: All products are "FOR RESEARCH USE ONLY AND ARE NOT INTENDED FOR DIAGNOSTIC OR THERAPEUTIC USE"

Terms and conditions

- Guarantee only valid for products bought direct from Abcam or one of our authorized distributors