


Product datasheet

Anti-alpha 2 Glycine Receptor antibody ab97628

1 References 3 图像

概述

产品名称	Anti-alpha 2 Glycine Receptor抗体
描述	兔多克隆抗体to alpha 2 Glycine Receptor
宿主	Rabbit
经测试应用	适用于: ICC/IF, WB, IHC-P
种属反应性	与反应: Human 预测可用于: Mouse, Rat, Cow, Zebrafish 
免疫原	Recombinant protein fragment corresponding to a region within N terminal amino acids 1 and 186 of alpha 2 Glycine Receptor.
阳性对照	ICC/IF: formaldehyde fixed SKNSH cells. WB: 293T, A431, H1299, HeLa S3, HepG2, MOLT4 or Raji cell lysates. IHC-P: MDAMB468 xenograft.

性能

形式	Liquid
存放说明	Shipped at 4°C. Upon delivery aliquot and store at -20°C or -80°C. Avoid repeated freeze / thaw cycles.
存储溶液	Preservative: 0.01% Thimerosal (merthiolate) Constituents: 10% Glycerol, 0.1M Tris, 0.1M Glycine, pH 7.0
纯度	Immunogen affinity purified
克隆	多克隆
同种型	IgG

应用

Our [Abpromise guarantee](#) covers the use of **ab97628** in the following tested applications.

The application notes include recommended starting dilutions; optimal dilutions/concentrations should be determined by the end user.

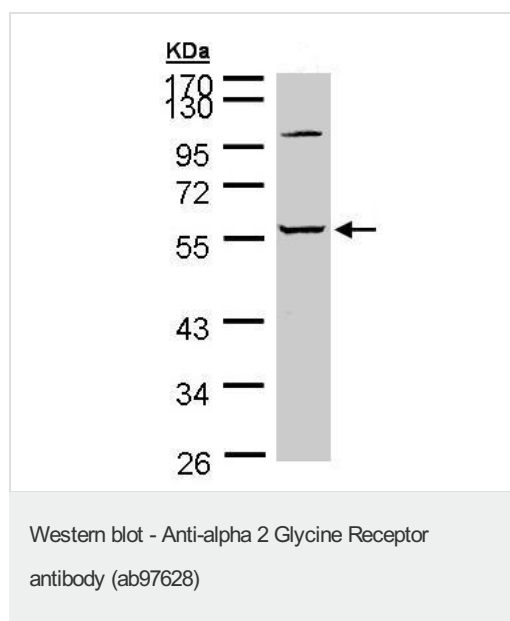
应用	Ab评论	说明
ICC/IF		Use a concentration of 5 µg/ml.

应用	Ab评论	说明
WB		1/500 - 1/3000. Predicted molecular weight: 52 kDa.
IHC-P		1/100 - 1/500.

靶标

功能	The glycine receptor is a neurotransmitter-gated ion channel. Binding of glycine to its receptor increases the chloride conductance and thus produces hyperpolarization (inhibition of neuronal firing).
序列相似性	Belongs to the ligand-gated ion channel (TC 1.A.9) family. Glycine receptor (TC 1.A.9.3) subfamily. GLRA2 sub-subfamily.
细胞定位	Cell junction > synapse > postsynaptic cell membrane. Cell membrane.

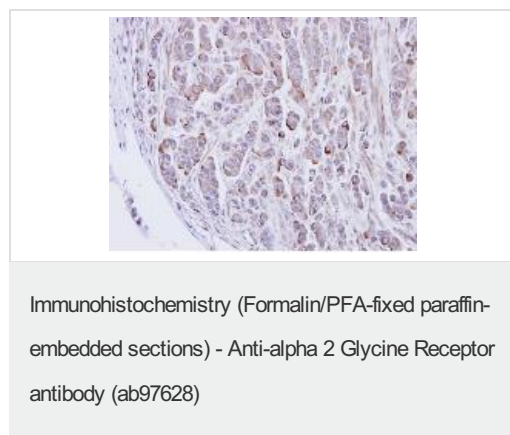
图片



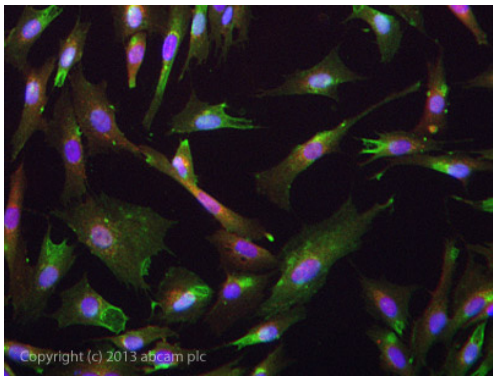
Anti-alpha 2 Glycine Receptor antibody (ab97628) at 1/5000 dilution + A431 whole cell lysate at 30 µg

Predicted band size: 52 kDa

10 % SDS PAGE



ab97628, at a 1/500 dilution, staining alpha 2 Glycine Receptor in paraffin embedded MDAMB468 xenograft by Immunohistochemistry.



Immunocytochemistry/ Immunofluorescence - Anti-alpha 2 Glycine Receptor antibody (ab97628)

ICC/IF image of ab97628 stained SKNSH cells. The cells were 4% formaldehyde fixed (10 min) and then incubated in 1%BSA / 10% normal goat serum / 0.3M glycine in 0.1% PBS-Tween for 1h to permeabilise the cells and block non-specific protein-protein interactions. The cells were then incubated with the antibody ab97628 at 5µg/ml overnight at +4°C. The secondary antibody (green) was DyLight® 488 goat anti- rabbit (ab96899) IgG (H+L) used at a 1/1000 dilution for 1h. Alexa Fluor® 594 WGA was used to label plasma membranes (red) at a 1/200 dilution for 1h. DAPI was used to stain the cell nuclei (blue) at a concentration of 1.43µM.

Please note: All products are "FOR RESEARCH USE ONLY AND ARE NOT INTENDED FOR DIAGNOSTIC OR THERAPEUTIC USE"

Our Abpromise to you: Quality guaranteed and expert technical support

- Replacement or refund for products not performing as stated on the datasheet
- Valid for 12 months from date of delivery
- Response to your inquiry within 24 hours
- We provide support in Chinese, English, French, German, Japanese and Spanish
- Extensive multi-media technical resources to help you
- We investigate all quality concerns to ensure our products perform to the highest standards

If the product does not perform as described on this datasheet, we will offer a refund or replacement. For full details of the Abpromise, please visit <http://www.abcam.cn/abpromise> or contact our technical team.

Terms and conditions

- Guarantee only valid for products bought direct from Abcam or one of our authorized distributors