

Product datasheet

Anti-alpha 1 Fetoprotein antibody ab8201

1 图像

概述

产品名称	Anti-alpha 1 Fetoprotein抗体
描述	兔多克隆抗体to alpha 1 Fetoprotein
宿主	Rabbit
特异性	Specificity of the antisera is confirmed by ELISA (OPD) on human alpha-Fetoprotein versus albumin, IgG, IgM. Ouchterlony double diffusion, immunoelectrophoresis. No crossreactivity with human plasma proteins.
经测试应用	适用于: Sandwich ELISA, Other
种属反应性	与反应: Human
免疫原	Full length protein (Human).

性能

形式	Liquid
存放说明	Shipped at 4°C. Store at +4°C short term (1-2 weeks). Upon delivery aliquot. Store at -20°C long term.
存储溶液	Preservative: None Constituents: Mannitol, Dextran, salts.
纯度	Immunogen affinity purified
纯化说明	The antiserum was subjected to absorption with immobilized human albumin fraction and globulin fractions and fibrinogen in order to remove non-specific antibodies. The affinity purified antibody is obtained by binding to immobilized human alpha-Fetoprotein (antigen used for immunization), followed by elution with acidic buffer, titration, dialysis, dispensing and lyophilization.
克隆	多克隆
同种型	IgG

应用

Our [Abpromise guarantee](#) covers the use of **ab8201** in the following tested applications.

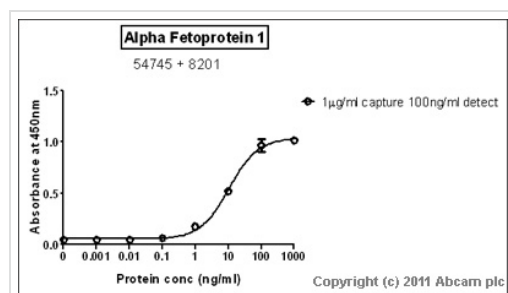
The application notes include recommended starting dilutions; optimal dilutions/concentrations should be determined by the end user.

应用	Ab评论	说明
Sandwich ELISA		Use a concentration of 0.1 µg/ml. Can be paired for Sandwich ELISA with Mouse monoclonal to alpha 1 Fetoprotein (ab54745) . For sandwich ELISA, use this antibody as Detection at 0.1 µg/ml with ab54745 as Capture.
AP		Use at an assay dependent concentration.
Other		Use at an assay dependent concentration.

靶标

功能	Binds copper, nickel, and fatty acids as well as, and bilirubin less well than, serum albumin. Only a small percentage (less than 2%) of the human AFP shows estrogen-binding properties.
组织特异性	Plasma. Synthesized by the fetal liver and yolk sac.
序列相似性	Belongs to the ALB/AFP/VDB family. Contains 3 albumin domains.
发展阶段	Occurs in the plasma of fetuses more than 4 weeks old, reaches the highest levels during the 12th-16th week of gestation, and drops to trace amounts after birth. The serum level in adults is usually less than 40 ng/ml. AFP occurs also at high levels in the plasma and ascitic fluid of adults with hepatoma.
翻译后修饰	Independent studies suggest heterogeneity of the N-terminal sequence of the mature protein and of the cleavage site of the signal sequence. Sulfated.
细胞定位	Secreted.

图片



Standard Curve for Alpha 1 Fetoprotein
dilution range 1pg/ml to 1ug/ml using Capture
Antibody [Mouse monoclonal to alpha 1 Fetoprotein \(ab54745\)](#) at 1ug/ml and Detector
Antibody [Rabbit polyclonal to alpha 1 Fetoprotein \(ab8201\)](#) at 0.1ug/ml

Sandwich ELISA - Anti-alpha 1 Fetoprotein antibody
(ab8201)

Please note: All products are "FOR RESEARCH USE ONLY AND ARE NOT INTENDED FOR DIAGNOSTIC OR THERAPEUTIC USE"

Our Abpromise to you: Quality guaranteed and expert technical support

- Replacement or refund for products not performing as stated on the datasheet
- Valid for 12 months from date of delivery
- Response to your inquiry within 24 hours

- We provide support in Chinese, English, French, German, Japanese and Spanish
- Extensive multi-media technical resources to help you
- We investigate all quality concerns to ensure our products perform to the highest standards

If the product does not perform as described on this datasheet, we will offer a refund or replacement. For full details of the Abpromise, please visit <http://www.abcam.cn/abpromise> or contact our technical team.

Terms and conditions

- Guarantee only valid for products bought direct from Abcam or one of our authorized distributors