


Product datasheet

Anti-alpha 1 Antichymotrypsin antibody ab107362

2 图像

概述

产品名称	Anti-alpha 1 Antichymotrypsin抗体
描述	兔多克隆抗体to alpha 1 Antichymotrypsin
宿主	Rabbit
经测试应用	适用于: IHC-P, WB
种属反应性	与反应: Human 预测可用于: Gorilla 
免疫原	Synthetic peptide conjugated to KLH derived from within residues 1 - 100 of Human alpha 1 Antichymotrypsin.参阅Abcam的专有抗源政策
阳性对照	This antibody gave a positive signal in the following Tissue lysates: Human Spinal cord; Human Colon; Hu Brain Frontal lobe (Alzheimers); Hu Plasma total protein. This antibody gave a positive result in IHC in the following FFPE tissue: Human pancreas adenocarcinoma.

性能

形式	Liquid
存放说明	Shipped at 4°C. Store at +4°C short term (1-2 weeks). Upon delivery aliquot. Store at -20°C or -80°C. Avoid freeze / thaw cycle.
存储溶液	pH: 7.40 Preservative: 0.02% Sodium azide Constituent: PBS Note: Batches of this product that have a concentration < 1mg/ml may have BSA added as a stabilising agent. If you would like information about the formulation of a specific lot, please contact our scientific support team who will be happy to help.
纯度	Immunogen affinity purified
克隆	多克隆
同种型	IgG

应用

Our [Abpromise guarantee](#) covers the use of **ab107362** in the following tested applications.

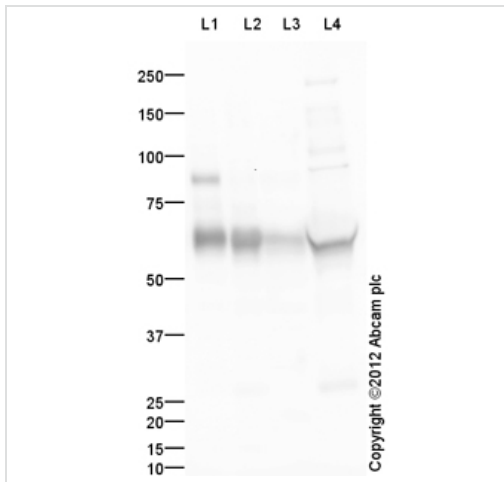
The application notes include recommended starting dilutions; optimal dilutions/concentrations should be determined by the end user.

应用	Ab评论	说明
IHC-P		Use a concentration of 1 µg/ml.
WB		Use a concentration of 1 µg/ml. Detects a band of approximately 60 kDa (predicted molecular weight: 48 kDa).

靶标

功能	Although its physiological function is unclear, it can inhibit neutrophil cathepsin G and mast cell chymase, both of which can convert angiotensin-1 to the active angiotensin-2.
组织特异性	Plasma. Synthesized in the liver. Like the related alpha-1-antitrypsin, its concentration increases in the acute phase of inflammation or infection. Found in the amyloid plaques from the hippocampus of Alzheimer disease brains.
疾病相关	Defects in SERPINA3 may be a cause of chronic obstructive pulmonary disease (COPD) [MIM:107280].
序列相似性	Belongs to the serpin family.
结构域	The reactive center loop (RCL) extends out from the body of the protein and directs binding to the target protease. The protease cleaves the serpin at the reactive site within the RCL, establishing a covalent linkage between the carboxyl group of the serpin reactive site and the serine hydroxyl of the protease. The resulting inactive serpin-protease complex is highly stable.
细胞定位	Secreted.

图片



Western blot - Anti-alpha 1 Antichymotrypsin antibody (ab107362)

All lanes : Anti-alpha 1 Antichymotrypsin antibody (ab107362) at 1 µg/ml

Lane 1 : Human spinal cord tissue lysate - total protein (ab29188)

Lane 2 : Human colon tissue lysate - total protein (ab30051)

Lane 3 : Brain Frontal Lobe (Human)Tissue Lysate - Alzheimer

Lane 4 : Human Plasma Total Protein Lysate

Lysates/proteins at 10 µg per lane.

Secondary

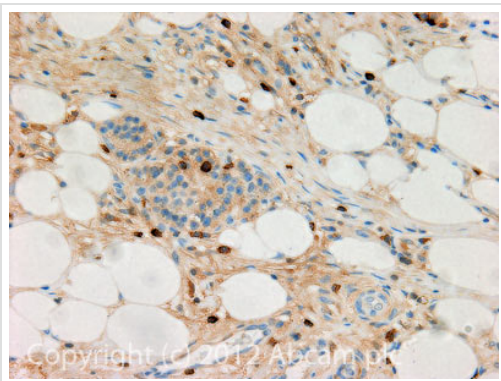
All lanes : Goat Anti-Rabbit IgG H&L (HRP) preadsorbed (ab97080) at 1/5000 dilution

Predicted band size: 48 kDa

Observed band size: 60 kDa

Additional bands at: 83 kDa. We are unsure as to the identity of these extra bands.

alpha 1 Antichymotrypsin contains a number of potential glycosylation sites (SwissProt) which may explain its migration at a higher molecular weight than predicted.



Immunohistochemistry (Formalin/PFA-fixed paraffin-embedded sections) - Anti-alpha 1 Antichymotrypsin antibody (ab107362)

IHC image of alpha 1 Antichymotrypsin staining in Human pancreas adenocarcinoma formalin fixed paraffin embedded tissue section, performed on a Leica Bond™ system using the standard protocol F. The section was pre-treated using heat mediated antigen retrieval with sodium citrate buffer (pH6, epitope retrieval solution 1) for 20 mins. The section was then incubated with ab107362, 1µg/ml, for 15 mins at room temperature and detected using an HRP conjugated compact polymer system. DAB was used as the chromogen. The section was then counterstained with haematoxylin and mounted with DPX.

For other IHC staining systems (automated and non-automated) customers should optimize variable parameters such as antigen retrieval conditions, primary antibody concentration and antibody incubation times.

Please note: All products are "FOR RESEARCH USE ONLY AND ARE NOT INTENDED FOR DIAGNOSTIC OR THERAPEUTIC USE"

Our Abpromise to you: Quality guaranteed and expert technical support

- Replacement or refund for products not performing as stated on the datasheet
- Valid for 12 months from date of delivery
- Response to your inquiry within 24 hours
- We provide support in Chinese, English, French, German, Japanese and Spanish
- Extensive multi-media technical resources to help you
- We investigate all quality concerns to ensure our products perform to the highest standards

If the product does not perform as described on this datasheet, we will offer a refund or replacement. For full details of the Abpromise, please visit <http://www.abcam.cn/abpromise> or contact our technical team.

Terms and conditions

- Guarantee only valid for products bought direct from Abcam or one of our authorized distributors