


Product datasheet

Anti-RP2 antibody ab98353

2 图像

概述

产品名称	Anti-RP2抗体
描述	兔多克隆抗体to RP2
经测试应用	适用于: IHC-P, WB
种属反应性	与反应: Human 预测可用于: Mouse, Rat, Rabbit, Horse, Guinea pig, Cow, Cat, Dog 
免疫原	Synthetic peptide corresponding to a region within internal amino acids 300-349 of Human RP2 (NP_008846). Run BLAST with ExPASy Run BLAST with NCBI
阳性对照	human Fetal muscle lysate

性能

形式	Liquid
存放说明	Shipped at 4°C. Upon delivery aliquot and store at -20°C. Avoid repeated freeze / thaw cycles.
存储溶液	Preservative: None Constituents: 2% Sucrose, PBS
纯度	Immunogen affinity purified
克隆	多克隆
同种型	IgG

应用

Our [Abpromise guarantee](#) covers the use of **ab98353** in the following tested applications.

The application notes include recommended starting dilutions; optimal dilutions/concentrations should be determined by the end user.

应用	Ab评论	说明
IHC-P		Use a concentration of 5 µg/ml.

应用	Ab评论	说明
WB		Use a concentration of 1 µg/ml. Predicted molecular weight: 40 kDa. Good results were obtained when blocked with 5% non-fat dry milk in 0.05% PBS-T.

靶标

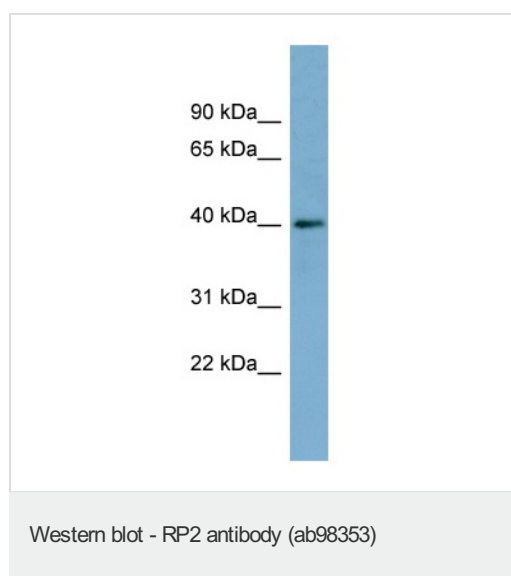
相关性

Function: Acts as a GTPase-activating protein (GAP) involved in trafficking between the Golgi and the ciliary membrane. Involved in localization of proteins, such as NPHP3, to the cilium membrane by inducing hydrolysis of GTP ARL3, leading to the release of UNC119 (or UNC119B). Acts as a GTPase-activating protein (GAP) for tubulin in concert with tubulin-specific chaperone C, but does not enhance tubulin heterodimerization. Acts as guanine nucleotide dissociation inhibitor towards ADP-ribosylation factor-like proteins. Tissue specificity: Ubiquitous. Expressed in the rod and cone photoreceptors, extending from the tips of the outer segment (OS) through the inner segment (IS) and outer nuclear layer (ONL) and into the synaptic terminals of the outer plexiform layer (ONL). Also detected in the bipolar, horizontal and amacrine cells in the inner nuclear layer (INL), extending to the inner plexiform layer (IPL) and through the ganglion cell layer (GCL) and into the nerve fiber layer (NFL) (at protein level). Disease: Retinitis pigmentosa 2 Similarity: Belongs to the TBCC family. Contains 1 C-CAP/cofactor C-like domain. PTM: Myristoylated on Gly-2; which may be required for membrane targeting. Palmitoylated on Cys-3; which may be required for plasma membrane targeting (Probable). Mutation of Cys-3 targets the protein to internal membranes.

细胞定位

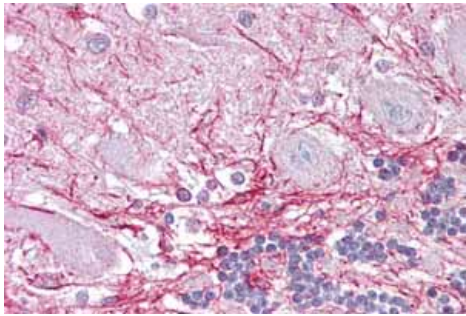
Cell membrane; Lipid-anchor; Cytoplasmic side

图片



Anti-RP2 antibody (ab98353) at 1 µg/ml +
Human fetal muscle lysate at 10 µg

Predicted band size : 40 kDa
Gel concentration: 12%



Immunohistochemistry (Formalin/PFA-fixed paraffin-embedded sections) analysis of human brain, cerebellum tissue labelling RP2 with ab98353 at 5µg/ml.

Immunohistochemistry (Formalin/PFA-fixed paraffin-embedded sections)-Anti-RP2 antibody(ab98353)

Please note: All products are "FOR RESEARCH USE ONLY AND ARE NOT INTENDED FOR DIAGNOSTIC OR THERAPEUTIC USE"

Our Abpromise to you: Quality guaranteed and expert technical support

- Replacement or refund for products not performing as stated on the datasheet
- Valid for 12 months from date of delivery
- Response to your inquiry within 24 hours
- We provide support in Chinese, English, French, German, Japanese and Spanish
- Extensive multi-media technical resources to help you
- We investigate all quality concerns to ensure our products perform to the highest standards

If the product does not perform as described on this datasheet, we will offer a refund or replacement. For full details of the Abpromise, please visit <http://www.abcam.cn/abpromise> or contact our technical team.

Terms and conditions

- Guarantee only valid for products bought direct from Abcam or one of our authorized distributors