


Product datasheet

Anti-KSR1 antibody ab98204

2 图像

概述

产品名称	Anti-KSR1抗体
描述	兔多克隆抗体to KSR1
宿主	Rabbit
经测试应用	适用于: WB
种属反应性	与反应: Mouse 预测可用于: Dog, Human 
免疫原	Synthetic peptide conjugated to KLH derived from within residues 500 - 600 of Human KSR1. 参阅Abcam的专有抗源政策
阳性对照	This antibody gave a positive signal in Mouse brain tissue lysate.

性能

形式	Liquid
存放说明	Shipped at 4°C. Store at +4°C short term (1-2 weeks). Upon delivery aliquot. Store at -20°C or -80°C. Avoid freeze / thaw cycle.
存储溶液	Preservative: 0.02% Sodium Azide Constituents: 1% BSA, PBS, pH 7.4
纯度	Immunogen affinity purified
克隆	多克隆
同种型	IgG

应用

Our [Abpromise guarantee](#) covers the use of **ab98204** in the following tested applications.

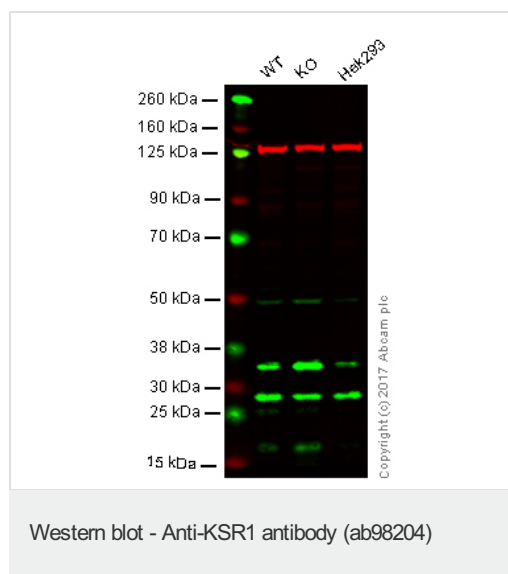
The application notes include recommended starting dilutions; optimal dilutions/concentrations should be determined by the end user.

应用	Ab评论	说明
WB		Use a concentration of 1 µg/ml. Detects a band of approximately 105 kDa (predicted molecular weight: 97 kDa).

## 靶标

<b>功能</b>	Location-regulated scaffolding protein connecting MEK to RAF. Promotes MEK and RAF phosphorylation and activity through assembly of an activated signaling complex. By itself, it has no demonstrated kinase activity.
<b>序列相似性</b>	Belongs to the protein kinase superfamily. TKL Ser/Thr protein kinase family. Contains 1 phorbol-ester/DAG-type zinc finger. Contains 1 protein kinase domain.
<b>翻译后修饰</b>	Phosphorylated on Ser-309 and, to a higher extent, on Ser-404 by MARK3. Dephosphorylated on Ser-404 by PPP2CA. In resting cells, phosphorylated KSR1 is cytoplasmic and in stimulated cells, dephosphorylated KSR1 is membrane-associated.
<b>细胞定位</b>	Cytoplasm. Membrane. In unstimulated cells, where the phosphorylated form is bound to a 14-3-3 protein, sequestration in the cytoplasm occurs. Following growth factor treatment, the protein is free for membrane translocation, and it moves from the cytoplasm to the cell periphery.

## 图片



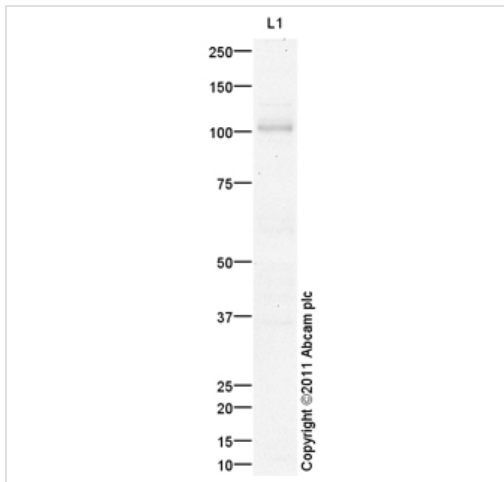
**Lane 1:** Wild type HAP1 whole cell lysate (40 µg)

**Lane 2:** KSR1 knockout HAP1 whole cell lysate (40 µg)

**Lane 3:** Hek293 whole cell lysate (40 µg)

**Lanes 1 - 3:** Merged signal (red and green). Green - ab98204 observed at 97 kDa. Red - loading control, ab18058, observed at 130 kDa.

ab98204 was shown not to specifically react with KSR1 when KSR1 knockout samples were used. Wild-type and KSR1 knockout samples were subjected to SDS-PAGE. Ab98204 and ab18058 (Mouse anti Vinculin loading control) were incubated overnight at 4°C at 2 µg/mL and 1/10000 dilution respectively. Blots were developed with Goat anti-Rabbit IgG H&L (IRDye® 800CW) preabsorbed ab216773 and Goat anti-Mouse IgG H&L (IRDye® 680RD) preabsorbed ab216776 secondary antibodies at 1/10000 dilution for 1 hour at room temperature before imaging.



Western blot - KSR1 antibody (ab98204)

Anti-KSR1 antibody (ab98204) at 1 µg/ml +  
Brain (Mouse) Tissue Lysate at 10 µg

#### Secondary

Goat Anti-Rabbit IgG H&L (HRP) preadsorbed  
(ab97080) at 1/5000 dilution

Developed using the ECL technique.

Performed under reducing conditions.

**Predicted band size:** 97 kDa

**Observed band size:** 105 kDa

**Exposure time:** 8 minutes

**Please note:** All products are "FOR RESEARCH USE ONLY AND ARE NOT INTENDED FOR DIAGNOSTIC OR THERAPEUTIC USE"

#### Our Abpromise to you: Quality guaranteed and expert technical support

- Replacement or refund for products not performing as stated on the datasheet
- Valid for 12 months from date of delivery
- Response to your inquiry within 24 hours
- We provide support in Chinese, English, French, German, Japanese and Spanish
- Extensive multi-media technical resources to help you
- We investigate all quality concerns to ensure our products perform to the highest standards

If the product does not perform as described on this datasheet, we will offer a refund or replacement. For full details of the Abpromise, please visit <http://www.abcam.cn/abpromise> or contact our technical team.

#### Terms and conditions

- Guarantee only valid for products bought direct from Abcam or one of our authorized distributors