

Product datasheet

Anti-CD45 antibody [HI30] (PE/Cy5®) ab95575

1 图像

概述

产品名称	Anti-CD45抗体[HI30] (PE/Cy5®)
描述	小鼠单克隆抗体[HI30] to CD45 (PE/Cy5®)
宿主	Mouse
偶联物	PE/Cy5®. Ex: 496nm, Em: 670nm
经测试应用	适用于: Flow Cyt
种属反应性	与反应: Human
免疫原	Full length Human CD45 protein.
阳性对照	Human peripheral blood leukocytes

性能

形式	Liquid
存放说明	Shipped at 4°C. Store at +4°C.
存储溶液	Preservative: 0.09% Sodium Azide Constituents: 0.2% BSA, PBS, 150mM Sodium chloride, pH 7.2
纯度	Protein G purified
克隆	单克隆
克隆编号	HI30
同种型	IgG1
轻链类型	kappa

应用

Our [Abpromise guarantee](#) covers the use of **ab95575** in the following tested applications.

The application notes include recommended starting dilutions; optimal dilutions/concentrations should be determined by the end user.

应用	Ab评论	说明
----	------	----

应用	Ab评论	说明
Flow Cyt		Use 5µl for 10 ⁶ cells. ab67435 - Mouse monoclonal IgG1, is suitable for use as an isotype control with this antibody.

靶标

功能

Protein tyrosine-protein phosphatase required for T-cell activation through the antigen receptor. Acts as a positive regulator of T-cell coactivation upon binding to DPP4. The first PTPase domain has enzymatic activity, while the second one seems to affect the substrate specificity of the first one. Upon T-cell activation, recruits and dephosphorylates SKAP1 and FYN.

疾病相关

Defects in PTPRC are a cause of severe combined immunodeficiency autosomal recessive T-cell-negative/B-cell-positive/NK-cell-positive (T(-)B(+)NK(+)) SCID [MIM:608971]. A form of severe combined immunodeficiency (SCID), a genetically and clinically heterogeneous group of rare congenital disorders characterized by impairment of both humoral and cell-mediated immunity, leukopenia, and low or absent antibody levels. Patients present in infancy recurrent, persistent infections by opportunistic organisms. The common characteristic of all types of SCID is absence of T-cell-mediated cellular immunity due to a defect in T-cell development. Genetic variations in PTPRC are involved in multiple sclerosis susceptibility (MS) [MIM:126200]. MS is a neurodegenerative disorder characterized by the gradual accumulation of focal plaques of demyelination particularly in the periventricular areas of the brain. Peripheral nerves are not affected. Onset usually in third or fourth decade with intermittent progression over an extended period. The cause is still uncertain.

序列相似性

Belongs to the protein-tyrosine phosphatase family. Receptor class 1/6 subfamily. Contains 2 fibronectin type-III domains. Contains 2 tyrosine-protein phosphatase domains.

结构域

The first PTPase domain interacts with SKAP1.

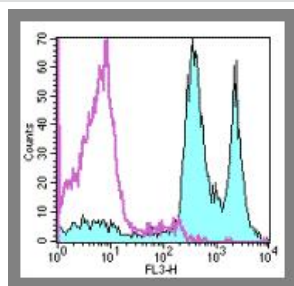
翻译后修饰

Heavily N- and O-glycosylated.

细胞定位

Membrane. Membrane raft. Colocalized with DPP4 in membrane rafts.

图片



Flow Cytometry - CD45 antibody [HI30] (PE/Cy5®)
(ab95575)

ab95575, at 20 µl (0.015 µg)/per test, staining normal Human peripheral blood cells by flow cytometry (filled histogram). The open histogram shows staining with PE-Cy5 Mouse IgG1 isotype control. Total viable cells were used for the analysis.

Our Abpromise to you: Quality guaranteed and expert technical support

- Replacement or refund for products not performing as stated on the datasheet
- Valid for 12 months from date of delivery
- Response to your inquiry within 24 hours

- We provide support in Chinese, English, French, German, Japanese and Spanish
- Extensive multi-media technical resources to help you
- We investigate all quality concerns to ensure our products perform to the highest standards

If the product does not perform as described on this datasheet, we will offer a refund or replacement. For full details of the Abpromise, please visit <http://www.abcam.cn/abpromise> or contact our technical team.

Terms and conditions

- Guarantee only valid for products bought direct from Abcam or one of our authorized distributors