

Product datasheet

Anti-CAMK1D antibody ab95178

2 图像

概述

产品名称	Anti-CAMK1D抗体
描述	兔多克隆抗体to CAMK1D
经测试应用	适用于: WB, IP
种属反应性	与反应: Human 预测可用于: Chimpanzee, Rhesus monkey, Gorilla, Orangutan 
免疫原	Immunogen corresponds to a region between residue 335 and 385 (VSSSLSLASQ KDCLAPSTLC SFISSSSGVS GVGAERRPRP TTVTAVHSGS K), of Human CAMKD1 (NP_705718.1) Run BLAST with ExPASy Run BLAST with NCBI
阳性对照	HeLa and 293T whole cell lysates

性能

形式	Liquid
存放说明	Shipped at 4°C. Upon delivery aliquot and store at -20°C. Avoid freeze / thaw cycles.
存储溶液	Preservative: 0.09% Sodium Azide Constituents: Tris citrate/phosphate, pH 7-8
纯度	Immunogen affinity purified
纯化说明	ab95178 was affinity purified using an epitope specific to CAMK1D immobilized on solid support.
克隆	多克隆
同种型	IgG

应用

Our [Abpromise guarantee](#) covers the use of **ab95178** in the following tested applications.

The application notes include recommended starting dilutions; optimal dilutions/concentrations should be determined by the end user.

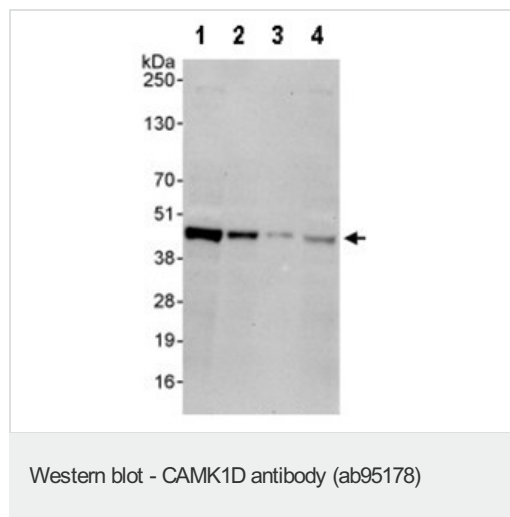
应用	Ab评论	说明
WB		1/2000 - 1/10000. Predicted molecular weight: 43 kDa.

应用	Ab评论	说明
IP		Use at 2-5 µg/mg of lysate.

靶标

功能	Calcium/calmodulin-dependent protein kinase belonging to a proposed calcium-triggered signaling cascade. May regulate calcium-mediated granulocyte function. May play a role in apoptosis of erythroleukemia cells. Activates MAP kinase MAPK3 (By similarity). In vitro, phosphorylates transcription factor CREM isoform Beta and probably CREB1.
组织特异性	Broadly expressed. Highly and mostly expressed in polymorphonuclear leukocytes (neutrophilic and eosinophilic granulocytes) while little or no expression is observed in monocytes and lymphocytes.
序列相似性	Belongs to the protein kinase superfamily. CAMK Ser/Thr protein kinase family. CaMK subfamily. Contains 1 protein kinase domain.
结构域	The autoinhibitory domain overlaps with the calmodulin binding region and interacts in the inactive folded state with the catalytic domain as a pseudosubstrate.
细胞定位	Cytoplasm. Nucleus. Predominantly cytoplasmic (Probable). Also nuclear upon activation.

图片



All lanes : Anti-CAMK1D antibody (ab95178)
at 0.1 µg/ml

Lane 1 : HeLa whole cell lysate at 50 µg

Lane 2 : HeLa whole cell lysate at 15 µg

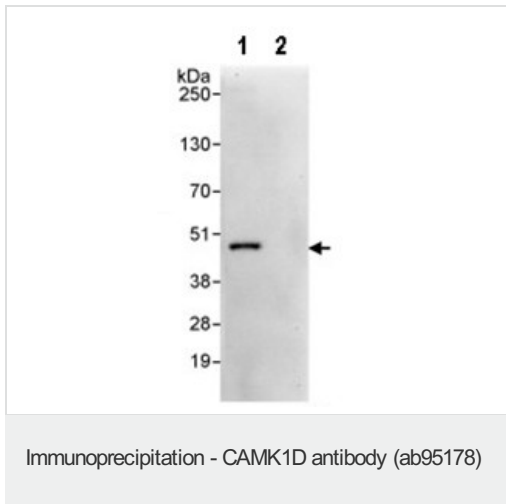
Lane 3 : HeLa whole cell lysate at 5 µg

Lane 4 : 293T whole cell lysate at 50 µg

Developed using the ECL technique

Predicted band size : 43 kDa

Exposure time : 30 seconds



Lane 1: 3 μ g/ml ab95178 were used to immunoprecipitate CAMK1D from 1mg HeLa whole cell lysate. 20% IP was loaded and probed with 1 μ g/ml ab95178.

Lane 2: same, using a control IgG.

Detection: chemiluminescence with exposure time of 30 seconds.

Please note: All products are "FOR RESEARCH USE ONLY AND ARE NOT INTENDED FOR DIAGNOSTIC OR THERAPEUTIC USE"

Our Abpromise to you: Quality guaranteed and expert technical support

- Replacement or refund for products not performing as stated on the datasheet
- Valid for 12 months from date of delivery
- Response to your inquiry within 24 hours
- We provide support in Chinese, English, French, German, Japanese and Spanish
- Extensive multi-media technical resources to help you
- We investigate all quality concerns to ensure our products perform to the highest standards

If the product does not perform as described on this datasheet, we will offer a refund or replacement. For full details of the Abpromise, please visit <http://www.abcam.cn/abpromise> or contact our technical team.

Terms and conditions

- Guarantee only valid for products bought direct from Abcam or one of our authorized distributors