

Product datasheet

Anti-SDS antibody ab94947

1 图像

概述

产品名称	Anti-SDS抗体
描述	兔多克隆抗体to SDS
经测试应用	适用于: WB
种属反应性	与反应: Human
免疫原	Synthetic peptide selected from the N terminal region of Human SDS conjugated to KLH (UniProt ID: P20132).
阳性对照	K562 cell line lysates

性能

形式	Liquid
存放说明	Shipped at 4°C. Upon delivery aliquot and store at -20°C. Avoid repeated freeze / thaw cycles.
存储溶液	Preservative: 0.09% Sodium Azide Constituents: PBS
纯度	Immunogen affinity purified
纯化说明	ab94947 was purified through a Protein A column, followed by peptide affinity purification.
克隆	多克隆
同种型	IgG

应用

Our [Abpromise guarantee](#) covers the use of **ab94947** in the following tested applications.

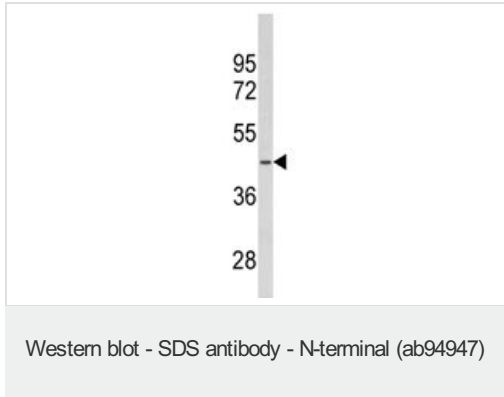
The application notes include recommended starting dilutions; optimal dilutions/concentrations should be determined by the end user.

应用	Ab评论	说明
WB		1/100 - 1/500. Predicted molecular weight: 35 kDa.

靶标

通路	Carbohydrate biosynthesis; gluconeogenesis.
序列相似性	Belongs to the serine/threonine dehydratase family.
细胞定位	Cytoplasm.

图片



Anti-SDS antibody (ab94947) at 1/100 dilution
+ K562 cell line lysates at 35 µg

Predicted band size : 35 kDa

Please note: All products are "FOR RESEARCH USE ONLY AND ARE NOT INTENDED FOR DIAGNOSTIC OR THERAPEUTIC USE"

Our Abpromise to you: Quality guaranteed and expert technical support

- Replacement or refund for products not performing as stated on the datasheet
- Valid for 12 months from date of delivery
- Response to your inquiry within 24 hours
- We provide support in Chinese, English, French, German, Japanese and Spanish
- Extensive multi-media technical resources to help you
- We investigate all quality concerns to ensure our products perform to the highest standards

If the product does not perform as described on this datasheet, we will offer a refund or replacement. For full details of the Abpromise, please visit <http://www.abcam.cn/abpromise> or contact our technical team.

Terms and conditions

- Guarantee only valid for products bought direct from Abcam or one of our authorized distributors