


Product datasheet

Anti-Entactin antibody ab92694

1 图像

概述

产品名称	Anti-Entactin抗体
描述	兔多克隆抗体to Entactin
宿主	Rabbit
经测试应用	适用于: WB, ELISA
种属反应性	与反应: Human 预测可用于: Mouse, Rat 
免疫原	Synthetic peptide derived from an internal region of Human Entactin.
阳性对照	K562 cell lysate

性能

形式	Liquid
存放说明	Shipped at 4°C. Upon delivery aliquot and store at -20°C. Avoid repeated freeze / thaw cycles.
存储溶液	Preservative: 0.02% Sodium Azide Constituents: 50% Glycerol, PBS (without Mg ²⁺ and Ca ²⁺), 150mM Sodium chloride, pH 7.4
纯度	Immunogen affinity purified
克隆	多克隆
同种型	IgG

应用

Our [Abpromise guarantee](#) covers the use of **ab92694** in the following tested applications.

The application notes include recommended starting dilutions; optimal dilutions/concentrations should be determined by the end user.

应用	Ab评论	说明
WB		
ELISA		
应用说明	ELISA: 1/20000.	

WB: 1/500 - 1/1000. Predicted molecular weight: 136 kDa.

Not yet tested in other applications.

Optimal dilutions/concentrations should be determined by the end user.

靶标

功能

Sulfated glycoprotein widely distributed in basement membranes and tightly associated with laminin. Also binds to collagen IV and perlecan. It probably has a role in cell-extracellular matrix interactions.

序列相似性

Contains 6 EGF-like domains.
Contains 4 LDL-receptor class B repeats.
Contains 1 NIDO domain.
Contains 1 nidogen G2 beta-barrel domain.
Contains 1 thyroglobulin type-1 domain.

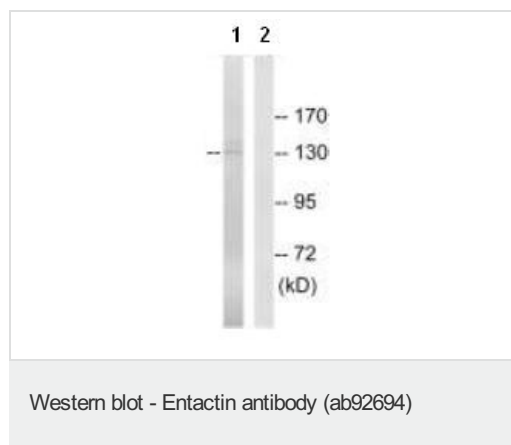
翻译后修饰

N- and O-glycosylated.

细胞定位

Secreted > extracellular space > extracellular matrix > basement membrane.

图片



All lanes : Anti-Entactin antibody (ab92694)
at 1/500 dilution

Lane 1 : extracts from K562 cells

Lane 2 : extracts from K562 cells with
immunizing peptide at 10 µg

Lysates/proteins at 30 µg per lane.

Predicted band size: 136 kDa

Please note: All products are "FOR RESEARCH USE ONLY AND ARE NOT INTENDED FOR DIAGNOSTIC OR THERAPEUTIC USE"

Our Abpromise to you: Quality guaranteed and expert technical support

- Replacement or refund for products not performing as stated on the datasheet
- Valid for 12 months from date of delivery
- Response to your inquiry within 24 hours
- We provide support in Chinese, English, French, German, Japanese and Spanish
- Extensive multi-media technical resources to help you
- We investigate all quality concerns to ensure our products perform to the highest standards

If the product does not perform as described on this datasheet, we will offer a refund or replacement. For full details of the Abpromise, please visit <http://www.abcam.cn/abpromise> or contact our technical team.

Terms and conditions

- Guarantee only valid for products bought direct from Abcam or one of our authorized distributors