

Product datasheet

Anti-Apolipoprotein M antibody ab91416

1 图像

概述

产品名称	Anti-Apolipoprotein M抗体
描述	兔多克隆抗体to Apolipoprotein M
经测试应用	适用于: WB, ELISA
种属反应性	与反应: Human
免疫原	A KLH conjugated synthetic peptide selected from the Center region of Human Apolipoprotein M.
阳性对照	K562 cell line lysates

性能

形式	Liquid
存放说明	Shipped at 4°C. Upon delivery aliquot and store at -20°C. Avoid repeated freeze / thaw cycles.
存储溶液	Preservative: 0.09% Sodium Azide Constituents: PBS
纯度	Immunogen affinity purified
纯化说明	ab91416 is purified through a protein A column, followed by peptide affinity purification.
克隆	多克隆
同种型	IgG

应用

Our [Abpromise guarantee](#) covers the use of **ab91416** in the following tested applications.

The application notes include recommended starting dilutions; optimal dilutions/concentrations should be determined by the end user.

应用	Ab评论	说明
----	------	----

WB

ELISA

应用说明	ELISA: 1/1000. WB: 1/100 - 1/500. Predicted molecular weight: 21 kDa.
------	--

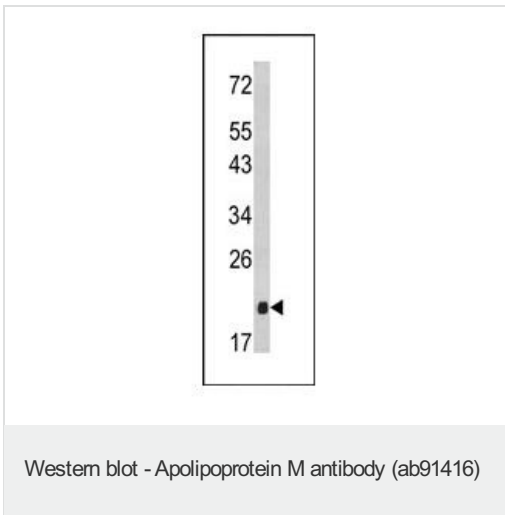
Not yet tested in other applications.

Optimal dilutions/concentrations should be determined by the end user.

靶标

功能	Probably involved in lipid transport. Can bind sphingosine-1-phosphate, myristic acid, palmitic acid and stearic acid, retinol, all-trans-retinoic acid and 9-cis-retinoic acid.
组织特异性	Plasma protein. Expressed in liver and kidney.
序列相似性	Belongs to the calycin superfamily. Lipocalin family. Highly divergent.
细胞定位	Secreted. Present in high density lipoprotein (HDL) and to a lesser extent in triglyceride-rich lipoproteins (TGRLP) and low density lipoproteins.

Anti-Apolipoprotein M antibody 图像



Anti-Apolipoprotein M antibody (ab91416) at
1/100 dilution + K562 cell line lysates at 35 µg

Predicted band size : 21 kDa

Please note: All products are "FOR RESEARCH USE ONLY AND ARE NOT INTENDED FOR DIAGNOSTIC OR THERAPEUTIC USE"

Our Abpromise to you: Quality guaranteed and expert technical support

- Replacement or refund for products not performing as stated on the datasheet
- Valid for 12 months from date of delivery
- Response to your inquiry within 24 hours
- We provide support in Chinese, English, French, German, Japanese and Spanish
- Extensive multi-media technical resources to help you
- We investigate all quality concerns to ensure our products perform to the highest standards

If the product does not perform as described on this datasheet, we will offer a refund or replacement. For full details of the Abpromise, please visit <http://www.abcam.cn/abpromise> or contact our technical team.

Terms and conditions

- Guarantee only valid for products bought direct from Abcam or one of our authorized distributors