

## Product datasheet

# Anti-CoREST antibody ab90962

### 1 图像

#### 概述

<b>产品名称</b>	Anti-CoREST抗体
<b>描述</b>	兔多克隆抗体to CoREST
<b>宿主</b>	Rabbit
<b>经测试应用</b>	<b>适用于:</b> WB
<b>种属反应性</b>	<b>与反应:</b> Human <b>预测可用于:</b> Mouse, Horse, Guinea pig, Cow, Cat, Dog
<b>免疫原</b>	Synthetic peptide corresponding to a region within internal sequence amino acids 432-481 (EVLQEWAEAH GKEETNGPSN QKPVKSPDNS IKMPEEEDDA PVL DVRYASA) of Human CoREST (NP_055971). <a href="#">Run BLAST with ExPASy</a> <a href="#">Run BLAST with NCBI</a>
<b>阳性对照</b>	HT1080 cell lysate

#### 性能

<b>形式</b>	Liquid
<b>存放说明</b>	Shipped at 4°C. Upon delivery aliquot and store at -20°C. Avoid repeated freeze / thaw cycles.
<b>存储溶液</b>	Preservative: None Constituents: 2% Sucrose, PBS
<b>纯度</b>	Immunogen affinity purified
<b>克隆</b>	多克隆
<b>同种型</b>	IgG

#### 应用

Our [Abpromise guarantee](#) covers the use of **ab90962** in the following tested applications.

The application notes include recommended starting dilutions; optimal dilutions/concentrations should be determined by the end user.

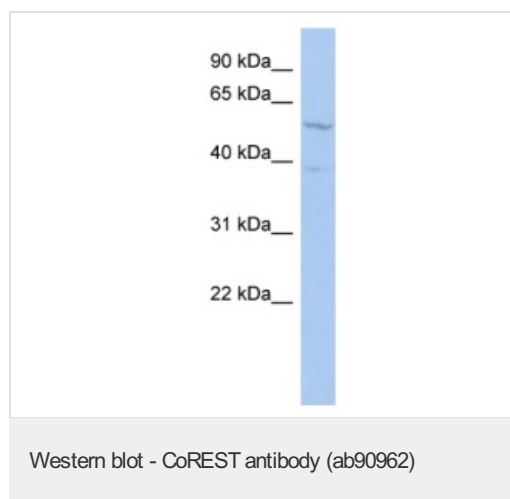
应用	Ab评论	说明

应用	Ab评论	说明
WB		Use a concentration of 1 µg/ml. Predicted molecular weight: 53 kDa. Good results were obtained when blocked with 5% non-fat dry milk in 0.05% PBS-T.

## 靶标

<b>功能</b>	Essential component of the BHC complex, a corepressor complex that represses transcription of neuron-specific genes in non-neuronal cells. The BHC complex is recruited at RE1/NRSE sites by REST and acts by deacetylating and demethylating specific sites on histones, thereby acting as a chromatin modifier. In the BHC complex, it serves as a molecular beacon for the recruitment of molecular machinery, including MeCP2 and SUV39H1, that imposes silencing across a chromosomal interval. Plays a central role in demethylation of Lys-4 of histone H3 by promoting demethylase activity of KDM1A on core histones and nucleosomal substrates. It also protects KDM1A from the proteasome.
<b>组织特异性</b>	Ubiquitously expressed.
<b>序列相似性</b>	Belongs to the CoREST family. Contains 1 ELM2 domain. Contains 2 SANT domains.
<b>结构域</b>	The SANT domains may bridge the nucleosomal substrates and the demethylase KDM1A.
<b>翻译后修饰</b>	Phosphorylated by HSV-1 protein kinases in case of infection.
<b>细胞定位</b>	Nucleus. Upon infection by HSV-1, it is partially translocated into the cytoplasm in an HSV-1-dependent manner.

## 图片



Anti-CoREST antibody (ab90962) at 1 µg/ml  
(in 5% skim milk / PBS buffer) + HT1080 cell  
lysate at 10 µg

### Secondary

HRP conjugated anti-Rabbit IgG at 1/50000  
dilution

**Predicted band size: 53 kDa**

Gel concentration: 12%

**Please note:** All products are "FOR RESEARCH USE ONLY AND ARE NOT INTENDED FOR DIAGNOSTIC OR THERAPEUTIC USE"

## **Our Abpromise to you: Quality guaranteed and expert technical support**

---

- Replacement or refund for products not performing as stated on the datasheet
- Valid for 12 months from date of delivery
- Response to your inquiry within 24 hours
  
- We provide support in Chinese, English, French, German, Japanese and Spanish
- Extensive multi-media technical resources to help you
- We investigate all quality concerns to ensure our products perform to the highest standards

If the product does not perform as described on this datasheet, we will offer a refund or replacement. For full details of the Abpromise, please visit <http://www.abcam.cn/abpromise> or contact our technical team.

## **Terms and conditions**

---

- Guarantee only valid for products bought direct from Abcam or one of our authorized distributors