

Product datasheet

Anti-Rsk 2 / MAPKAP Kinase 1b antibody ab90526

2 图像

概述

产品名称	Anti-Rsk 2 / MAPKAP Kinase 1b抗体
描述	兔多克隆抗体to Rsk 2 / MAPKAP Kinase 1b
经测试应用	适用于: IHC-P, WB 不适用于: IP
种属反应性	与反应: Mouse, Human 预测可用于: Guinea pig, Cow, Dog, Pig, Chimpanzee, Rhesus monkey, Orangutan ▲
免疫原	Synthetic peptide, corresponding to a region within the N terminal amino acids 1-50 of Human Rsk 2/ MAPKAP Kinase 1b (NP_004577.1)
阳性对照	HeLa, 293T and mouse NIH3T3 whole cell lysate.

性能

形式	Liquid
存放说明	Shipped at 4°C. Upon delivery aliquot and store at -20°C. Avoid freeze / thaw cycles.
存储溶液	Preservative: 0.09% Sodium Azide Constituents: Tris citrate/phosphate, pH 7-8
纯度	Immunogen affinity purified
克隆	多克隆
同种型	IgG

应用

Our [Abpromise guarantee](#) covers the use of **ab90526** in the following tested applications.

The application notes include recommended starting dilutions; optimal dilutions/concentrations should be determined by the end user.

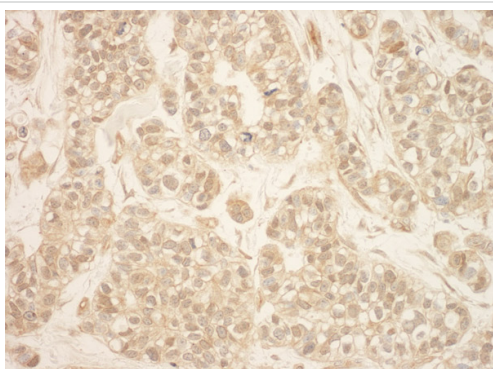
应用	Ab评论	说明
IHC-P		1/500 - 1/2000. Perform heat mediated antigen retrieval with citrate buffer pH 6 before commencing with IHC staining protocol.
WB		1/2000 - 1/10000. Predicted molecular weight: 84 kDa.

应用说明 Is unsuitable for IP.

靶标

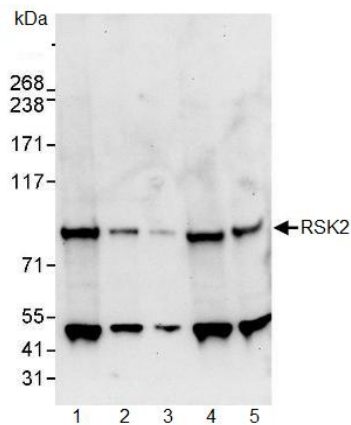
功能	Serine/threonine kinase that may play a role in mediating the growth-factor and stress induced activation of the transcription factor CREB.
组织特异性	Expressed in many tissues, highest levels in skeletal muscle.
疾病相关	Defects in RPS6KA3 are the cause of Coffin-Lowry syndrome (CLS) [MIM:303600]; an X-linked dominant disorder characterized by severe mental retardation with facial and digital dysmorphisms, and progressive skeletal deformations.
序列相似性	Belongs to the protein kinase superfamily. AGC Ser/Thr protein kinase family. S6 kinase subfamily. Contains 1 AGC-kinase C-terminal domain. Contains 2 protein kinase domains.
翻译后修饰	Autophosphorylated on Ser-386, as part of the activation process. Ser-227 phosphorylation promotes Ser-386 phosphorylation and leads to basal activation. Full activation by growth factors requires additional phosphorylation on Ser-369.

Anti-Rsk 2 / MAPKAP Kinase 1b antibody 图像



Immunohistochemistry (Formalin/PFA-fixed paraffin-embedded sections) analysis of human breast carcinoma tissue labelling Rsk 2 / MAPKAP Kinase 1b with ab90526 at 1/1000 (1 µg/ml). Detection: DAB.

Immunohistochemistry (Formalin/PFA-fixed paraffin-embedded sections) - Anti-Rsk 2 / MAPKAP Kinase 1b antibody (ab90526)



Western blot - Rsk 2 / MAPKAP Kinase 1b antibody (ab90526)

All lanes : Anti-Rsk 2 / MAPKAP Kinase 1b antibody (ab90526) at 0.4 µg/ml

Lane 1 : whole cell lysate from HeLa cells at 50 µg

Lane 2 : whole cell lysate from HeLa cells at 15 µg

Lane 3 : whole cell lysate from HeLa cells at 5 µg

Lane 4 : whole cell lysate from 293T cells at 50 µg

Lane 5 : whole cell lysate from mouse NIH3T3 cells at 50 µg

Developed using the ECL technique

Predicted band size : 84 kDa

Exposure time : 30 seconds

Please note: All products are "FOR RESEARCH USE ONLY AND ARE NOT INTENDED FOR DIAGNOSTIC OR THERAPEUTIC USE"

Our Abpromise to you: Quality guaranteed and expert technical support

- Replacement or refund for products not performing as stated on the datasheet
- Valid for 12 months from date of delivery
- Response to your inquiry within 24 hours
- We provide support in Chinese, English, French, German, Japanese and Spanish
- Extensive multi-media technical resources to help you
- We investigate all quality concerns to ensure our products perform to the highest standards

If the product does not perform as described on this datasheet, we will offer a refund or replacement. For full details of the Abpromise, please visit <http://www.abcam.cn/abpromise> or contact our technical team.

Terms and conditions

- Guarantee only valid for products bought direct from Abcam or one of our authorized distributors