

Product datasheet

Anti-ID2 antibody [10C3] ab90055

4 图像

概述

产品名称	Anti-ID2抗体[10C3]
描述	小鼠单克隆抗体[10C3] to ID2
经测试应用	适用于: WB, IHC-P, ICC/IF, Flow Cyt
种属反应性	与反应: Human
免疫原	Recombinant full length Human ID2 protein, expressed in <i>E.coli</i> .
阳性对照	IHC-P: Human liver tissue and carcinoma of Human liver tissue ICC/IF: ID2 transfected HeLa cells
常规说明	Dilute in PBS (pH 7.3) before use.

性能

形式	Liquid
存放说明	Shipped at 4°C. Upon delivery aliquot and store at -20°C. Avoid repeated freeze / thaw cycles.
存储溶液	Preservative: 0.02% Sodium Azide Constituents: 50% Glycerol, 1% BSA, PBS (pH 7.3)
纯化说明	Purified from mouse ascites fluids.
克隆	单克隆
克隆编号	10C3
同种型	IgG2b

应用

Our [Abpromise guarantee](#) covers the use of **ab90055** in the following tested applications.

The application notes include recommended starting dilutions; optimal dilutions/concentrations should be determined by the end user.

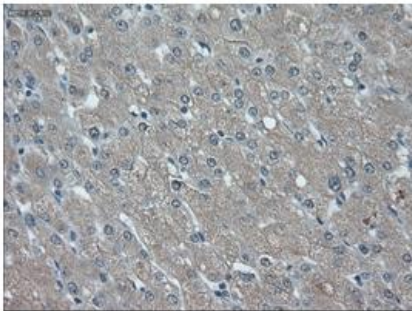
应用	Ab评论	说明
WB		1/500. Predicted molecular weight: 15 kDa.
IHC-P		1/50.

应用	Ab评论	说明
ICC/IF		Use at an assay dependent concentration.
Flow Cyt		Use 1µg for 10 ⁶ cells. ab170192 -Mouse monoclonal IgG2b, is suitable for use as an isotype control with this antibody.

靶标

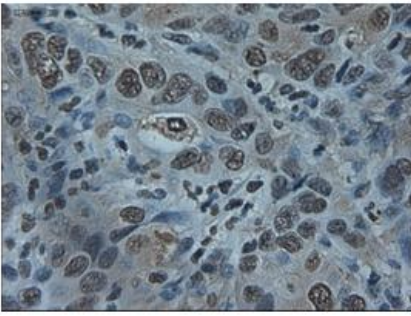
功能	ID (inhibitor of DNA binding) HLH proteins lack a basic DNA-binding domain but are able to form heterodimers with other HLH proteins, thereby inhibiting DNA binding. ID-2 may be an inhibitor of tissue-specific gene expression.
组织特异性	Highly expressed in early fetal tissues, including those of the central nervous system.
序列相似性	Contains 1 basic helix-loop-helix (bHLH) domain.
发展阶段	Found in most early fetal tissues but not in the corresponding mature tissues.
细胞定位	Cytoplasm. Nucleus.

图片



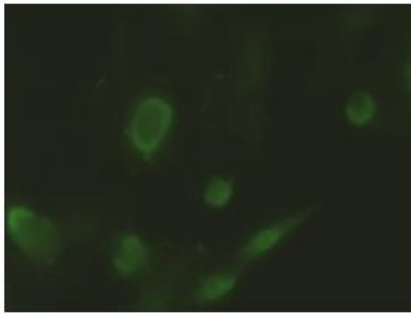
ab90055, at a dilution of 1/50, staining ID2 in paraffin embedded Human liver tissue by Immunohistochemistry.

Immunohistochemistry (Formalin/PFA-fixed paraffin-embedded sections) - ID2 antibody [10C3] (ab90055)



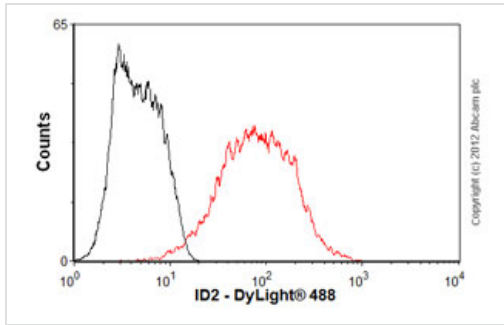
ab90055, at a dilution of 1/50, staining ID2 in paraffin embedded carcinoma of Human liver tissue by Immunohistochemistry.

Immunohistochemistry (Formalin/PFA-fixed paraffin-embedded sections) - ID2 antibody [10C3] (ab90055)



ab90055, staining ID2 in transiently transfected HeLa cells by Immunofluorescence.

Immunocytochemistry/ Immunofluorescence - ID2 antibody [10C3] (ab90055)



Flow Cytometry - Anti-ID2 antibody [10C3]
(ab90055)

Overlay histogram showing SH-SY5Y cells stained with ab90055 (red line). The cells were fixed with 4% paraformaldehyde (10 min) and then permeabilized with 0.1% PBS-Tween for 20 min. The cells were then incubated in 1x PBS / 10% normal goat serum / 0.3M glycine to block non-specific protein-protein interactions. The cells were then incubated with the antibody (ab90055, 1µg/1x10⁶ cells) for 30 min at 22°C. The secondary antibody used was DyLight® 488 goat anti-mouse IgG (H+L) (ab96879) at 1/500 dilution for 30 min at 22°C. Isotype control antibody (black line) was mouse IgG2b [PLPV219] (ab91366, 2µg/1x10⁶ cells) used under the same conditions. Acquisition of >5,000 events was performed. This antibody gave a positive signal in SH-SY5Y cells fixed with 80% methanol (5 min)/permeabilized with 0.1% PBS-Tween for 20 min used under the same conditions.

Please note: All products are "FOR RESEARCH USE ONLY AND ARE NOT INTENDED FOR DIAGNOSTIC OR THERAPEUTIC USE"

Our Abpromise to you: Quality guaranteed and expert technical support

- Replacement or refund for products not performing as stated on the datasheet
- Valid for 12 months from date of delivery
- Response to your inquiry within 24 hours
- We provide support in Chinese, English, French, German, Japanese and Spanish
- Extensive multi-media technical resources to help you
- We investigate all quality concerns to ensure our products perform to the highest standards

If the product does not perform as described on this datasheet, we will offer a refund or replacement. For full details of the Abpromise, please visit <http://www.abcam.cn/abpromise> or contact our technical team.

Terms and conditions

- Guarantee only valid for products bought direct from Abcam or one of our authorized distributors