

Product datasheet

Anti-C4d antibody ab89537

1 图像

概述

产品名称	Anti-C4d抗体
描述	兔多克隆抗体to C4d
宿主	Rabbit
特异性	This antibody is unique in that it has been shown to detect both the C4 protein at 200kDa as well as the 40kDa C4d protein.
经测试应用	适用于: ICC, Flow Cyt, ELISA, WB
种属反应性	与反应: Mouse
免疫原	KLH conjugated syn-thetic mouse C4 peptide fragment.

性能

形式	Liquid
存放说明	Shipped at 4°C. Upon delivery aliquot and store at -20°C. Avoid repeated freeze / thaw cycles.
存储溶液	Preservative: None Constituents: 50% Glycerol, Whole serum
纯度	Immunogen affinity purified
克隆	多克隆
同种型	IgG

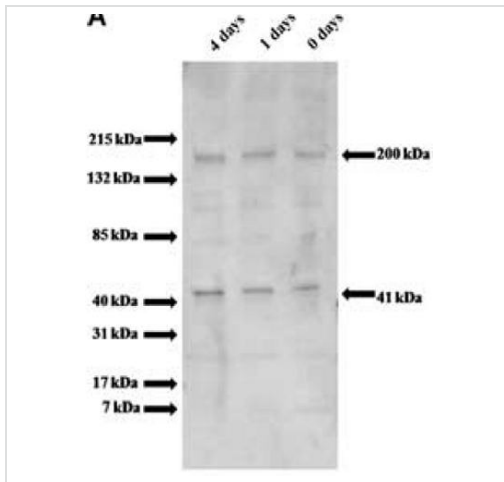
应用

Our [Abpromise guarantee](#) covers the use of **ab89537** in the following tested applications.

The application notes include recommended starting dilutions; optimal dilutions/concentrations should be determined by the end user.

应用	Ab评论	说明
ICC		
Flow Cyt		
ELISA		

应用	Ab评论	说明
WB		
<b>应用说明</b>	<p>ELISA: Use at an assay dependent dilution.            Flow Cyt: Use at an assay dependent dilution.            ICC: Use at an assay dependent dilution.            WB: Use at an assay dependent dilution. Detects a band of approximately 200,41 kDa (predicted molecular weight: 193 kDa).</p> <p>Not yet tested in other applications.            Optimal dilutions/concentrations should be determined by the end user.</p>	
<b>靶标</b>		
<b>功能</b>	<p>C4 plays a central role in the activation of the classical pathway of the complement system. It is processed by activated C1 which removes from the alpha chain the C4a anaphylatoxin. The remaining alpha chain fragment C4b is the major activation product and is an essential subunit of the C3 convertase (C4b2a) and the C5 convertase (C3bC4b2a) enzymes of the classical complement pathway.</p> <p>Derived from proteolytic degradation of complement C4, C4a anaphylatoxin is a mediator of local inflammatory process. It induces the contraction of smooth muscle, increases vascular permeability and causes histamine release from mast cells and basophilic leukocytes.</p>	
<b>疾病相关</b>	<p>Defects in C4A are the cause of complement component 4A deficiency (C4AD) [MIM:120810]. A rare defect of the complement classical pathway associated with the development of autoimmune disorders, mainly systemic lupus with or without associated glomerulonephritis.</p>	
<b>序列相似性</b>	<p>Contains 1 anaphylatoxin-like domain.            Contains 1 NTR domain.</p>	
<b>翻译后修饰</b>	<p>Prior to secretion, the single-chain precursor is enzymatically cleaved to yield the non-identical chains (alpha, beta and gamma). During activation, the alpha chain is cleaved by C1 into C4a and C4b, and C4b stays linked to the beta and gamma chains. Further degradation of C4b by C1 into the inactive fragments C4c and C4d blocks the generation of C3 convertase.</p> <p>N- and O-glycosylated. O-glycosylated with a core 1 or possibly core 8 glycan.</p>	
<b>细胞定位</b>	<p>Secreted.</p>	
<b>图片</b>		



Western blot - C4d antibody (ab89537)

Western blot analysis using ab89537. Serum from a C57BL6 mouse was aged for 0, 1 and 4 days at 37degrees C to allow cleavage of C4 to C4d. Blots reacted with ab89537 yielded both a 200 kDa band as well as a 41 kDa band corresponding to the molecular weight of C4d.

**Please note:** All products are "FOR RESEARCH USE ONLY AND ARE NOT INTENDED FOR DIAGNOSTIC OR THERAPEUTIC USE"

### Our Abpromise to you: Quality guaranteed and expert technical support

- Replacement or refund for products not performing as stated on the datasheet
- Valid for 12 months from date of delivery
- Response to your inquiry within 24 hours
- We provide support in Chinese, English, French, German, Japanese and Spanish
- Extensive multi-media technical resources to help you
- We investigate all quality concerns to ensure our products perform to the highest standards

If the product does not perform as described on this datasheet, we will offer a refund or replacement. For full details of the Abpromise, please visit <http://www.abcam.cn/abpromise> or contact our technical team.

### Terms and conditions

- Guarantee only valid for products bought direct from Abcam or one of our authorized distributors