


Product datasheet

Anti-TLR5 antibody ab89497

1 图像

概述

<b>产品名称</b>	Anti-TLR5抗体
<b>描述</b>	小鼠单克隆抗体to TLR5
<b>经测试应用</b>	<b>适用于:</b> WB, ELISA
<b>种属反应性</b>	<b>与反应:</b> Human <b>预测可用于:</b> Chimpanzee, Cynomolgus monkey, Rhesus monkey, Orangutan 
<b>免疫原</b>	Recombinant fragment: LYSSNFYGLP KVAYIDLQKN HAIIQDQTF KFLEKLQTLD LRDNALTTH FIPSIPDIFL SGNKLVTPK INLTANLIHL SENRLENLDI LYFLLRVP HL, corresponding to amino acids 351-450 of Human TLR5 (NP_003259) with a 26 kDa propriery tag. <a href="#">Run BLAST with ExPASy</a> <a href="#">Run BLAST with NCBI</a>
<b>阳性对照</b>	FHs 173 cell lysate.

性能

<b>形式</b>	Liquid
<b>存放说明</b>	Shipped at 4°C. Upon delivery aliquot and store at -20°C or -80°C. Avoid repeated freeze / thaw cycles.
<b>存储溶液</b>	Preservative: None Constituents: 1X PBS, pH 7.2
<b>纯度</b>	Protein A purified
<b>克隆</b>	单克隆
<b>同种型</b>	IgG2a
<b>轻链类型</b>	kappa

应用

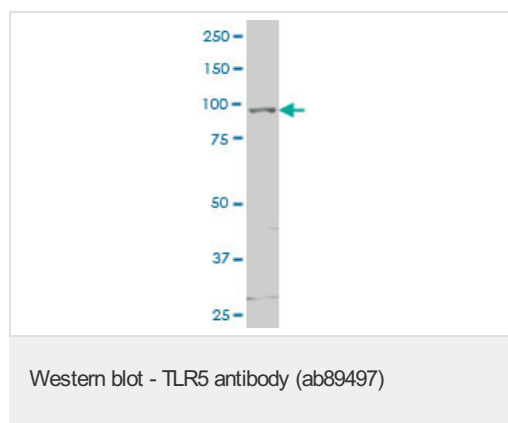
Our [Abpromise guarantee](#) covers the use of **ab89497** in the following tested applications.  
The application notes include recommended starting dilutions; optimal dilutions/concentrations should be determined by the end user.

应用	Ab评论	说明
WB		Use a concentration of 1 - 5 µg/ml. Predicted molecular weight: 97 kDa.
ELISA		Use at an assay dependent dilution.

## 靶标

<b>功能</b>	Participates in the innate immune response to microbial agents. Mediates detection of bacterial flagellins. Acts via MYD88 and TRAF6, leading to NF-kappa-B activation, cytokine secretion and the inflammatory response.
<b>组织特异性</b>	Highly expressed in ovary and in peripheral blood leukocytes, especially in monocytes, less in CD11c+ immature dendritic cells. Also detected in prostate and testis.
<b>疾病相关</b>	Systemic lupus erythematosus 1
<b>序列相似性</b>	Belongs to the Toll-like receptor family. Contains 22 LRR (leucine-rich) repeats. Contains 1 LRRCT domain. Contains 1 TIR domain.
<b>翻译后修饰</b>	Phosphorylated at Ser-805 by PKD/PRKD1; phosphorylation induces the production of inflammatory cytokines. Phosphorylated at Tyr-798 upon flagellin binding; required for signaling.
<b>细胞定位</b>	Membrane.

## 图片



Anti-TLR5 antibody (ab89497) at 5 µg/ml +  
FHs 173 whole cell lysate at 50 µg

**Predicted band size** : 97 kDa

**Observed band size** : 97 kDa

**Additional bands at** : 28 kDa. We are unsure as to the identity of these extra bands.

**Please note:** All products are "FOR RESEARCH USE ONLY AND ARE NOT INTENDED FOR DIAGNOSTIC OR THERAPEUTIC USE"

## Our Abpromise to you: Quality guaranteed and expert technical support

- Replacement or refund for products not performing as stated on the datasheet
- Valid for 12 months from date of delivery
- Response to your inquiry within 24 hours

- We provide support in Chinese, English, French, German, Japanese and Spanish
- Extensive multi-media technical resources to help you
- We investigate all quality concerns to ensure our products perform to the highest standards

If the product does not perform as described on this datasheet, we will offer a refund or replacement. For full details of the Abpromise, please visit <http://www.abcam.cn/abpromise> or contact our technical team.

### **Terms and conditions**

---

- Guarantee only valid for products bought direct from Abcam or one of our authorized distributors