


Product datasheet

Anti-ASK1 antibody [A1] ab89420

1 图像

概述

产品名称	Anti-ASK1抗体[A1]
描述	小鼠单克隆抗体[A1] to ASK1
宿主	Mouse
经测试应用	适用于: WB
种属反应性	与反应: Recombinant fragment 预测可用于: Human 
免疫原	Recombinant fragment, corresponding to amino acids 649 - 946 of Human ASK1 SwissProt:Q99683

性能

形式	Liquid
存放说明	Shipped at 4°C. Upon delivery aliquot and store at -20°C or -80°C. Avoid repeated freeze / thaw cycles.
存储溶液	Preservative: None Constituents: 10mM PBS, pH 7.2
纯度	Immunogen affinity purified
克隆	单克隆
克隆编号	A1
同种型	IgG

应用

Our [Abpromise guarantee](#) covers the use of **ab89420** in the following tested applications.

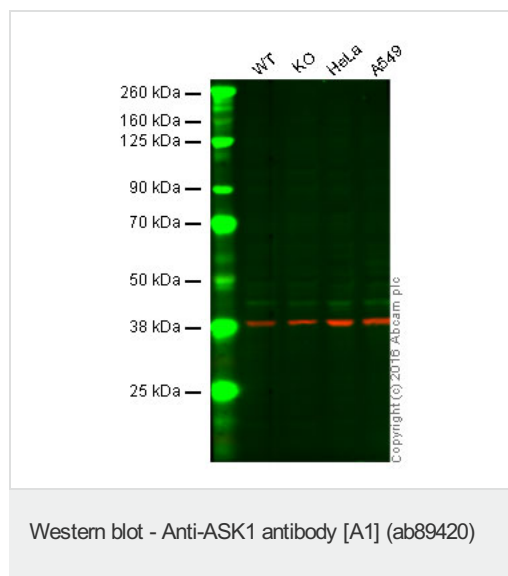
The application notes include recommended starting dilutions; optimal dilutions/concentrations should be determined by the end user.

应用	Ab评论	说明
WB		1/1000. Predicted molecular weight: 155 kDa.

## 靶标

<b>功能</b>	Component of a protein kinase signal transduction cascade. Phosphorylates and activates MAP2K4 and MAP2K6, which in turn activate the JNK and p38 MAP kinases, respectively. Overexpression induces apoptotic cell death.
<b>组织特异性</b>	Abundantly expressed in heart and pancreas.
<b>序列相似性</b>	Belongs to the protein kinase superfamily. STE Ser/Thr protein kinase family. MAP kinase kinase kinase subfamily. Contains 1 protein kinase domain.
<b>翻译后修饰</b>	Dephosphorylated and activated by PGAM5.

## 图片



**Lane 1:** Wild-type HAP1 cell lysate (40 µg)

**Lane 2:** ASK1 knockout HAP1 cell lysate (40 µg)

**Lane 3:** HeLa cell lysate (20 µg)

**Lane 4:** A549 cell lysate (20 µg)

**Lanes 1 - 4:** Merged signal (red and green).  
Green - ab89420 observed at 155 and 160 kDa. Red - loading control, [ab181602](#), observed at 37 kDa.

ab89420 was shown to recognize ASK1 when ASK1 knockout samples were used, along with additional cross-reactive bands. Wild-type and ASK1 knockout samples were subjected to SDS-PAGE. Ab89420 and [ab181602](#) (loading control to GAPDH) were diluted at 1/500 and 1:10,000 dilution respectively and incubated overnight at 4°C. Blots were developed with IRDye® 800CW Goat anti-Mouse IgG (H + L) and IRDye® 680 Goat anti-Rabbit IgG (H + L) secondary antibodies at 1:10,000 dilution for 1 hour at room temperature before imaging.

**Please note:** All products are "FOR RESEARCH USE ONLY AND ARE NOT INTENDED FOR DIAGNOSTIC OR THERAPEUTIC USE"

## Our Abpromise to you: Quality guaranteed and expert technical support

- Replacement or refund for products not performing as stated on the datasheet
- Valid for 12 months from date of delivery

- Response to your inquiry within 24 hours
- We provide support in Chinese, English, French, German, Japanese and Spanish
- Extensive multi-media technical resources to help you
- We investigate all quality concerns to ensure our products perform to the highest standards

If the product does not perform as described on this datasheet, we will offer a refund or replacement. For full details of the Abpromise, please visit <http://www.abcam.cn/abpromise> or contact our technical team.

### **Terms and conditions**

---

- Guarantee only valid for products bought direct from Abcam or one of our authorized distributors