

Product datasheet

Anti-CLECL1 antibody ab87297

1 图像

概述

产品名称	Anti-CLECL1抗体
描述	兔多克隆抗体to CLECL1
宿主	Rabbit
经测试应用	适用于: WB
种属反应性	与反应: Human
免疫原	Synthetic peptide corresponding to a region within the N terminal amino acids 2-51 (VSNFFHVIQV FEKSATLISK TEHIGFVIYS WRKSTTHLGS RRFKAISML) of Human CLECL1 (NP_742001).
阳性对照	THP1 cell lysate.

性能

形式	Liquid
存放说明	Shipped at 4°C. Upon delivery aliquot and store at -20°C. Avoid repeated freeze / thaw cycles.
存储溶液	Preservative: None Constituents: 2% Sucrose, PBS
纯度	Immunogen affinity purified
克隆	多克隆
同种型	IgG

应用

Our [Abpromise guarantee](#) covers the use of **ab87297** in the following tested applications.

The application notes include recommended starting dilutions; optimal dilutions/concentrations should be determined by the end user.

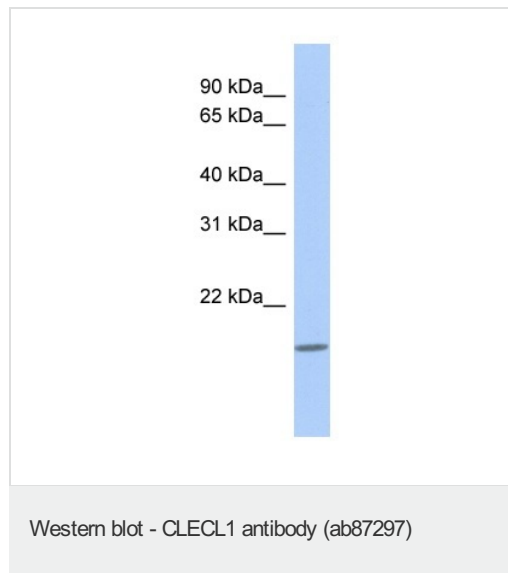
应用	Ab评论	说明
WB		Use a concentration of 1 µg/ml. Predicted molecular weight: 19 kDa. Good results were obtained when blocked with 5% non-fat dry milk in 0.05% PBS-T.

靶标

相关性 CLECL1 is a type II transmembrane, C-type lectin-like protein expressed on dendritic cells (DCs) and B cells. It interacts with subsets of T cells as a costimulatory molecule that enhances interleukin-4 (IL4) production.

细胞定位 Cell membrane; Single-pass type II membrane protein.

图片



Anti-CLECL1 antibody (ab87297) at 1 µg/ml
(in 5% skim milk / PBS buffer) + THP1 cell
lysate at 10 µg

Secondary

HRP conjugated anti-Rabbit IgG at 1/50000
dilution

Predicted band size: 19 kDa

Observed band size: 19 kDa

12% gel

Please note: All products are "FOR RESEARCH USE ONLY AND ARE NOT INTENDED FOR DIAGNOSTIC OR THERAPEUTIC USE"

Our Abpromise to you: Quality guaranteed and expert technical support

- Replacement or refund for products not performing as stated on the datasheet
- Valid for 12 months from date of delivery
- Response to your inquiry within 24 hours
- We provide support in Chinese, English, French, German, Japanese and Spanish
- Extensive multi-media technical resources to help you
- We investigate all quality concerns to ensure our products perform to the highest standards

If the product does not perform as described on this datasheet, we will offer a refund or replacement. For full details of the Abpromise, please visit <http://www.abcam.cn/abpromise> or contact our technical team.

Terms and conditions

- Guarantee only valid for products bought direct from Abcam or one of our authorized distributors