


Product datasheet

Anti-ZO1 tight junction protein antibody ab84934

1 图像

概述

产品名称	Anti-ZO1 tight junction蛋白抗体
描述	兔多克隆抗体to ZO1 tight junction蛋白
宿主	Rabbit
经测试应用	适用于: WB
种属反应性	与反应: Human 预测可用于: Mouse, Dog 
免疫原	Synthetic peptide conjugated to KLH derived from within residues 650 - 750 of Human ZO1 tight junction protein.参阅Abcam的专有抗源政策(Peptide available as ab101198 .)
阳性对照	This antibody gave a positive signal in Human Lung Tissue Lysate.

性能

形式	Liquid
存放说明	Shipped at 4°C. Store at +4°C short term (1-2 weeks). Upon delivery aliquot. Store at -20°C or -80°C. Avoid freeze / thaw cycle.
存储溶液	Preservative: 0.02% Sodium Azide Constituents: 1% BSA, PBS, pH 7.4
纯度	Immunogen affinity purified
克隆	多克隆
同种型	IgG

应用

Our [Abpromise guarantee](#) covers the use of **ab84934** in the following tested applications.

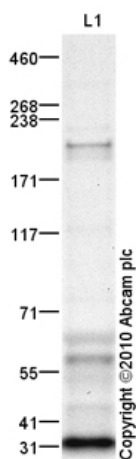
The application notes include recommended starting dilutions; optimal dilutions/concentrations should be determined by the end user.

应用	Ab评论	说明
WB		Use a concentration of 1 µg/ml. Detects a band of approximately 210 kDa (predicted molecular weight: 195 kDa).

靶标

功能	The N-terminal may be involved in transducing a signal required for tight junction assembly, while the C-terminal may have specific properties of tight junctions. The alpha domain might be involved in stabilizing junctions.
组织特异性	The alpha-containing isoform is found in most epithelial cell junctions. The short isoform is found both in endothelial cells and the highly specialized epithelial junctions of renal glomeruli and Sertoli cells of the seminiferous tubules.
序列相似性	Belongs to the MAGUK family. Contains 1 guanylate kinase-like domain. Contains 3 PDZ (DHR) domains. Contains 1 SH3 domain. Contains 1 ZU5 domain.
结构域	The second PDZ domain mediates interaction with GJA12.
翻译后修饰	Phosphorylated. Dephosphorylated by PTPRJ.
细胞定位	Cell membrane. Cell junction > tight junction. Movement of ZO-1 from the cytoplasm to membrane is an early event occurring concurrently with cell-cell contact.

图片



Western blot - ZO1 tight junction protein antibody
(ab84934)

Anti-ZO1 tight junction protein antibody
(ab84934) at 1 µg/ml + Lung (Human) Tissue
Lysate at 10 µg

Secondary

Goat Anti-Rabbit IgG H&L (HRP) preadsorbed
(ab97080) at 1/5000 dilution

Developed using the ECL technique.

Performed under reducing conditions.

Predicted band size: 195 kDa

Observed band size: 210 kDa

Additional bands at: 31 kDa, 58 kDa. We
are unsure as to the identity of these extra
bands.

Exposure time: 12 minutes

ZO1 tight junction protein contains an
extensive number of potential
phosphorylation sites (SwissProt) which may
explain its migration at a higher molecular
weight than predicted.

Please note: All products are "FOR RESEARCH USE ONLY AND ARE NOT INTENDED FOR DIAGNOSTIC OR THERAPEUTIC USE"

Our Abpromise to you: Quality guaranteed and expert technical support

- Replacement or refund for products not performing as stated on the datasheet
- Valid for 12 months from date of delivery
- Response to your inquiry within 24 hours
- We provide support in Chinese, English, French, German, Japanese and Spanish
- Extensive multi-media technical resources to help you
- We investigate all quality concerns to ensure our products perform to the highest standards

If the product does not perform as described on this datasheet, we will offer a refund or replacement. For full details of the Abpromise, please visit <http://www.abcam.cn/abpromise> or contact our technical team.

Terms and conditions

- Guarantee only valid for products bought direct from Abcam or one of our authorized distributors