

Product datasheet

Anti-ASH2L antibody ab84732

3 图像

概述

产品名称	Anti-ASH2L 抗体
描述	兔多克隆抗体 to ASH2L
宿主	Rabbit
经测试应用	适用于: IHC-P, WB
种属反应性	与反应: Human 预测可用于: Mouse, Rat, Rabbit, Horse, Chicken, Guinea pig, Cow, Cat, Dog
免疫原	Synthetic peptide corresponding to a region within the internal amino acids 288-337 (AAGSSGKGRG AKRKQQDGGT TGTTKKARSD PLFSAQRLPP HGYPLEHPFN) of Human ASH2L (NP_004665). Run BLAST with ExPASy Run BLAST with NCBI
阳性对照	HeLa cell lysate.

性能

形式	Liquid
存放说明	Shipped at 4°C. Upon delivery aliquot and store at -20°C. Avoid repeated freeze / thaw cycles.
存储溶液	Preservative: None Constituents: 2% Sucrose, PBS
纯度	Immunogen affinity purified
克隆	多克隆
同种型	IgG

应用

Our [Abpromise guarantee](#) covers the use of **ab84732** in the following tested applications.

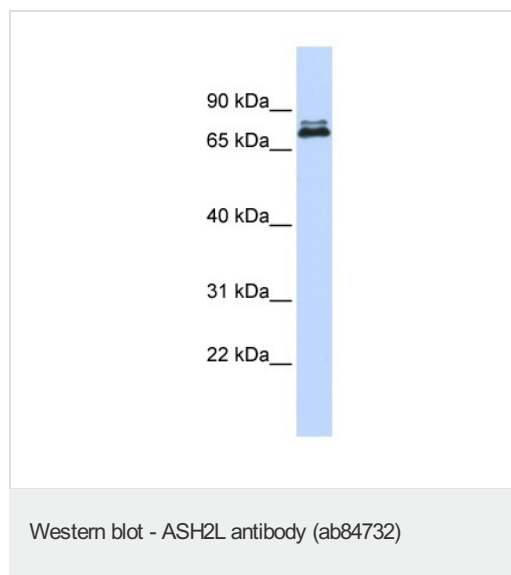
The application notes include recommended starting dilutions; optimal dilutions/concentrations should be determined by the end user.

应用	Ab 评论	说明
IHC-P		Use a concentration of 5 µg/ml.
WB		Use a concentration of 1 µg/ml. Detects a band of approximately 69 kDa (predicted molecular weight: 69 kDa). Good results were obtained when blocked with 5% non-fat dry milk in 0.05% PBS-T.

靶标

功能	Component of the Set1/Ash2 histone methyltransferase (HMT) complex, a complex that specifically methylates 'Lys-4' of histone H3, but not if the neighboring 'Lys-9' residue is already methylated. As part of the MLL1/MLL complex it is involved in methylation and dimethylation at 'Lys-4' of histone H3. May function as a transcriptional regulator. May play a role in hematopoiesis.
组织特异性	Ubiquitously expressed. Predominantly expressed in adult heart and testis and fetal lung and liver, with barely detectable expression in adult lung, liver, kidney, prostate, and peripheral leukocytes.
序列相似性	Contains 1 B30.2/SPRY domain.
细胞定位	Nucleus.

图片



Anti-ASH2L antibody (ab84732) at 1 µg/ml (in 5% skim milk / PBS buffer) + HeLa cell lysate at 10 µg

Secondary

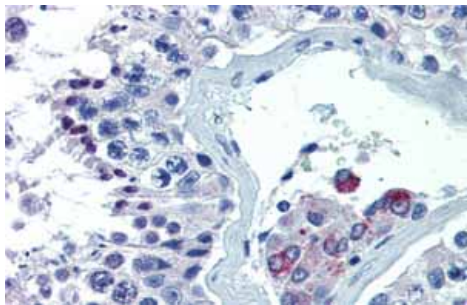
HRP conjugated anti-Rabbit IgG at 1/50000 dilution

Predicted band size: 69 kDa

Observed band size: 69 kDa

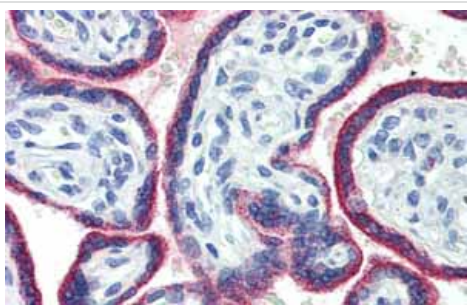
Additional bands at: approx. 75 kDa. We are unsure as to the identity of these extra bands.

12% gel



Immunohistochemistry (Formalin/PFA-fixed paraffin-embedded sections)-Anti-ASH2L antibody(ab84732)

Immunohistochemistry (Formalin/PFA-fixed paraffin-embedded sections) analysis of human testis tissue labelling ASH2L with ab84732 at 5.0µg/ml.



Immunohistochemistry (Formalin/PFA-fixed paraffin-embedded sections)-Anti-ASH2L antibody(ab84732)

Immunohistochemistry (Formalin/PFA-fixed paraffin-embedded sections) analysis of human placenta tissue labelling ASH2L with ab84732 at 5.0µg/ml.

Please note: All products are "FOR RESEARCH USE ONLY AND ARE NOT INTENDED FOR DIAGNOSTIC OR THERAPEUTIC USE"

Our Abpromise to you: Quality guaranteed and expert technical support

- Replacement or refund for products not performing as stated on the datasheet
- Valid for 12 months from date of delivery
- Response to your inquiry within 24 hours
- We provide support in Chinese, English, French, German, Japanese and Spanish
- Extensive multi-media technical resources to help you
- We investigate all quality concerns to ensure our products perform to the highest standards

If the product does not perform as described on this datasheet, we will offer a refund or replacement. For full details of the Abpromise, please visit <http://www.abcam.cn/abpromise> or contact our technical team.

Terms and conditions

- Guarantee only valid for products bought direct from Abcam or one of our authorized distributors