

Product datasheet

Anti-PITX1 antibody ab84638

1 图像

概述

| | |
|-------|--|
| 产品名称 | Anti-PITX1抗体 |
| 描述 | 兔多克隆抗体to PITX1 |
| 宿主 | Rabbit |
| 经测试应用 | 适用于: WB |
| 种属反应性 | 与反应: Human 预测可用于: Mouse, Rat, Guinea pig, Cow, Dog |
| 免疫原 | Synthetic peptide corresponding to a region within N terminal amino acids 36-85 (PADPREPLEN SASESSDTEL PEKERGGEPK GPEDSGAGGT GCGGADDPK) of Human PITX1 (NP_002644). Run BLAST with ExPASy Run BLAST with NCBI |
| 阳性对照 | MCF7 cell lysate. |

性能

| | |
|------|--|
| 形式 | Liquid |
| 存放说明 | Shipped at 4°C. Upon delivery aliquot and store at -20°C. Avoid repeated freeze / thaw cycles. |
| 存储溶液 | Preservative: None Constituents: 2% Sucrose, PBS |
| 纯度 | Immunogen affinity purified |
| 克隆 | 多克隆 |
| 同种型 | IgG |

应用

Our [Abpromise guarantee](#) covers the use of **ab84638** in the following tested applications.

The application notes include recommended starting dilutions; optimal dilutions/concentrations should be determined by the end user.

| 应用 | Ab 评论 | 说明 |
|----|-------|----|
|----|-------|----|

WB Use a concentration of 1 µg/ml. Detects a band of approximately 34 kDa (predicted molecular weight: 34 kDa). Good results were obtained when blocked with 5% non-fat dry milk in 0.05% PBS-T.

靶标

功能 May play a role in the development of anterior structures, and in particular, the brain and facies and in specifying the identity or structure of hindlimb.

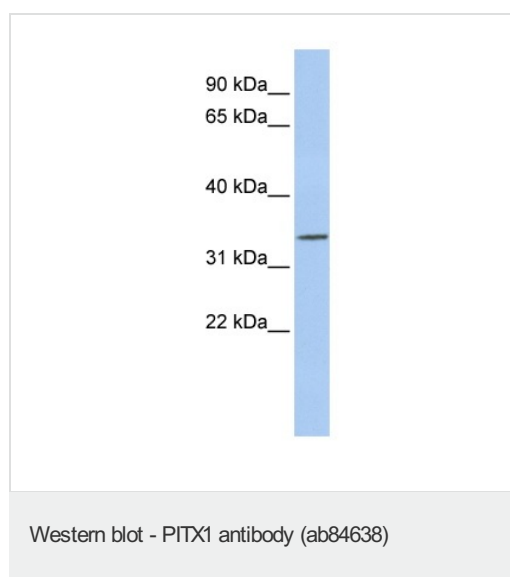
疾病相关 Defects in PITX1 are a cause of congenital clubfoot (CCF) [MIM:119800]; also known as talipes equinovarus (TEV). Clubfoot is a congenital limb deformity defined as fixation of the foot in cavus, adductus, varus, and equinus (i.e. inclined inwards, axially rotated outwards, and pointing downwards) with concomitant soft tissue abnormalities. Clubfoot may occur in isolation or as part of a syndrome. Clubfoot appears to be a multifactorial trait.

序列相似性 Belongs to the paired homeobox family. Bicoid subfamily.

Contains 1 homeobox DNA-binding domain.

细胞定位 Nucleus.

图片



Anti-PITX1 antibody (ab84638) at 1 µg/ml (in 5% skim milk / PBS buffer) + MCF7 cell lysate at 10 µg

Secondary

HRP conjugated anti-Rabbit IgG at 1/50000 dilution

Predicted band size: 34 kDa

Observed band size: 34 kDa

Gel concentration: 12%

Please note: All products are "FOR RESEARCH USE ONLY AND ARE NOT INTENDED FOR DIAGNOSTIC OR THERAPEUTIC USE"

Our Abpromise to you: Quality guaranteed and expert technical support

- Replacement or refund for products not performing as stated on the datasheet
- Valid for 12 months from date of delivery

- Response to your inquiry within 24 hours
- We provide support in Chinese, English, French, German, Japanese and Spanish
- Extensive multi-media technical resources to help you
- We investigate all quality concerns to ensure our products perform to the highest standards

If the product does not perform as described on this datasheet, we will offer a refund or replacement. For full details of the Abpromise, please visit <http://www.abcam.cn/abpromise> or contact our technical team.

Terms and conditions

- Guarantee only valid for products bought direct from Abcam or one of our authorized distributors