


Product datasheet

Anti-Mre11 antibody ab84495

2 图像

概述

产品名称	Anti-Mre11抗体
描述	兔多克隆抗体to Mre11
经测试应用	适用于: IHC-P
种属反应性	与反应: Mouse, Human 预测可用于: Rabbit, Horse, Cow, Ferret, Gorilla, Opossum, Bat 
免疫原	Synthetic peptide corresponding to a region between residues 1 and 50 of human Mre11 (NP_005582.1).
阳性对照	Human basal cell carcinoma; mouse squamous cell carcinoma

性能

形式	Liquid
存放说明	Shipped at 4°C. Upon delivery aliquot and store at -20°C. Avoid freeze / thaw cycles.
存储溶液	Preservative: 0.09% Sodium Azide Constituents: 0.1% BSA, Tris buffered saline
纯度	Immunogen affinity purified
纯化说明	ab84495 was affinity purified using an epitope specific to Mre11 immobilized on solid support.
克隆	多克隆
同种型	IgG

应用

Our [Abpromise guarantee](#) covers the use of **ab84495** in the following tested applications.

The application notes include recommended starting dilutions; optimal dilutions/concentrations should be determined by the end user.

应用	Ab评论	说明
----	------	----

IHC-P

应用说明	IHC-P: 1/100 - 1/500. Epitope exposure is recommended.
------	---

Epitope exposure with citrate buffer will enhance staining.

Likely to work with frozen sections.

Not yet tested in other applications.

Optimal dilutions/concentrations should be determined by the end user.

靶标

功能

Component of the MRN complex, which plays a central role in double-strand break (DSB) repair, DNA recombination, maintenance of telomere integrity and meiosis. The complex possesses single-strand endonuclease activity and double-strand-specific 3'-5' exonuclease activity, which are provided by MRE11A. RAD50 may be required to bind DNA ends and hold them in close proximity. This could facilitate searches for short or long regions of sequence homology in the recombining DNA templates, and may also stimulate the activity of DNA ligases and/or restrict the nuclease activity of MRE11A to prevent nucleolytic degradation past a given point. The complex may also be required for DNA damage signaling via activation of the ATM kinase. In telomeres the MRN complex may modulate t-loop formation.

疾病相关

Defects in MRE11A are a cause of ataxia telangiectasia-like disorder (ATLD) [MIM:604391]. ATLD is a disease with the same clinical feature than ataxia-telangiectasia but with a somewhat milder clinical course.

序列相似性

Belongs to the MRE11/RAD32 family.

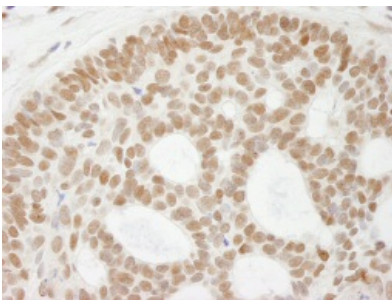
翻译后修饰

Phosphorylated upon DNA damage, probably by ATM or ATR.

细胞定位

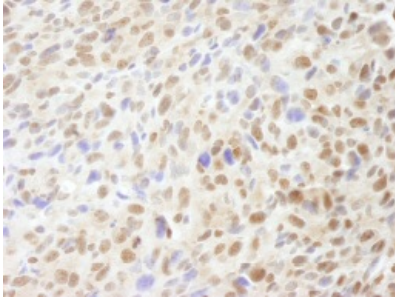
Nucleus. Localizes to discrete nuclear foci after treatment with genotoxic agents.

图片



ab84495, at a dilution of 1/250, staining Mre11 in formalin fixed, paraffin embedded human basal cell carcinoma by Immunohistochemistry.
Detection: DAB staining

Immunohistochemistry (Formalin/PFA-fixed paraffin-embedded sections) - Mre11 antibody (ab84495)



ab84495, at a dilution of 1/250, staining Mre11 in formalin fixed, paraffin embedded squamous cell carcinoma by Immunohistochemistry.
Detection: DAB staining

Immunohistochemistry (Formalin/PFA-fixed paraffin-embedded sections) - Mre11 antibody (ab84495)

Please note: All products are "FOR RESEARCH USE ONLY AND ARE NOT INTENDED FOR DIAGNOSTIC OR THERAPEUTIC USE"

Our Abpromise to you: Quality guaranteed and expert technical support

- Replacement or refund for products not performing as stated on the datasheet
- Valid for 12 months from date of delivery
- Response to your inquiry within 24 hours
- We provide support in Chinese, English, French, German, Japanese and Spanish
- Extensive multi-media technical resources to help you
- We investigate all quality concerns to ensure our products perform to the highest standards

If the product does not perform as described on this datasheet, we will offer a refund or replacement. For full details of the Abpromise, please visit <http://www.abcam.cn/abpromise> or contact our technical team.

Terms and conditions

- Guarantee only valid for products bought direct from Abcam or one of our authorized distributors