


Product datasheet

Anti-Rho GTPase-activating protein 24 antibody ab84046

2 图像

概述

产品名称	Anti-Rho GTPase-activating蛋白24抗体
描述	兔多克隆抗体 to Rho GTPase-activating蛋白24
宿主	Rabbit
经测试应用	适用于: WB, ICC/IF
种属反应性	与反应: Human 预测可用于: Cow 
免疫原	Synthetic peptide conjugated to KLH derived from within residues 250 - 350 of Human Rho GTPase-activating protein 24. 参阅Abcam的专有抗源政策(Peptide available as ab93751 .)
阳性对照	This antibody gave a positive signal in A498 whole cell lysate.

性能

形式	Liquid
存放说明	Shipped at 4°C. Store at +4°C short term (1-2 weeks). Upon delivery aliquot. Store at -20°C or -80°C. Avoid freeze / thaw cycle.
存储溶液	Preservative: 0.02% Sodium Azide Constituents: 1% BSA, PBS, pH 7.4
纯度	Immunogen affinity purified
克隆	多克隆
同种型	IgG

应用

Our [Abpromise guarantee](#) covers the use of **ab84046** in the following tested applications.

The application notes include recommended starting dilutions; optimal dilutions/concentrations should be determined by the end user.

应用	Ab评论	说明
WB		Use a concentration of 1 µg/ml. Detects a band of approximately 84 kDa (predicted molecular weight: 84 kDa).
ICC/IF		Use a concentration of 5 µg/ml.

靶标

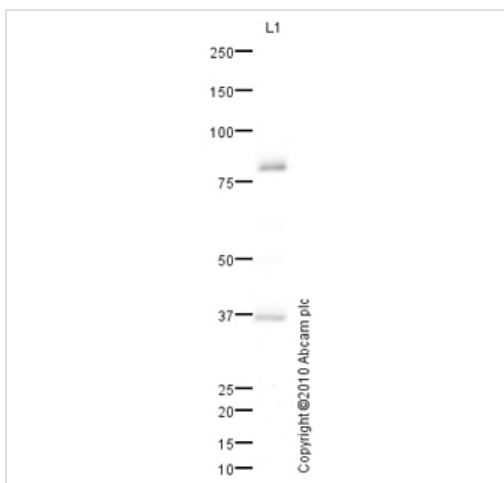
相关性

ARHGAP24 is a rho GTPase-activating protein involved in cell polarity, cell morphology and cytoskeletal organization. It acts as a GTPase activator for the Rac-type GTPase by converting it to an inactive GDP-bound state. It controls actin remodeling by inactivating Rac downstream of Rho leading to suppress leading edge protrusion and promotes cell retraction to achieve cellular polarity. There are five different isoforms. Isoform 1 is widely expressed with a higher level in kidney. Isoform 2 is mainly expressed in endothelial cells and is involved in modulation of angiogenesis.

细胞定位

Cytoplasmic, cytoskeleton. Cell junction: adherens junction, focal adhesion. Cell projection.

图片



Western blot - Rho GTPase-activating protein 24 antibody (ab84046)

Anti-Rho GTPase-activating protein 24 antibody (ab84046) at 1 µg/ml + A498 (Human Kidney Carcinoma) Whole Cell Lysate at 10 µg

Secondary

Goat polyclonal to Rabbit IgG - H&L - Pre-Adsorbed (HRP) at 1/3000 dilution

Developed using the ECL technique.

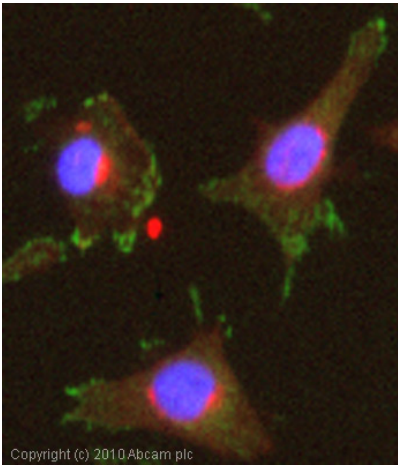
Performed under reducing conditions.

Predicted band size: 84 kDa

Observed band size: 84 kDa

Additional bands at: 36 kDa. We are unsure as to the identity of these extra bands.

Exposure time: 15 minutes



Immunocytochemistry/ Immunofluorescence - Rho GTPase-activating protein 24 antibody (ab84046)

ICC/IF image of ab84046 stained HeLa cells. The cells were 4% PFA fixed (10 min) and then incubated in 1%BSA / 10% normal goat serum / 0.3M glycine in 0.1% PBS-Tween for 1h to permeabilise the cells and block non-specific protein-protein interactions. The cells were then incubated with the antibody (ab84046, 5µg/ml) overnight at +4°C. The secondary antibody (green) was Alexa Fluor® 488 goat anti-rabbit IgG (H+L) used at a 1/1000 dilution for 1h. Alexa Fluor® 594 WGA was used to label plasma membranes (red) at a 1/200 dilution for 1h. DAPI was used to stain the cell nuclei (blue) at a concentration of 1.43µM. This antibody also gave a positive result in 4% PFA fixed (10 min) Hek293, HepG2 and MCF7 cells at 5µg/ml.

Please note: All products are "FOR RESEARCH USE ONLY AND ARE NOT INTENDED FOR DIAGNOSTIC OR THERAPEUTIC USE"

Our Abpromise to you: Quality guaranteed and expert technical support

- Replacement or refund for products not performing as stated on the datasheet
- Valid for 12 months from date of delivery
- Response to your inquiry within 24 hours
- We provide support in Chinese, English, French, German, Japanese and Spanish
- Extensive multi-media technical resources to help you
- We investigate all quality concerns to ensure our products perform to the highest standards

If the product does not perform as described on this datasheet, we will offer a refund or replacement. For full details of the Abpromise, please visit <http://www.abcam.cn/abpromise> or contact our technical team.

Terms and conditions

- Guarantee only valid for products bought direct from Abcam or one of our authorized distributors