

Product datasheet

Anti-Creatine Kinase MM antibody ab83441

1 References 1 图像

概述

| | |
|-------|---|
| 产品名称 | Anti-Creatine Kinase MM抗体 |
| 描述 | 兔多克隆抗体to Creatine Kinase MM |
| 宿主 | Rabbit |
| 经测试应用 | 适用于: WB, ELISA |
| 种属反应性 | 与反应: Human 预测可用于: Mouse, Rat, Rabbit, Horse, Chicken, Guinea pig, Cow, Cat, Dog, Pig, Zebrafish |
| 免疫原 | Synthetic peptide corresponding to a region within the N terminal amino acids 71-120 (VGCVAGDEESYEVFKELFDPIISDRHGGYKPTDKHKTDLNHENLKGDD L) of Human CKM (NP_001815). |
| 阳性对照 | Human fetal muscle lysate. |

性能

| | |
|------|--|
| 形式 | Liquid |
| 存放说明 | Shipped at 4°C. Store at +4°C short term (1-2 weeks). Upon delivery aliquot. Store at -20°C long term. |
| 存储溶液 | Preservative: None Constituents: 2% Sucrose, PBS |
| 纯度 | Immunogen affinity purified |
| 纯化说明 | Rabbit Ig G is purified by peptide affinity chromatography method. |
| 克隆 | 多克隆 |
| 同种型 | IgG |

应用

Our [Abpromise guarantee](#) covers the use of **ab83441** in the following tested applications.

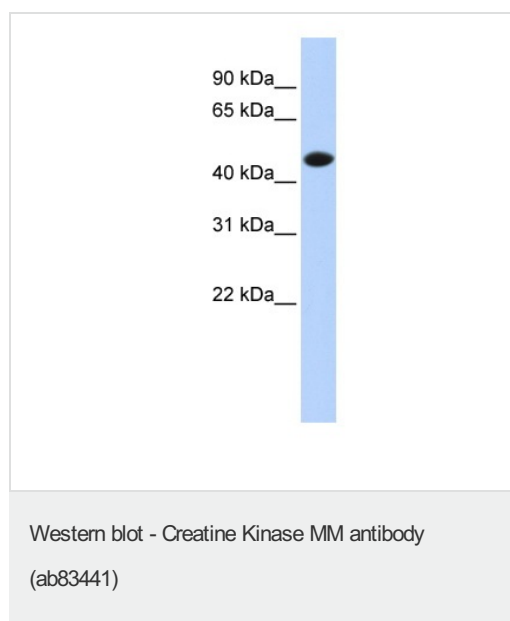
The application notes include recommended starting dilutions; optimal dilutions/concentrations should be determined by the end user.

| 应用 | Ab评论 | 说明 |
|-------|------|--|
| WB | | Use a concentration of 1 µg/ml. Predicted molecular weight: 43 kDa. Good results were obtained when blocked with 5% non-fat dry milk in 0.05% PBS-T. |
| ELISA | | Use at an assay dependent concentration. Titre in peptide based assay is 1/1562500. |

靶标

| | |
|--------------|---|
| 功能 | Reversibly catalyzes the transfer of phosphate between ATP and various phosphagens (e.g. creatine phosphate). Creatine kinase isoenzymes play a central role in energy transduction in tissues with large, fluctuating energy demands, such as skeletal muscle, heart, brain and spermatozoa. |
| 序列相似性 | Belongs to the ATP:guanido phosphotransferase family. Contains 1 phosphagen kinase C-terminal domain. Contains 1 phosphagen kinase N-terminal domain. |
| 细胞定位 | Cytoplasm. |

图片



Anti-Creatine Kinase MM antibody (ab83441)
at 1 µg/ml (in 5% skim milk / PBS buffer) +
Human fetal muscle lysate at 10 µg

Secondary

HRP conjugated anti-Rabbit IgG diluted in
1/50000 - 1/100000 as secondary antibody.

Predicted band size: 43 kDa

12% gel

Please note: All products are "FOR RESEARCH USE ONLY AND ARE NOT INTENDED FOR DIAGNOSTIC OR THERAPEUTIC USE"

Our Abpromise to you: Quality guaranteed and expert technical support

- Replacement or refund for products not performing as stated on the datasheet
- Valid for 12 months from date of delivery
- Response to your inquiry within 24 hours

- We provide support in Chinese, English, French, German, Japanese and Spanish
- Extensive multi-media technical resources to help you
- We investigate all quality concerns to ensure our products perform to the highest standards

If the product does not perform as described on this datasheet, we will offer a refund or replacement. For full details of the Abpromise, please visit <http://www.abcam.cn/abpromise> or contact our technical team.

Terms and conditions

- Guarantee only valid for products bought direct from Abcam or one of our authorized distributors