

Product datasheet

Anti-CD15 antibody [28] (FITC) ab82537

★★★★☆ 1 Abreviews 2 图像

概述

产品名称	Anti-CD15抗体[28] (FITC)
描述	小鼠单克隆抗体[28] to CD15 (FITC)
宿主	Mouse
偶联物	FITC. Ex: 493nm, Em: 528nm
经测试应用	适用于: IP, IHC-Fr, Flow Cyt, Inhibition Assay
种属反应性	与反应: Human
免疫原	The details of the immunogen for this antibody are not available

性能

形式	Liquid
存放说明	Shipped at 4°C. Store at +4°C.
存储溶液	Preservative: 0.1% Sodium Azide Constituents: PBS
纯度	Purified IgM
克隆	单克隆
克隆编号	28
同种型	IgM

应用

Our [Abpromise guarantee](#) covers the use of **ab82537** in the following tested applications.

The application notes include recommended starting dilutions; optimal dilutions/concentrations should be determined by the end user.

应用	Ab评论	说明
IP		Use at an assay dependent concentration.
IHC-Fr		Use at an assay dependent concentration.

应用	Ab评论	说明
Flow Cyt	★★★★☆	Use 1µg for 10 ⁶ cells. ab91546 - Mouse monoclonal IgM, is suitable for use as an isotype control with this antibody.
Inhibition Assay		Use at an assay dependent concentration. Inhibition of neutrophil phagocytosis and bacterial activity.

靶标

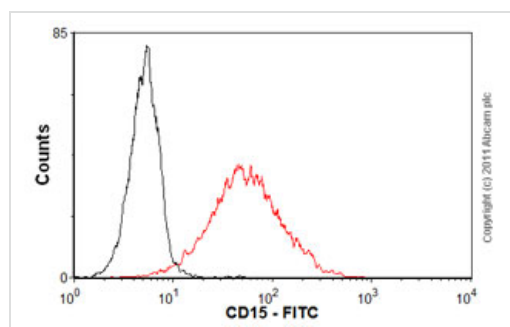
相关性

CD15 is a carbohydrate adhesion molecule (and not a protein) that mediates phagocytosis and chemotaxis. Synthesis is directed by FUT4 in lymphoid cells and mature granulocytes, and by FUT9 in promyelocytes and monocytes.

细胞定位

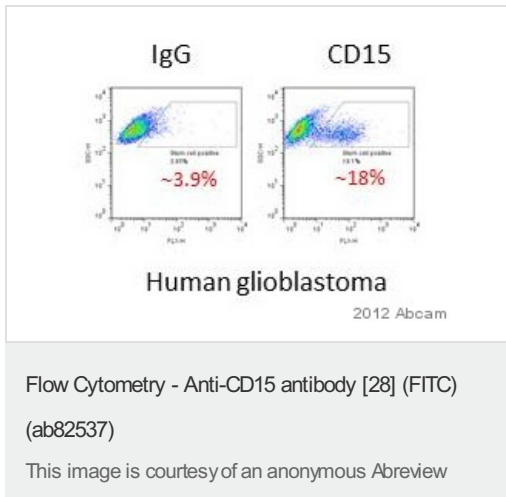
Golgi Apparatus; Membrane-bound form in trans cisternae of Golgi.

图片



Flow Cytometry - Anti-CD15 antibody [28] (FITC)
(ab82537)

Overlay histogram showing HL60 cells stained with ab82537 (red line). The cells were fixed with 80% methanol (5 min) and then permeabilized with 0.1% PBS-Tween for 20 min. The cells were then incubated in 1x PBS / 10% normal goat serum / 0.3M glycine to block non-specific protein-protein interactions followed by the antibody (ab82537, 1µg/1x10⁶ cells) for 30 min at 22°C. Isotype control antibody (black line) was mouse IgGM (FITC) (2µg/1x10⁶ cells) for 30 min at 22°C. Acquisition of >5,000 events was performed. This antibody gave a positive signal in HL60 cells fixed with 4% paraformaldehyde (10 min)/permeabilized with 0.1% PBS-Tween for 20 min used under the same conditions.



ab82537 staining CD15 in Human primary glioblastoma cell line by Flow Cytometry. Cells harvested, fixed with 70% ice-cold ethanol and permeabilized with Triton X-100 0.1%. The sample was incubated with the antibody (1/10) for 60 minutes.

Gating Strategy: Cells incubated with a mouse IgG-FITC.

Please note: All products are "FOR RESEARCH USE ONLY AND ARE NOT INTENDED FOR DIAGNOSTIC OR THERAPEUTIC USE"

Our Abpromise to you: Quality guaranteed and expert technical support

- Replacement or refund for products not performing as stated on the datasheet
- Valid for 12 months from date of delivery
- Response to your inquiry within 24 hours
- We provide support in Chinese, English, French, German, Japanese and Spanish
- Extensive multi-media technical resources to help you
- We investigate all quality concerns to ensure our products perform to the highest standards

If the product does not perform as described on this datasheet, we will offer a refund or replacement. For full details of the Abpromise, please visit <http://www.abcam.cn/abpromise> or contact our technical team.

Terms and conditions

- Guarantee only valid for products bought direct from Abcam or one of our authorized distributors