

## Product datasheet

# Anti-SRP1 antibody ab81448

### 4 图像

#### 概述

---

产品名称	Anti-SRP1抗体
描述	兔多克隆抗体to SRP1
宿主	Rabbit
经测试应用	适用于: WB
种属反应性	与反应: Human 预测可用于: Mouse, Rat, Rabbit, Horse, Chicken, Guinea pig, Cow, Cat, Dog, Pig, Zebrafish



免疫原	Synthetic peptide, corresponding to a region within N terminal amino acids 1-50, MTTPGKENFR LKSYKNKSLN PDEMRRRREE EGLQLRKQKR EEQLFKRRNV of Human SRP1 (NP_002255). <a href="#">Run BLAST with ExPASy</a> <a href="#">Run BLAST with NCBI</a>
-----	---

阳性对照	721_B Cell Lysate
------	-------------------

#### 性能

---

形式	Liquid
存放说明	Shipped at 4°C. Upon delivery aliquot and store at -20°C. Avoid repeated freeze / thaw cycles.
存储溶液	Preservative: None Constituents: 2% Sucrose, PBS
纯度	Immunogen affinity purified
克隆	多克隆
同种型	IgG

#### 应用

---

Our [Abpromise guarantee](#) covers the use of **ab81448** in the following tested applications.

The application notes include recommended starting dilutions; optimal dilutions/concentrations should be determined by the end user.

应用	Ab评论	说明
WB		Use a concentration of 1 µg/ml. Predicted molecular weight: 60 kDa. Good results were obtained when blocked with 5% non-fat dry milk in 0.05% PBS-T.

## 靶标

### 功能

Functions in nuclear protein import as an adapter protein for nuclear receptor KPNB1. Binds specifically and directly to substrates containing either a simple or bipartite NLS motif. Docking of the importin/substrate complex to the nuclear pore complex (NPC) is mediated by KPNB1 through binding to nucleoporin FxFG repeats and the complex is subsequently translocated through the pore by an energy requiring, Ran-dependent mechanism. At the nucleoplasmic side of the NPC, Ran binds to importin-beta and the three components separate and importin-alpha and -beta are re-exported from the nucleus to the cytoplasm where GTP hydrolysis releases Ran from importin. The directionality of nuclear import is thought to be conferred by an asymmetric distribution of the GTP- and GDP-bound forms of Ran between the cytoplasm and nucleus. In vitro, mediates the nuclear import of human cytomegalovirus UL84 by recognizing a non-classical NLS.

### 组织特异性

Expressed ubiquitously.

### 序列相似性

Belongs to the importin alpha family.

Contains 10 ARM repeats.

Contains 1 IBB domain.

### 结构域

Consists of an N-terminal hydrophilic region, a hydrophobic central region composed of 10 repeats, and a short hydrophilic C-terminus. The N-terminal hydrophilic region contains the importin beta binding domain (IBB domain), which is sufficient for binding importin beta and essential for nuclear protein import.

The IBB domain is thought to act as an intrasteric autoregulatory sequence by interacting with the internal autoinhibitory NLS. Binding of KPNB1 probably overlaps the internal NLS and contributes to a high affinity for cytoplasmic NLS-containing cargo substrates. After dissociation of the importin/substrate complex in the nucleus the internal autoinhibitory NLS contributes to a low affinity for nuclear NLS-containing proteins.

The major and minor NLS binding sites are mainly involved in recognition of simple or bipartite NLS motifs. Structurally located within in a helical surface groove they contain several conserved Trp and Asn residues of the corresponding third helices (H3) of ARM repeats which mainly contribute to binding.

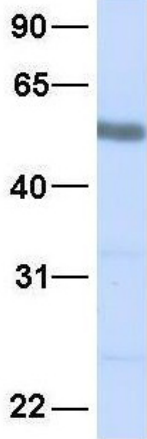
### 翻译后修饰

Polyubiquitinated in the presence of RAG1 (in vitro).

### 细胞定位

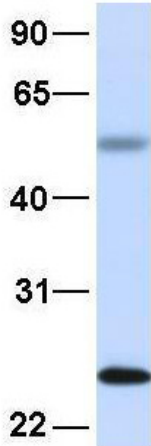
Cytoplasm. Nucleus.

## 图片



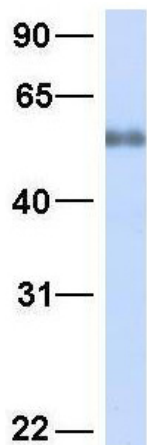
Western blot analysis of Human fetal lung tissue lysate labeling SRP1 with ab81448 at 1.0µg/ml.

Western blot - Anti-SRP1 antibody (ab81448)



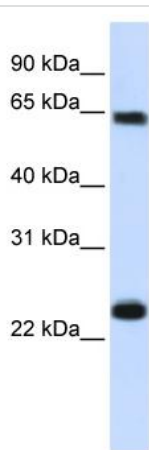
Western blot analysis of Human fetal liver tissue lysate labeling SRP1 with ab81448 at 1.0µg/ml.

Western blot - Anti-SRP1 antibody (ab81448)



Western blot analysis of Human fetal heart tissue lysate labeling SRP1 with ab81448 at 1.0µg/ml.

Western blot - Anti-SRP1 antibody (ab81448)



Western blot - SRP1 antibody (ab81448)

Anti-SRP1 antibody (ab81448) at 1 µg/ml (in 5% skim milk / PBS buffer) + 721\_B Cell Lysate at 10 µg

#### Secondary

HRP conjugated anti-Rabbit IgG at 1/50000 dilution

**Predicted band size:** 60 kDa

**Observed band size:** 64 kDa

**Additional bands at:** 25 kDa. We are unsure as to the identity of these extra bands.

Gel Concentration: 12%

**Please note:** All products are "FOR RESEARCH USE ONLY AND ARE NOT INTENDED FOR DIAGNOSTIC OR THERAPEUTIC USE"

#### Our Abpromise to you: Quality guaranteed and expert technical support

- Replacement or refund for products not performing as stated on the datasheet
- Valid for 12 months from date of delivery
- Response to your inquiry within 24 hours
- We provide support in Chinese, English, French, German, Japanese and Spanish
- Extensive multi-media technical resources to help you
- We investigate all quality concerns to ensure our products perform to the highest standards

If the product does not perform as described on this datasheet, we will offer a refund or replacement. For full details of the Abpromise, please visit <http://www.abcam.cn/abpromise> or contact our technical team.

#### Terms and conditions

- Guarantee only valid for products bought direct from Abcam or one of our authorized distributors