

Product datasheet

Anti-LMF2 antibody ab81366

1 图像

概述

产品名称	Anti-LMF2抗体
描述	兔多克隆抗体to LMF2
经测试应用	适用于: WB, ELISA
种属反应性	与反应: Human 预测可用于: Mouse, Rat, Rabbit, Horse, Guinea pig, Cow, Cat, Dog, Zebrafish
免疫原	Synthetic peptide: YSYVEPGTHG RLWTGAHRLF GAVEHLQLAN SYGLFRRMTG LGGRPEVVLE, corresponding to internal sequence amino acids 397-446 of Human LMF2 (NP_149977) Run BLAST with ExPASy Run BLAST with NCBI
阳性对照	HeLa cell lysate

性能

形式	Liquid
存放说明	Shipped at 4°C. Upon delivery aliquot and store at -20°C. Avoid freeze / thaw cycles.
存储溶液	Preservative: None Constituents: 2% Sucrose, PBS
纯度	Immunogen affinity purified
克隆	多克隆
同种型	IgG

应用

Our [Abpromise guarantee](#) covers the use of **ab81366** in the following tested applications.

The application notes include recommended starting dilutions; optimal dilutions/concentrations should be determined by the end user.

应用	Ab评论	说明
WB		Use a concentration of 1 µg/ml. Predicted molecular weight: 80 kDa. Good results were obtained when blocked with 5% non-fat dry milk in 0.05% PBS-T.

应用	Ab评论	说明
----	------	----

ELISA Use at an assay dependent concentration.
Titre using peptide based assay: 1/62500.

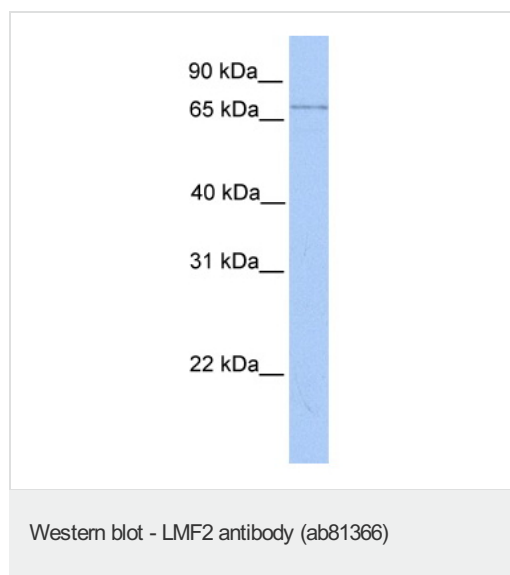
靶标

功能 Involved in the maturation of specific proteins in the endoplasmic reticulum. May be required for maturation and transport of active lipoprotein lipase (LPL) through the secretory pathway.

序列相似性 Belongs to the lipase maturation factor family.

细胞定位 Endoplasmic reticulum membrane.

图片



Anti-LMF2 antibody (ab81366) at 1 µg/ml (in 5% skim milk / PBS buffer) + HeLa cell lysate at 10 µg

Secondary

HRP conjugated anti-Rabbit IgG at 1/50000 dilution

Predicted band size : 80 kDa

Observed band size : 75 kDa

Please note: All products are "FOR RESEARCH USE ONLY AND ARE NOT INTENDED FOR DIAGNOSTIC OR THERAPEUTIC USE"

Our Abpromise to you: Quality guaranteed and expert technical support

- Replacement or refund for products not performing as stated on the datasheet
- Valid for 12 months from date of delivery
- Response to your inquiry within 24 hours
- We provide support in Chinese, English, French, German, Japanese and Spanish
- Extensive multi-media technical resources to help you
- We investigate all quality concerns to ensure our products perform to the highest standards

If the product does not perform as described on this datasheet, we will offer a refund or replacement. For full details of the Abpromise, please visit <http://www.abcam.cn/abpromise> or contact our technical team.

Terms and conditions

- Guarantee only valid for products bought direct from Abcam or one of our authorized distributors