

## Product datasheet

# Anti-MCM3 antibody ab80456

### 2 图像

#### 概述

<b>产品名称</b>	Anti-MCM3抗体
<b>描述</b>	兔多克隆抗体to MCM3
<b>经测试应用</b>	<b>适用于:</b> IHC-P, WB, ELISA
<b>种属反应性</b>	<b>与反应:</b> Human <b>预测可用于:</b> Mouse, Rat, Rabbit, Horse, Guinea pig, Cow, Cat, Dog
<b>免疫原</b>	Synthetic peptide: LVQYAYFKKV LEKEKKRKKR SEDESETEDE EEKSQEDQEQ KRKRRKTRQP , corresponding to C terminal amino acids 649-698 of Human MCM3 <a href="#">Run BLAST with ExPASy</a> <a href="#">Run BLAST with NCBI</a>
<b>阳性对照</b>	721_B cell lysate

#### 性能

<b>形式</b>	Liquid
<b>存放说明</b>	Shipped at 4°C. Upon delivery aliquot and store at -20°C or -80°C. Avoid repeated freeze / thaw cycles.
<b>存储溶液</b>	Preservative: None Constituents: 2% Sucrose, PBS
<b>纯度</b>	Immunogen affinity purified
<b>克隆</b>	多克隆
<b>同种型</b>	IgG

#### 应用

Our [Abpromise guarantee](#) covers the use of **ab80456** in the following tested applications.

The application notes include recommended starting dilutions; optimal dilutions/concentrations should be determined by the end user.

应用	Ab 评论	说明
IHC-P		Use a concentration of 5 µg/ml.

应用	Ab 评论	说明
----	-------	----

WB Use a concentration of 1 µg/ml. Detects a band of approximately 39, 55, 90 kDa (predicted molecular weight: 90 kDa). Good results were obtained when blocked with 5% non-fat dry milk in 0.05% PBS-T.

ELISA Use at an assay dependent concentration.  
ELISA titre using peptide based assay 1/312500.

## 靶标

### 功能

Acts as component of the MCM2-7 complex (MCM complex) which is the putative replicative helicase essential for 'once per cell cycle' DNA replication initiation and elongation in eukaryotic cells. The active ATPase sites in the MCM2-7 ring are formed through the interaction surfaces of two neighboring subunits such that a critical structure of a conserved arginine finger motif is provided in trans relative to the ATP-binding site of the Walker A box of the adjacent subunit. The six ATPase active sites, however, are likely to contribute differentially to the complex helicase activity. Required for DNA replication and cell proliferation.

### 序列相似性

Belongs to the MCM family.  
Contains 1 MCM domain.

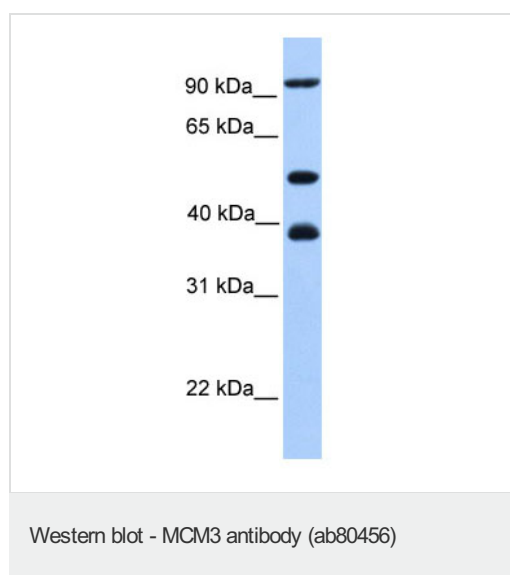
### 翻译后修饰

Phosphorylated upon DNA damage, probably by ATM or ATR.

### 细胞定位

Nucleus.

## 图片



Anti-MCM3 antibody (ab80456) at 1 µg/ml +  
721\_B cell lysate at 10 µg

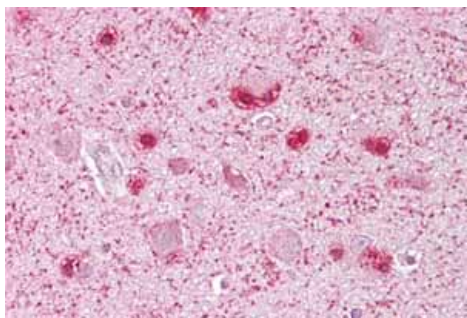
### Secondary

HRP conjugated anti-Rabbit IgG at 1/50000  
dilution

**Predicted band size :** 90 kDa

**Observed band size :** 90 kDa

**Additional bands at :** 39 kDa, 55 kDa. We are unsure as to the identity of these extra bands.



Immunohistochemistry of Brain, cortex tissue at an antibody concentration of 5µg/ml using anti-MCM3 antibody (ab80456)

Immunohistochemistry (Formalin/PFA-fixed paraffin-embedded sections)-Anti-MCM3 antibody(ab80456)

**Please note:** All products are "FOR RESEARCH USE ONLY AND ARE NOT INTENDED FOR DIAGNOSTIC OR THERAPEUTIC USE"

### **Our Abpromise to you: Quality guaranteed and expert technical support**

- Replacement or refund for products not performing as stated on the datasheet
- Valid for 12 months from date of delivery
- Response to your inquiry within 24 hours
- We provide support in Chinese, English, French, German, Japanese and Spanish
- Extensive multi-media technical resources to help you
- We investigate all quality concerns to ensure our products perform to the highest standards

If the product does not perform as described on this datasheet, we will offer a refund or replacement. For full details of the Abpromise, please visit <http://www.abcam.cn/abpromise> or contact our technical team.

### **Terms and conditions**

- Guarantee only valid for products bought direct from Abcam or one of our authorized distributors