


Product datasheet

Anti-PAK1 antibody ab79218

2 图像

概述

产品名称	Anti-PAK1抗体
描述	兔多克隆抗体to PAK1
特异性	Detects endogenous levels of total PAK1.
经测试应用	适用于: WB, IHC-P, ICC/IF, ELISA
种属反应性	与反应: Human 预测可用于: Mouse, Rat 
免疫原	Synthetic non-phosphopeptide derived from Human PAK1 around the phosphorylation site of serine 199 (T-K-S-V-Y)
阳性对照	K562 cells extracts; Human placenta tissue.

性能

形式	Liquid
存放说明	Shipped at 4°C. Store at -20°C. Stable for 12 months at -20°C.
存储溶液	Preservative: 0.02% Sodium Azide Constituents: 50% Glycerol, PBS (without Mg ²⁺ and Ca ²⁺), 150mM Sodium chloride, pH 7.4
纯度	Immunogen affinity purified
克隆	多克隆
同种型	IgG

应用

Our [Abpromise guarantee](#) covers the use of **ab79218** in the following tested applications.

The application notes include recommended starting dilutions; optimal dilutions/concentrations should be determined by the end user.

应用	Ab评论	说明
WB		1/500 - 1/1000. Predicted molecular weight: 61 kDa.
IHC-P		1/50 - 1/100.

应用	Ab评论	说明
ICC/IF		1/500 - 1/1000.
ELISA		1/10000.

靶标

功能

The activated kinase acts on a variety of targets. Likely to be the GTPase effector that links the Rho-related GTPases to the JNK MAP kinase pathway. Activated by CDC42 and RAC1. Involved in dissolution of stress fibers and reorganization of focal complexes. Involved in regulation of microtubule biogenesis through phosphorylation of TBCB. Activity is inhibited in cells undergoing apoptosis, potentially due to binding of CDC2L1 and CDC2L2.

序列相似性

Belongs to the protein kinase superfamily. STE Ser/Thr protein kinase family. STE20 subfamily. Contains 1 CRIB domain.
Contains 1 protein kinase domain.

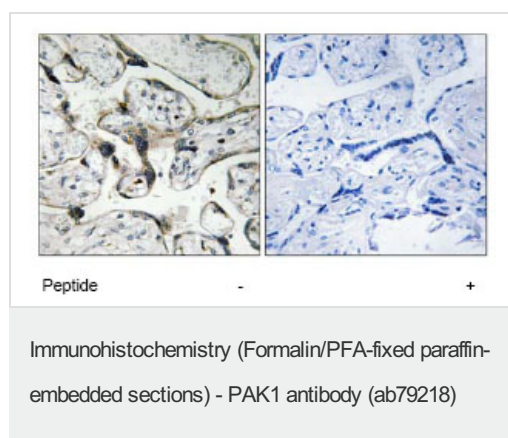
翻译后修饰

Autophosphorylated when activated by CDC42/p21 and RAC1.

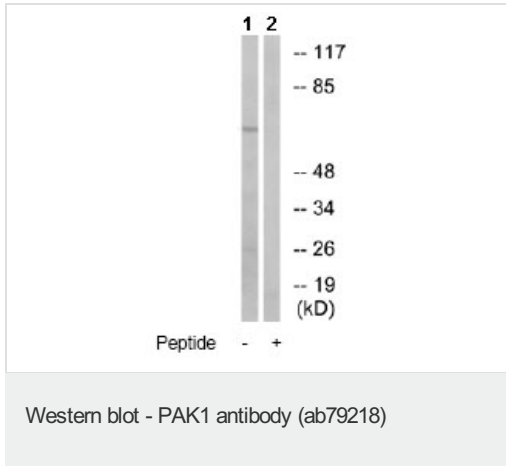
细胞定位

Cytoplasm. Cell junction > focal adhesion. Recruited to focal adhesions upon activation.

图片



Left panel: immunohistochemistry analysis of paraffin-embedded Human placenta tissue using 1/50 ab79218; Right panel: same, after pre-incubation with the immunizing peptide.



All lanes : Anti-PAK1 antibody (ab79218) at 1/500 dilution

Lane 1 : K562 cells extract

Lane 2 : K562 cells extract with immunizing peptide at 10 µg

Lysates/proteins at 30 µg per lane.

Predicted band size : 61 kDa

Observed band size : 61 kDa

Please note: All products are "FOR RESEARCH USE ONLY AND ARE NOT INTENDED FOR DIAGNOSTIC OR THERAPEUTIC USE"

Our Abpromise to you: Quality guaranteed and expert technical support

- Replacement or refund for products not performing as stated on the datasheet
- Valid for 12 months from date of delivery
- Response to your inquiry within 24 hours
- We provide support in Chinese, English, French, German, Japanese and Spanish
- Extensive multi-media technical resources to help you
- We investigate all quality concerns to ensure our products perform to the highest standards

If the product does not perform as described on this datasheet, we will offer a refund or replacement. For full details of the Abpromise, please visit <http://www.abcam.cn/abpromise> or contact our technical team.

Terms and conditions

- Guarantee only valid for products bought direct from Abcam or one of our authorized distributors