

Product datasheet

Anti-GPCR GPR100 antibody ab79155

1 References 2 图像

概述

产品名称	Anti-GPCR GPR100抗体
描述	兔多克隆抗体to GPCR GPR100
宿主	Rabbit
经测试应用	适用于: ELISA, WB, ICC/IF
种属反应性	与反应: Human
免疫原	Synthetic peptide derived from the C terminal of Human GPCR GPR100
阳性对照	A549 cells.

性能

形式	Liquid
存放说明	Shipped at 4°C. Upon delivery aliquot and store at -20°C. Avoid freeze / thaw cycles.
存储溶液	Preservative: 0.02% Sodium Azide Constituents: 50% Glycerol, PBS, 150mM Sodium chloride, pH 7.4
纯度	Immunogen affinity purified
克隆	多克隆
同种型	IgG

应用

Our [Abpromise guarantee](#) covers the use of **ab79155** in the following tested applications.

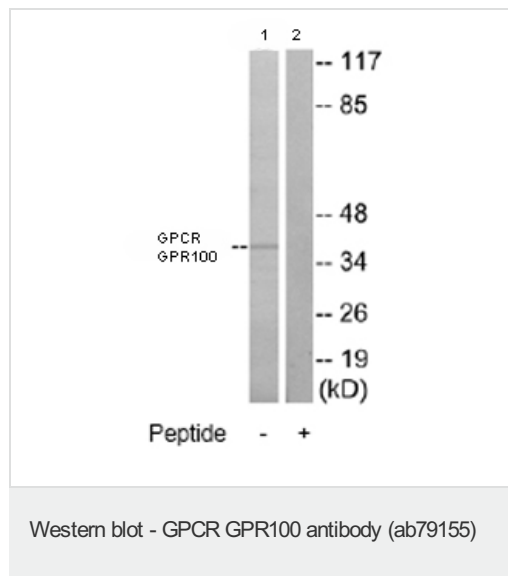
The application notes include recommended starting dilutions; optimal dilutions/concentrations should be determined by the end user.

应用	Ab评论	说明
ELISA		1/5000.
WB		1/500 - 1/1000. Detects a band of approximately 41 kDa (predicted molecular weight: 41 kDa).
ICC/IF		1/500 - 1/1000.

靶标

功能	High affinity receptor for INSL5. Also acts as receptor for RLN3/relaxin-3, as well as bradykinin and kallidin. Binding of the ligand inhibit cAMP accumulation.
组织特异性	Expressed in a broader range of tissues including brain, kidney, testis, thymus, placenta, prostate, salivary gland, thyroid and colon.
序列相似性	Belongs to the G-protein coupled receptor 1 family.
细胞定位	Cell membrane.

图片



All lanes : Anti-GPCR GPR100 antibody (ab79155) at 1/500 dilution

Lane 1 : Extracts from A549 cells

Lane 2 : Extracts from A549 cells with immunizing peptide at 5 μ g

Lysates/proteins at 15 μ g per lane.

Predicted band size: 41 kDa

Observed band size: 41 kDa



Left panel: immunofluorescence analysis of A549 cells using ab79155 at a 1/500 dilution.

Right panel: same, after pre-incubation with the immunizing peptide.

Please note: All products are "FOR RESEARCH USE ONLY AND ARE NOT INTENDED FOR DIAGNOSTIC OR THERAPEUTIC USE"

Our Abpromise to you: Quality guaranteed and expert technical support

- Replacement or refund for products not performing as stated on the datasheet
- Valid for 12 months from date of delivery
- Response to your inquiry within 24 hours

- We provide support in Chinese, English, French, German, Japanese and Spanish
- Extensive multi-media technical resources to help you
- We investigate all quality concerns to ensure our products perform to the highest standards

If the product does not perform as described on this datasheet, we will offer a refund or replacement. For full details of the Abpromise, please visit <http://www.abcam.cn/abpromise> or contact our technical team.

Terms and conditions

- Guarantee only valid for products bought direct from Abcam or one of our authorized distributors