

## Product datasheet

# Anti-BVES antibody ab77639

### 2 图像

#### 概述

产品名称	Anti-BVES抗体
描述	小鼠单克隆抗体to BVES
宿主	Mouse
经测试应用	适用于: WB, ELISA
种属反应性	与反应: Mouse, Rat, Human
免疫原	Recombinant fragment: YSLNDPTLND KKAKKLEHQL SLCTQISMLE MRNSIASSSD SDDGLHQFLR GTSSMSSLHV SSPHQRASAK MKPIEEGAED DDDVFEFASP NTLKVHQLP, corresponding to amino acids 262-360 of human BVES (NP_009004) with a 26 kDa tag. <a href="#">Run BLAST with ExPASy</a> <a href="#">Run BLAST with NCBI</a>
阳性对照	IMR-32 cell lysate; recombinant tagged fragment of human BVES.

#### 性能

形式	Liquid
存放说明	Shipped at 4°C. Upon delivery aliquot and store at -20°C. Avoid repeated freeze / thaw cycles.
存储溶液	Preservative: None Constituents: 1X PBS, pH 7.2
纯度	Protein A purified
克隆	单克隆
同种型	IgG2a
轻链类型	kappa

#### 应用

Our [Abpromise guarantee](#) covers the use of **ab77639** in the following tested applications.

The application notes include recommended starting dilutions; optimal dilutions/concentrations should be determined by the end user.

应用	Ab评论	说明
WB		1/500 - 1/1000. Predicted molecular weight: 41 kDa.

应用	Ab评论	说明
ELISA		Use at an assay dependent dilution.

## 靶标

### 功能

Cell adhesion molecule involved in the establishment and/or maintenance of cell integrity. Involved in the formation and regulation of the tight junction (TJ) paracellular permeability barrier in epithelial cells. Plays a role in VAMP3-mediated vesicular transport and recycling of different receptor molecules through its interaction with VAMP3. Plays a role in the regulation of cell shape and movement by modulating the Rho-family GTPase activity through its interaction with ARHGEF25/GEFT. Induces primordial adhesive contact and aggregation of epithelial cells in a Ca(2+)-independent manner. Also involved in striated muscle regeneration and repair and in the regulation of cell spreading.

### 组织特异性

Expressed in epithelial cells (at protein level). Expressed in fetal and adult heart and skeletal muscle.

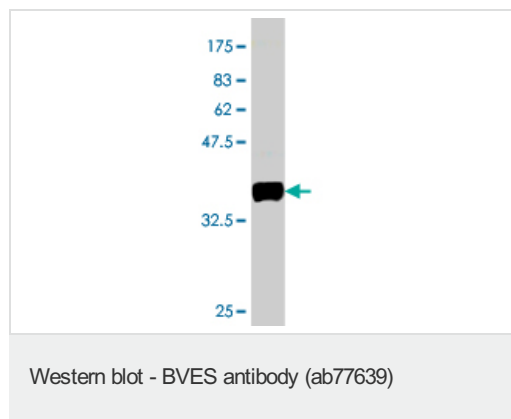
### 序列相似性

Belongs to the popeye family.

### 细胞定位

Lateral cell membrane. Cell junction > tight junction. Membrane. Colocalizes with VAMP3 at the cell-cell contact in cardiac and skeletal muscle (By similarity). Its movement from the cytoplasm to membrane is an early event occurring concurrently with cell-cell contact. Colocalizes in epithelial cells with OCLN and TJP1 in an apical-lateral position within the z axis. Detected at cell-cell contact but never observed at the free surface of epithelial cells.

## 图片



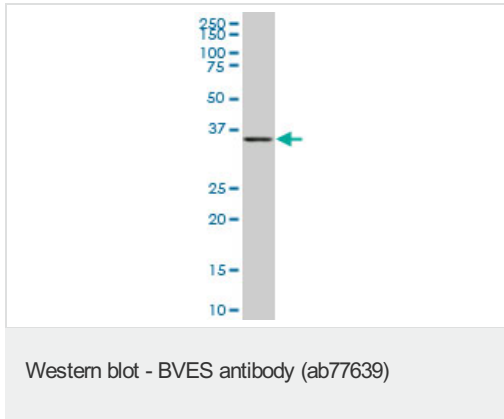
Anti-BVES antibody (ab77639) at 1/500 dilution + Recombinant tagged fragment of human BVES (the immunogen) at 0.2 µg

### Secondary

Goat anti-Mouse IgG (H&L)-HRP at 1/5000 dilution

**Predicted band size:** 41 kDa

**Observed band size:** 37 kDa



Anti-BVES antibody (ab77639) at 1/500  
dilution + IMR-32 cell lysate at 25 µg

#### Secondary

Goat anti-Mouse IgG (H&L)-HRP at 1/2500  
dilution

**Predicted band size:** 41 kDa

**Observed band size:** 41 kDa

**Please note:** All products are "FOR RESEARCH USE ONLY AND ARE NOT INTENDED FOR DIAGNOSTIC OR THERAPEUTIC USE"

### Our Abpromise to you: Quality guaranteed and expert technical support

- Replacement or refund for products not performing as stated on the datasheet
- Valid for 12 months from date of delivery
- Response to your inquiry within 24 hours
- We provide support in Chinese, English, French, German, Japanese and Spanish
- Extensive multi-media technical resources to help you
- We investigate all quality concerns to ensure our products perform to the highest standards

If the product does not perform as described on this datasheet, we will offer a refund or replacement. For full details of the Abpromise, please visit <http://www.abcam.cn/abpromise> or contact our technical team.

### Terms and conditions

- Guarantee only valid for products bought direct from Abcam or one of our authorized distributors