

Product datasheet

Anti-WBP2 antibody ab76680

1 图像

概述

产品名称	Anti-WBP2抗体
描述	兔多克隆抗体to WBP2
经测试应用	适用于: WB, ELISA
种属反应性	与反应: Human
免疫原	KLH conjugated synthetic peptide selected from the N terminal region of human WBP2.
阳性对照	A2058 cell line lysate

性能

形式	Liquid
存放说明	Shipped at 4°C. Upon delivery aliquot and store at -20°C or -80°C. Avoid repeated freeze / thaw cycles.
存储溶液	Preservative: 0.09% Sodium Azide Constituents: PBS
纯度	Ammonium Sulphate Precipitation
纯化说明	This antibody is prepared by Saturated Ammonium Sulfate precipitation followed by dialysis against PBS.
克隆	多克隆
同种型	IgG

应用

Our [Abpromise guarantee](#) covers the use of **ab76680** in the following tested applications.

The application notes include recommended starting dilutions; optimal dilutions/concentrations should be determined by the end user.

应用	Ab评论	说明
WB		1/50 - 1/100. Predicted molecular weight: 28 kDa.
ELISA		1/1000.

靶标

组织特异性

Ubiquitous.

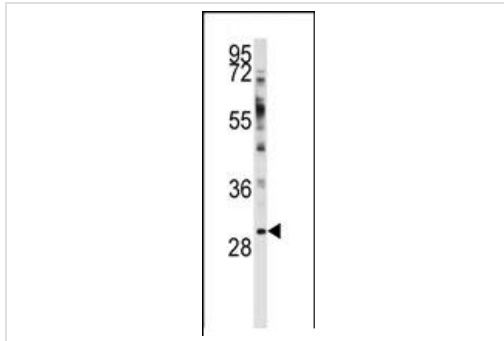
序列相似性

Contains 1 GRAM domain.

结构域

The WW-binding 1 motif mediates interaction with NEDD4.

图片



Western blot - WBP2 antibody (ab76680)

Anti-WBP2 antibody (ab76680) at 1/50 dilution + A2058 cell line lysate at 35 µg

Predicted band size : 28 kDa

Observed band size : 30 kDa

Please note: All products are "FOR RESEARCH USE ONLY AND ARE NOT INTENDED FOR DIAGNOSTIC OR THERAPEUTIC USE"

Our Abpromise to you: Quality guaranteed and expert technical support

- Replacement or refund for products not performing as stated on the datasheet
- Valid for 12 months from date of delivery
- Response to your inquiry within 24 hours
- We provide support in Chinese, English, French, German, Japanese and Spanish
- Extensive multi-media technical resources to help you
- We investigate all quality concerns to ensure our products perform to the highest standards

If the product does not perform as described on this datasheet, we will offer a refund or replacement. For full details of the Abpromise, please visit <http://www.abcam.cn/abpromise> or contact our technical team.

Terms and conditions

- Guarantee only valid for products bought direct from Abcam or one of our authorized distributors