

Product datasheet

Anti-IgA antibody, prediluted ab75671

1 图像

概述

产品名称	Anti-IgA抗体, prediluted
描述	兔多克隆抗体到 IgA, prediluted
宿主	Rabbit
特异性	This antibody recognizes a protein of 50kDa, identified as alpha heavy chain of human immunoglobulins. It reacts with both IgA1 and IgA2 isotypes. It does not cross-react with gamma (IgG), mu (IgM), epsilon (IgE), or delta (IgD), heavy chains, T-cells, monocytes, granulocytes, or erythrocytes.
经测试应用	适用于: IHC-P
种属反应性	与反应: Human
免疫原	Full length IgA isolated from a pool of normal human sera.
阳性对照	Human Tonsil tissue.
常规说明	This antibody is useful in the identification of leukemias, plasmacytomas and certain non-Hodgkin's lymphomas.

性能

形式	Prediluted
存放说明	Shipped at 4°C. Store at +4°C.
存储溶液	Preservative: 15mM Sodium Azide Constituents: 0.5 mol/L Tris HCl, pH 7.6, and a stabilizing protein.
纯度	Protein A purified
Primary antibody说明	This antibody is useful in the identification of leukemias, plasmacytomas and certain non-Hodgkin's lymphomas.
克隆	多克隆
同种型	IgG

应用

Our [Abpromise guarantee](#) covers the use of **ab75671** in the following tested applications.

The application notes include recommended starting dilutions; optimal dilutions/concentrations should be determined by the end user.

应用	Ab评论	说明
IHC-P		1/1. Perform heat mediated antigen retrieval before commencing with IHC staining protocol. Ready to use.

靶标

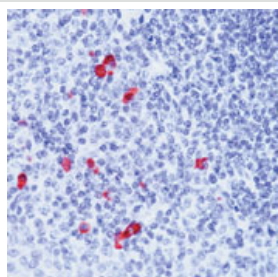
相关性

Human IgA (immunoglobulin A) is a glycosylated protein of 160 kDa and is produced as a monomer or as a J chain linked dimer. Monomeric IgA constitutes 5-15 % of the serum immunoglobulins whereas dimeric IgA is localized to mucosa surfaces such as saliva, gastrointestinal secretion, bronchial fluids and milk. Mucosal IgA plays a major role in host defence by neutralising infectious agents at mucosal surfaces. The production is usually local and antigen specific IgA producing B cells can be found in regions under the lamina propria where they mature into dimeric IgA producing plasma cells. IgA deficiency is the most common immunodeficiency that may affect both serum and mucosal produced IgA. OR: The secretory component is a component of immunoglobulin A (IgA) which consists of a portion of the polymeric immunoglobulin receptor. Polymeric IgA binds to the polymeric immunoglobulin receptor on the basolateral surface of epithelial cells and is taken up into the cell via transcytosis. The receptor-IgA complex passes through the cellular compartments before being secreted on the luminal surface of the epithelial cells, still attached to the receptor. Proteolysis of the receptor occurs and the dimeric IgA molecule, along with the secretory component, are free to diffuse throughout the lumen.

细胞定位

Secreted

图片



Formalin-fixed, paraffin-embedded human tonsil stained with ab75671, using peroxidase-conjugate and AEC chromogen. Note cytoplasmic staining of IgA-secreting cells.

Immunohistochemistry (Formalin/PFA-fixed paraffin-embedded sections) - IgA antibody, prediluted (ab75671)

Please note: All products are "FOR RESEARCH USE ONLY AND ARE NOT INTENDED FOR DIAGNOSTIC OR THERAPEUTIC USE"

Our Abpromise to you: Quality guaranteed and expert technical support

- Replacement or refund for products not performing as stated on the datasheet
- Valid for 12 months from date of delivery

- Response to your inquiry within 24 hours
- We provide support in Chinese, English, French, German, Japanese and Spanish
- Extensive multi-media technical resources to help you
- We investigate all quality concerns to ensure our products perform to the highest standards

If the product does not perform as described on this datasheet, we will offer a refund or replacement. For full details of the Abpromise, please visit <http://www.abcam.cn/abpromise> or contact our technical team.

Terms and conditions

- Guarantee only valid for products bought direct from Abcam or one of our authorized distributors