

Product datasheet

Anti-IgA Secretory Component antibody [COMPO2], prediluted ab75232

1 图像

概述

产品名称	Anti-IgA Secretory Component抗体[COMPO2], prediluted
描述	小鼠单克隆抗体[COMPO2] to IgA Secretory Component, prediluted
宿主	Mouse
特异性	ab75232 Secretory Component is an epithelial transport receptor for polymeric IgA and IgM. Antibody to secretory component has been shown to be useful for identifying glandular carcinomas.
经测试应用	适用于: IHC-P
种属反应性	与反应: Rat, Human
免疫原	Full length native protein (purified) corresponding to Human IgA Secretory Component. Semi-purified human secretory component.
阳性对照	Stomach, small intestine, colon carcinoma.
常规说明	Clone designation COMPO2 is the same as SC-05.

性能

形式	Prediluted
存放说明	Shipped at 4°C. Store at +4°C.
存储溶液	Preservative: 15mM Sodium Azide Constituents: 0.5M Tris HCl, stabilizing protein, pH 7.6
纯度	Protein G purified
克隆	单克隆
克隆编号	COMPO2
同种型	IgG1

应用

Our [Abpromise guarantee](#) covers the use of **ab75232** in the following tested applications.

The application notes include recommended starting dilutions; optimal dilutions/concentrations should be determined by the end user.

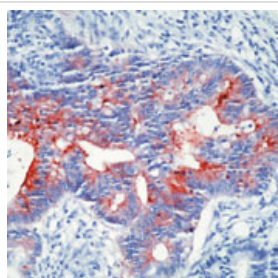
应用	Ab评论	说明
IHC-P		1/1.

靶标

相关性

IgA has two subclasses (IgA1 and IgA2) and can be produced as a monomeric as well as a dimeric form. The IgA dimeric form is the most prevalent and is also called secretory IgA (sIgA). The secretory component of sIgA protects the immunoglobulin from being degraded by proteolytic enzymes, thus sIgA can survive in the harsh gastrointestinal tract environment and provide protection against microbes that multiply in body secretions. sIgA can also inhibit inflammatory effects of other immunoglobulins. Secretory component is a proteolytic cleavage product of the polymeric immunoglobulin receptor which remains associated with dimeric IgA in sero-mucus secretions. Polymeric IgA binds to the polymeric immunoglobulin receptor on the basolateral surface of epithelial cells and is taken up into the cell via transcytosis. The receptor-IgA complex passes through the cellular compartments before being secreted on the luminal surface of the epithelial cells, still attached to the receptor. Proteolysis of the receptor occurs and the dimeric IgA molecule, along with the secretory component, are free to diffuse throughout the lumen. Secretory components wrap around two IgA units joined by a J chain protein fragment, resulting in a Y-shaped configuration, with each of the two antigen binding regions of the two constituent Y-shaped antibodies exposed. One identified function of secretory components is to protect IgA antibodies from degradation by the gastric acids and enzymes of the digestive system. This property is especially important in the transfer of immune system components during breastfeeding.

图片



Formalin-fixed, paraffin-embedded human colon carcinoma stained with ab75232, using peroxidase-conjugate and AEC chromogen. Note cytoplasmic staining of tumor cells.

Immunohistochemistry (Formalin/PFA-fixed paraffin-embedded sections) - Anti-IgA Secretory Component antibody [COMPO2], prediluted (ab75232)

Please note: All products are "FOR RESEARCH USE ONLY AND ARE NOT INTENDED FOR DIAGNOSTIC OR THERAPEUTIC USE"

Our Abpromise to you: Quality guaranteed and expert technical support

- Replacement or refund for products not performing as stated on the datasheet

- Valid for 12 months from date of delivery
- Response to your inquiry within 24 hours

- We provide support in Chinese, English, French, German, Japanese and Spanish
- Extensive multi-media technical resources to help you
- We investigate all quality concerns to ensure our products perform to the highest standards

If the product does not perform as described on this datasheet, we will offer a refund or replacement. For full details of the Abpromise, please visit <http://www.abcam.cn/abpromise> or contact our technical team.

Terms and conditions

- Guarantee only valid for products bought direct from Abcam or one of our authorized distributors