

Product datasheet

Anti-Prolactin Receptor antibody [B6.2], prediluted ab74608

1 图像

概述

产品名称	Anti-Prolactin Receptor抗体[B6.2], prediluted
描述	小鼠单克隆抗体[B6.2] to Prolactin Receptor, prediluted
宿主	Mouse
经测试应用	适用于: IHC-P
种属反应性	与反应: Human
免疫原	Semi-purified human prolactin receptor.
阳性对照	Human breast carcinoma tissue.

性能

形式	Prediluted
存放说明	Shipped at 4°C. Store at +4°C.
纯度	Protein G purified
纯化说明	ab74608 was purified from ascites
克隆	单克隆
克隆编号	B6.2
同种型	IgG1

应用

Our [Abpromise guarantee](#) covers the use of **ab74608** in the following tested applications.

The application notes include recommended starting dilutions; optimal dilutions/concentrations should be determined by the end user.

应用	Ab评论	说明
----	------	----

IHC-P

应用说明	IHC-P: Ready to use. Staining of formalin/paraffin tissues requires digestion of tissue sections with pepsin at 1mg/ml Tris-HCl, pH 2.0 for 15 min at RT or 10 min at 37C.
------	---

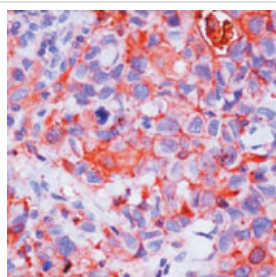
Not yet tested in other applications.

Optimal dilutions/concentrations should be determined by the end user.

靶标

功能	This is a receptor for the anterior pituitary hormone prolactin (PRL). Isoform 4 is unable to transduce prolactin signaling. Isoform 6 is unable to transduce prolactin signaling.
组织特异性	Expressed in breast, placenta, kidney, liver and pancreas.
序列相似性	Belongs to the type I cytokine receptor family. Type 1 subfamily. Contains 2 fibronectin type-III domains.
结构域	The WSXWS motif appears to be necessary for proper protein folding and thereby efficient intracellular transport and cell-surface receptor binding. The box 1 motif is required for JAK interaction and/or activation.
细胞定位	Secreted and Membrane.

图片



Prolactin receptor at 1 ug/ml in human breast carcinoma by Immunohistochemistry, Formalin-fixed, Paraffin-embedded tissue using peroxidase-conjugate and AEC chromogen. Note cell membrane and cytoplasmic staining of tumor cells.

Immunohistochemistry (Formalin/PFA-fixed paraffin-embedded sections) - Prolactin Receptor antibody [B6.2], prediluted (ab74608)

Please note: All products are "FOR RESEARCH USE ONLY AND ARE NOT INTENDED FOR DIAGNOSTIC OR THERAPEUTIC USE"

Our Abpromise to you: Quality guaranteed and expert technical support

- Replacement or refund for products not performing as stated on the datasheet
- Valid for 12 months from date of delivery
- Response to your inquiry within 24 hours
- We provide support in Chinese, English, French, German, Japanese and Spanish
- Extensive multi-media technical resources to help you
- We investigate all quality concerns to ensure our products perform to the highest standards

If the product does not perform as described on this datasheet, we will offer a refund or replacement. For full details of the Abpromise, please visit <http://www.abcam.cn/abpromise> or contact our technical team.

Terms and conditions

- Guarantee only valid for products bought direct from Abcam or one of our authorized distributors