


Product datasheet

Anti-LEF1 (phospho S42) antibody ab74067

1 图像

概述

产品名称	Anti-LEF1 (phospho S42)抗体
描述	兔多克隆抗体to LEF1 (phospho S42)
特异性	ab74067 detects endogenous levels of LEF1 only when phosphorylated at serine 42.
经测试应用	适用于: WB, ELISA
种属反应性	与反应: Human 预测可用于: Mouse 
免疫原	Synthetic phosphopeptide derived from human LEF1 around the phosphorylation site of serine 42 (E-I-S ^P -H-P).
阳性对照	293 cell extracts treated with paclitaxel (1uM, 24hours).

性能

形式	Liquid
存放说明	Shipped at 4°C. Upon delivery aliquot and store at -20°C. Avoid freeze / thaw cycles.
存储溶液	Preservative: 0.02% Sodium Azide Constituents: 50% Glycerol, PBS (without Mg ²⁺ and Ca ²⁺), 150mM Sodium chloride, pH 7.4
纯度	Immunogen affinity purified
纯化说明	The antibody against non-phosphopeptide was removed by chromatography using non-phosphopeptide corresponding to the phosphorylation site.
克隆	多克隆
同种型	IgG

应用

Our [Abpromise guarantee](#) covers the use of **ab74067** in the following tested applications.

The application notes include recommended starting dilutions; optimal dilutions/concentrations should be determined by the end user.

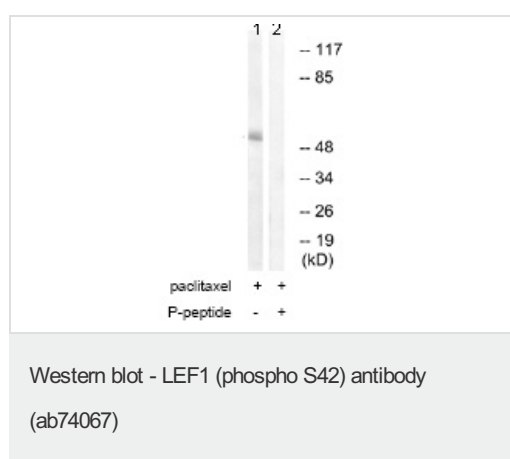
应用	Ab评论	说明
WB		1/500 - 1/1000. Detects a band of approximately 44 kDa (predicted molecular weight: 44 kDa).

应用	Ab评论	说明
ELISA		1/20000.

靶标

功能	Participates in the Wnt signaling pathway. Activates transcription of target genes in the presence of CTNNB1 and EP300. May play a role in hair cell differentiation and follicle morphogenesis. TLE1, TLE2, TLE3 and TLE4 repress transactivation mediated by LEF1 and CTNNB1. Regulates T-cell receptor alpha enhancer function. Binds DNA in a sequence-specific manner. PIAG antagonizes both Wnt-dependent and Wnt-independent activation by LEF1 (By similarity). Isoform 3 lacks the CTNNB1 interaction domain and may be an antagonist for Wnt signaling. Isoform 5 transcriptionally activates the fibronectin promoter, binds to and represses transcription from the E-cadherin promoter in a CTNNB1-independent manner, and is involved in reducing cellular aggregation and increasing cell migration of pancreatic cancer cells. Isoform 1 transcriptionally activates MYC and CCND1 expression and enhances proliferation of pancreatic tumor cells.
组织特异性	Detected in thymus. Not detected in normal colon, but highly expressed in colon cancer biopsies and colon cancer cell lines. Expressed in several pancreatic tumors and weakly expressed in normal pancreatic tissue. Isoforms 1 and 5 are detected in several pancreatic cell lines.
序列相似性	Belongs to the TCF/LEF family. Contains 1 HMG box DNA-binding domain.
结构域	Proline-rich and acidic regions are implicated in the activation functions of RNA polymerase II transcription factors.
细胞定位	Nucleus. Found in nuclear bodies upon PIASG binding.

图片



All lanes : Anti-LEF1 (phospho S42) antibody (ab74067) at 1/500 dilution

Lane 1 : 293 cell extracts treated with paclitaxel (1 uM, 24hours)

Lane 2 : 293 cell extracts treated with paclitaxel (1 uM, 24hours) with immunising peptide at 10 µg

Lysates/proteins at 30 µg per lane.

Predicted band size : 44 kDa

Observed band size : 44 kDa

Our Abpromise to you: Quality guaranteed and expert technical support

- Replacement or refund for products not performing as stated on the datasheet
- Valid for 12 months from date of delivery
- Response to your inquiry within 24 hours

- We provide support in Chinese, English, French, German, Japanese and Spanish
- Extensive multi-media technical resources to help you
- We investigate all quality concerns to ensure our products perform to the highest standards

If the product does not perform as described on this datasheet, we will offer a refund or replacement. For full details of the Abpromise, please visit <http://www.abcam.cn/abpromise> or contact our technical team.

Terms and conditions

- Guarantee only valid for products bought direct from Abcam or one of our authorized distributors