


Product datasheet

Anti-FOXB1 + FOXB2 antibody ab72877

1 图像

概述

产品名称	Anti-FOXB1 + FOXB2抗体
描述	兔多克隆抗体to FOXB1 + FOXB2
特异性	ab72877 detects endogenous levels of total FOXB1 + FOXB2 protein.
经测试应用	适用于: WB, ELISA
种属反应性	与反应: Human 预测可用于: Mouse 
免疫原	Synthetic peptide derived from an internal sequence of human FOXB1 + FOXB2
阳性对照	293 cell extracts.

性能

形式	Liquid
存放说明	Shipped at 4°C. Store at -20°C. Stable for 12 months at -20°C.
存储溶液	Preservative: 0.02% Sodium Azide Constituents: 50% Glycerol, PBS (without Mg ²⁺ and Ca ²⁺), 150mM Sodium chloride, pH 7.4
纯度	Immunogen affinity purified
纯化说明	ab72877 was affinity-purified from rabbit antiserum by affinity-chromatography using epitope-specific immunogen.
克隆	多克隆
同种型	IgG

应用

Our [Abpromise guarantee](#) covers the use of **ab72877** in the following tested applications.

The application notes include recommended starting dilutions; optimal dilutions/concentrations should be determined by the end user.

应用	Ab评论	说明
WB		
ELISA		

应用说明

ELISA: 1/20000.

WB: 1/500 - 1/1000. Detects bands of approximately 35 and 45 kDa (predicted molecular weights: 35 and 45 kDa).

Not yet tested in other applications.

Optimal dilutions/concentrations should be determined by the end user.

靶标

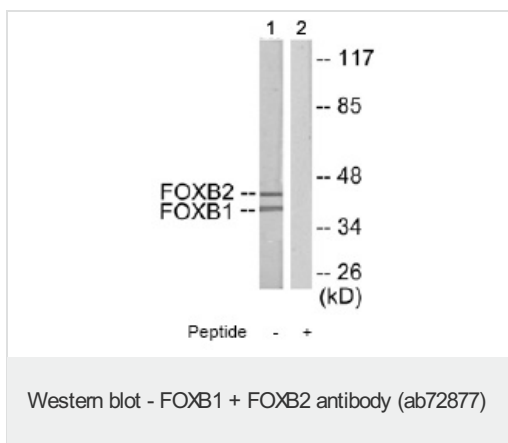
相关性

FOXB1 and FOXB2 are winged helix/forkhead transcription factors. FOXB1 is specifically expressed in the developing central nervous system (CNS). Early embryonic FOXB1 expression is restricted to the mammillary body region of the caudal hypothalamus, midbrain, hindbrain and spinal cord. FOXB1 may play a role in postnatal growth, lactation and CNS development.

细胞定位

Nuclear

Anti-FOXB1 + FOXB2 antibody 图像



All lanes : Anti-FOXB1 + FOXB2 antibody (ab72877) at 1/500 dilution

Lane 1 : 293 cell extract

Lane 2 : 293 cell extract with immunising peptide at 10 µg

Lysates/proteins at 30 µg/ml per lane.

Observed band size : 35,45 kDa

Please note: All products are "FOR RESEARCH USE ONLY AND ARE NOT INTENDED FOR DIAGNOSTIC OR THERAPEUTIC USE"

Our Abpromise to you: Quality guaranteed and expert technical support

- Replacement or refund for products not performing as stated on the datasheet
- Valid for 12 months from date of delivery
- Response to your inquiry within 24 hours
- We provide support in Chinese, English, French, German, Japanese and Spanish
- Extensive multi-media technical resources to help you
- We investigate all quality concerns to ensure our products perform to the highest standards

If the product does not perform as described on this datasheet, we will offer a refund or replacement. For full details of the Abpromise, please visit <http://www.abcam.cn/abpromise> or contact our technical team.

Terms and conditions

- Guarantee only valid for products bought direct from Abcam or one of our authorized distributors