

Product datasheet

Anti-PAK1 antibody ab71549

2 图像

概述

产品名称	Anti-PAK1抗体
描述	兔多克隆抗体to PAK1
宿主	Rabbit
经测试应用	适用于: ELISA, IHC-P, WB
种属反应性	与反应: Human
免疫原	Synthetic peptide corresponding to amino acid residues surrounding T423 of human PAK1, conjugated to KLH.
阳性对照	293 cell lysates transiently transfected with the PAK1 gene. Human colon carcinoma tissue.

性能

形式	Liquid
存放说明	Shipped at 4°C. Upon delivery aliquot and store at -20°C or -80°C. Avoid repeated freeze / thaw cycles.
存储溶液	Preservative: 0.09% Sodium Azide Constituents: PBS
纯度	Immunogen affinity purified
纯化说明	ab71549 is purified through a protein A column, followed by peptide affinity purification.
克隆	多克隆
同种型	IgG

应用

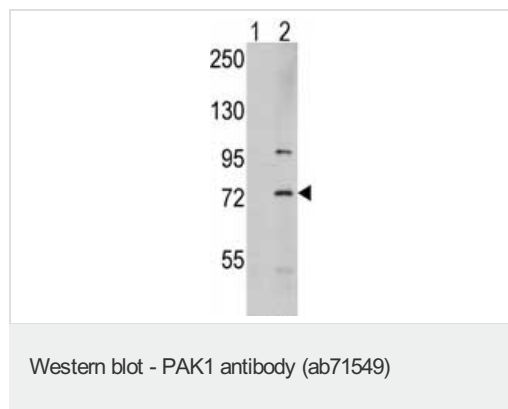
Our [Abpromise guarantee](#) covers the use of **ab71549** in the following tested applications.

The application notes include recommended starting dilutions; optimal dilutions/concentrations should be determined by the end user.

应用	Ab评论	说明
ELISA		1/1000.
IHC-P		1/10 - 1/50.

应用	Ab评论	说明
WB		1/50 - 1/100. Detects a band of approximately 75 kDa (predicted molecular weight: 61 kDa).
靶标		
功能		The activated kinase acts on a variety of targets. Likely to be the GTPase effector that links the Rho-related GTPases to the JNK MAP kinase pathway. Activated by CDC42 and RAC1. Involved in dissolution of stress fibers and reorganization of focal complexes. Involved in regulation of microtubule biogenesis through phosphorylation of TBCB. Activity is inhibited in cells undergoing apoptosis, potentially due to binding of CDC2L1 and CDC2L2.
序列相似性		Belongs to the protein kinase superfamily. STE Ser/Thr protein kinase family. STE20 subfamily. Contains 1 CRIB domain. Contains 1 protein kinase domain.
翻译后修饰		Autophosphorylated when activated by CDC42/p21 and RAC1.
细胞定位		Cytoplasm. Cell junction > focal adhesion. Recruited to focal adhesions upon activation.

图片



All lanes : Anti-PAK1 antibody (ab71549) at 1/50 dilution

Lane 1 : Nontransfected 293 cell lysate

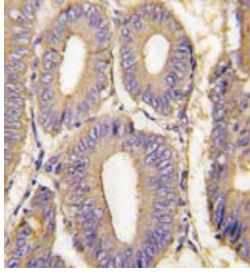
Lane 2 : 293 cell lysate transiently transfected with the PAK1 gene

Lysates/proteins at 2 µg per lane.

Predicted band size: 61 kDa

Observed band size: 75 kDa

Additional bands at: 100 kDa. We are unsure as to the identity of these extra bands.



Immunohistochemistry (Formalin/PFA-fixed paraffin-embedded sections) - PAK1 antibody (ab71549)

ab71549, at 1/10 dilution, staining PAK1 in human colon carcinoma by immunohistochemistry using formalin-fixed, paraffin-embedded tissue, followed by a peroxidase-conjugated secondary antibody and DAB staining.

Please note: All products are "FOR RESEARCH USE ONLY AND ARE NOT INTENDED FOR DIAGNOSTIC OR THERAPEUTIC USE"

Our Abpromise to you: Quality guaranteed and expert technical support

- Replacement or refund for products not performing as stated on the datasheet
- Valid for 12 months from date of delivery
- Response to your inquiry within 24 hours
- We provide support in Chinese, English, French, German, Japanese and Spanish
- Extensive multi-media technical resources to help you
- We investigate all quality concerns to ensure our products perform to the highest standards

If the product does not perform as described on this datasheet, we will offer a refund or replacement. For full details of the Abpromise, please visit <http://www.abcam.cn/abpromise> or contact our technical team.

Terms and conditions

- Guarantee only valid for products bought direct from Abcam or one of our authorized distributors