

Product datasheet

Anti-Protein Phosphatase 1 beta antibody ab70844

1 图像

概述

| | |
|-------|--|
| 产品名称 | Anti-Protein Phosphatase 1 beta抗体 |
| 描述 | 兔多克隆抗体to蛋白Phosphatase 1 beta |
| 宿主 | Rabbit |
| 经测试应用 | 适用于: ELISA, WB |
| 种属反应性 | 与反应: Mouse, Human |
| 免疫原 | Synthetic peptide from the C-terminal region of human Protein Phosphatase 1 beta, conjugated to KLH. |
| 阳性对照 | Mouse brain tissue lysate. |

性能

| | |
|------|---|
| 形式 | Liquid |
| 存放说明 | Shipped at 4°C. Upon delivery aliquot and store at -20°C or -80°C. Avoid repeated freeze / thaw cycles. |
| 存储溶液 | Preservative: 0.09% Sodium Azide Constituents: PBS |
| 纯度 | Protein G purified |
| 克隆 | 多克隆 |
| 同种型 | IgG |

应用

Our [Abpromise guarantee](#) covers the use of **ab70844** in the following tested applications.

The application notes include recommended starting dilutions; optimal dilutions/concentrations should be determined by the end user.

| 应用 | Ab评论 | 说明 |
|-------|------|---|
| ELISA | | 1/1000. |
| WB | | 1/100 - 1/500. Detects a band of approximately 33 kDa (predicted molecular weight: 37 kDa). |

靶标

功能

Protein phosphatase that associates with over 200 regulatory proteins to form highly specific holoenzymes which dephosphorylate hundreds of biological targets. Protein phosphatase (PP1) is essential for cell division, it participates in the regulation of glycogen metabolism, muscle contractility and protein synthesis. Involved in regulation of ionic conductances and long-term synaptic plasticity. Component of the PTW/PP1 phosphatase complex, which plays a role in the control of chromatin structure and cell cycle progression during the transition from mitosis into interphase. In balance with CSNK1D and CSNK1E, determines the circadian period length, through the regulation of the speed and rhythmicity of PER1 and PER2 phosphorylation. May dephosphorylate CSNK1D and CSNK1E. Dephosphorylates the 'Ser-418' residue of FOXP3 in regulatory T-cells (Treg) from patients with rheumatoid arthritis, thereby inactivating FOXP3 and rendering Treg cells functionally defective (PubMed:23396208).

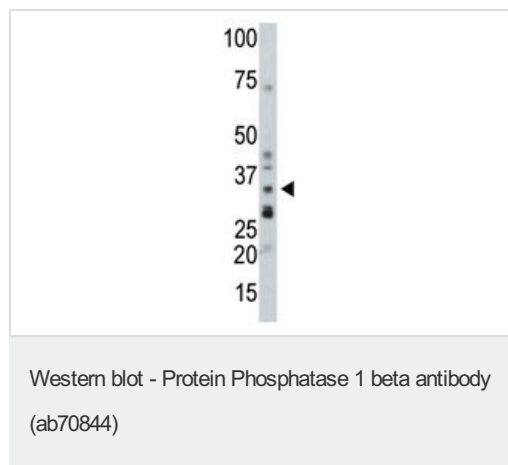
序列相似性

Belongs to the PPP phosphatase family. PP-1 subfamily.

细胞定位

Cytoplasm. Nucleus. Nucleus, nucleoplasm. Nucleus, nucleolus. Highly mobile in cells and can be relocalized through interaction with targeting subunits. In the presence of PPP1R8 relocalizes from the nucleus to nuclear speckles.

图片



Anti-Protein Phosphatase 1 beta antibody (ab70844) at 1/100 dilution + mouse brain tissue lysate at 12.5 µg

Predicted band size: 37 kDa

Observed band size: 33 kDa

Additional bands at: 28 kDa, 29 kDa, 75

kDa. We are unsure as to the identity of these extra bands.

Please note: All products are "FOR RESEARCH USE ONLY AND ARE NOT INTENDED FOR DIAGNOSTIC OR THERAPEUTIC USE"

Our Abpromise to you: Quality guaranteed and expert technical support

- Replacement or refund for products not performing as stated on the datasheet
- Valid for 12 months from date of delivery
- Response to your inquiry within 24 hours
- We provide support in Chinese, English, French, German, Japanese and Spanish
- Extensive multi-media technical resources to help you
- We investigate all quality concerns to ensure our products perform to the highest standards

If the product does not perform as described on this datasheet, we will offer a refund or replacement. For full details of the Abpromise, please visit <http://www.abcam.cn/abpromise> or contact our technical team.

Terms and conditions

- Guarantee only valid for products bought direct from Abcam or one of our authorized distributors