

## Product datasheet

# Anti-GRPEL2 antibody ab70738

### 1 图像

#### 概述

产品名称	Anti-GRPEL2抗体
描述	小鼠多克隆抗体to GRPEL2
宿主	Mouse
经测试应用	适用于: WB
种属反应性	与反应: Human
免疫原	Full length GRPEL2 protein (Human), NP_689620.2.
阳性对照	GRPEL2 transfected 293T cell lysate.

#### 性能

形式	Liquid
存放说明	Shipped at 4°C. Upon delivery aliquot and store at -20°C or -80°C. Avoid repeated freeze / thaw cycles.
存储溶液	Preservative: None Constituents: Whole serum
纯度	Whole antiserum
克隆	多克隆
同种型	IgG

#### 应用

Our [Abpromise guarantee](#) covers the use of **ab70738** in the following tested applications.

The application notes include recommended starting dilutions; optimal dilutions/concentrations should be determined by the end user.

应用	Ab评论	说明
----	------	----

WB

应用说明	WB: 1/500 - 1/1000. Detects bands of approximately 26 and 27 kDa (predicted molecular weight: 25 kDa).
------	--

Not yet tested in other applications.

Optimal dilutions/concentrations should be determined by the end user.

## 靶标

### 功能

Essential component of the PAM complex, a complex required for the translocation of transit peptide-containing proteins from the inner membrane into the mitochondrial matrix in an ATP-dependent manner. Seems to control the nucleotide-dependent binding of mitochondrial HSP70 to substrate proteins. Stimulates ATPase activity of mt-HSP70. May also serve to modulate the interconversion of oligomeric (inactive) and monomeric (active) forms of mt-HSP70.

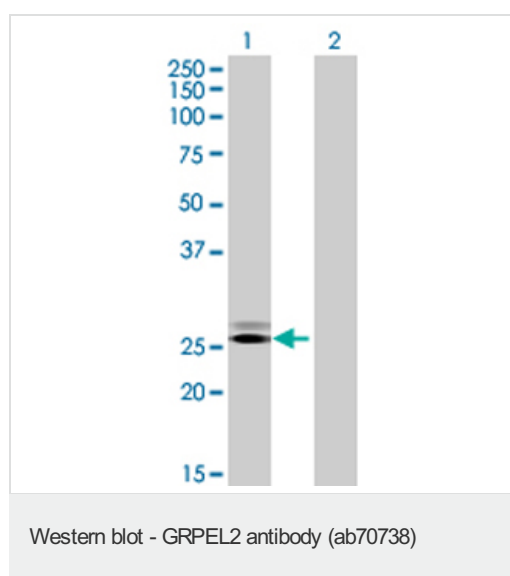
### 序列相似性

Belongs to the grpE family.

### 细胞定位

Mitochondrion matrix.

## 图片



**All lanes :** Anti-GRPEL2 antibody (ab70738)  
at 1/500 dilution

**Lane 1 :** GRPEL2 transfected 293T cell lysate

**Lane 2 :** Non-transfected 293T cell lysate

Lysates/proteins at 25 µg per lane.

### Secondary

**All lanes :** Goat Anti-Mouse IgG (H&L)-HRP  
Conjugate at 1/2500 dilution

**Predicted band size:** 25 kDa

**Observed band size:** 26 kDa

**Additional bands at:** 27 kDa. We are unsure as to the identity of these extra bands.

**Please note:** All products are "FOR RESEARCH USE ONLY AND ARE NOT INTENDED FOR DIAGNOSTIC OR THERAPEUTIC USE"

## Our Abpromise to you: Quality guaranteed and expert technical support

- Replacement or refund for products not performing as stated on the datasheet
- Valid for 12 months from date of delivery
- Response to your inquiry within 24 hours
- We provide support in Chinese, English, French, German, Japanese and Spanish
- Extensive multi-media technical resources to help you
- We investigate all quality concerns to ensure our products perform to the highest standards

If the product does not perform as described on this datasheet, we will offer a refund or replacement. For full details of the Abpromise, please visit <http://www.abcam.cn/abpromise> or contact our technical team.

## Terms and conditions

---

- Guarantee only valid for products bought direct from Abcam or one of our authorized distributors