

Product datasheet

Anti-Cdk2 antibody ab70012

1 References 2 图像

概述

产品名称	Anti-Cdk2抗体
描述	兔多克隆抗体to Cdk2
宿主	Rabbit
经测试应用	适用于: WB, ELISA, ICC/IF
种属反应性	与反应: Human 预测可用于: Mouse, Rat
免疫原	Synthesized peptide derived from an internal region of Human Cdk2.
阳性对照	Extracts from HUVEC, HepG2 or Jurkat cells; HeLa cells.

性能

形式	Liquid
存放说明	Shipped at 4°C. Upon delivery aliquot and store at -20°C. Avoid freeze / thaw cycles.
存储溶液	Preservative: 0.02% Sodium Azide Constituents: 50% Glycerol, PBS, 150mM Sodium chloride, pH 7.4
纯度	Immunogen affinity purified
克隆	多克隆
同种型	IgG

应用

Our [Abpromise guarantee](#) covers the use of **ab70012** in the following tested applications.

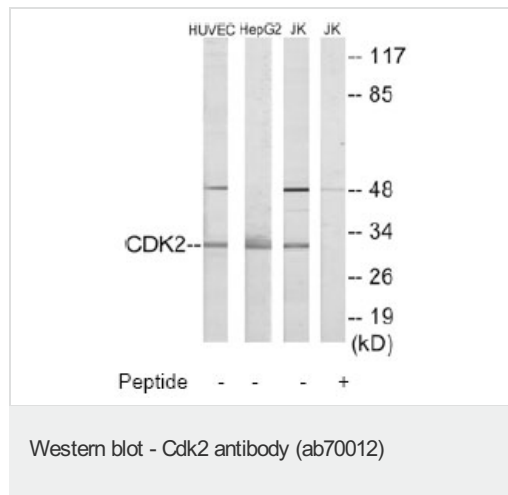
The application notes include recommended starting dilutions; optimal dilutions/concentrations should be determined by the end user.

应用	Ab评论	说明
WB		1/500 - 1/1000. Detects a band of approximately 32 kDa (predicted molecular weight: 34 kDa).
ELISA		1/20000.
ICC/IF		1/500 - 1/1000.

靶标

功能	Involved in the control of the cell cycle. Interacts with cyclins A, B1, B3, D, or E. Activity of CDK2 is maximal during S phase and G2.
序列相似性	Belongs to the protein kinase superfamily. CMGC Ser/Thr protein kinase family. CDC2/CDKX subfamily. Contains 1 protein kinase domain.

图片



All lanes : Anti-Cdk2 antibody (ab70012) at 1/500 dilution

Lane 1 : Extracts from HUVEC cells

Lane 2 : Extracts from HepG2 cells

Lane 3 : Extracts from Jurkat cells

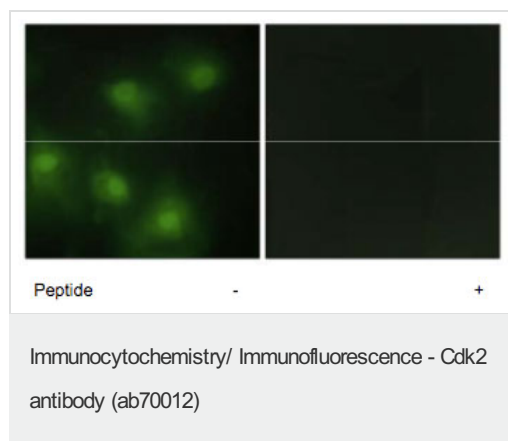
Lane 4 : Extracts from Jurkat cells with immunizing peptide at 10 µg

Lysates/proteins at 30 µg per lane.

Predicted band size: 34 kDa

Observed band size: 32 kDa

Additional bands at: 48 kDa. We are unsure as to the identity of these extra bands.



Immunofluorescence analysis of HeLa cells using 1/500 ab70012. Right: the sample was pre-incubated with the immunizing peptide

Please note: All products are "FOR RESEARCH USE ONLY AND ARE NOT INTENDED FOR DIAGNOSTIC OR THERAPEUTIC USE"

Our Abpromise to you: Quality guaranteed and expert technical support

- Replacement or refund for products not performing as stated on the datasheet
- Valid for 12 months from date of delivery
- Response to your inquiry within 24 hours

- We provide support in Chinese, English, French, German, Japanese and Spanish
- Extensive multi-media technical resources to help you
- We investigate all quality concerns to ensure our products perform to the highest standards

If the product does not perform as described on this datasheet, we will offer a refund or replacement. For full details of the Abpromise, please visit <http://www.abcam.cn/abpromise> or contact our technical team.

Terms and conditions

- Guarantee only valid for products bought direct from Abcam or one of our authorized distributors