

Product datasheet

Anti-STAT3 antibody [7G8] ab69513

1 References 2 图像

概述

产品名称	Anti-STAT3抗体[7G8]
描述	小鼠单克隆抗体[7G8] to STAT3
经测试应用	适用于: Sandwich ELISA, WB
种属反应性	与反应: Mouse, Rat, Human
免疫原	Recombinant full-length Human STAT3 expressed in baculovirus
阳性对照	HeLa cell lysate.

性能

形式	Liquid
存放说明	Shipped at 4°C. Upon delivery aliquot and store at -20°C. Avoid freeze / thaw cycles.
存储溶液	Preservative: 0.09% Sodium Azide Constituents: 50% Glycerol, PBS, BSA, pH 7.2
纯度	Protein A purified
克隆	单克隆
克隆编号	7G8
同种型	IgG1

应用

Our [Abpromise guarantee](#) covers the use of **ab69513** in the following tested applications.

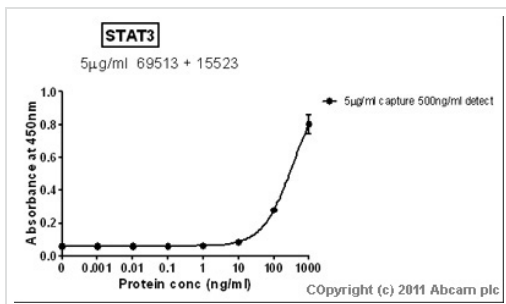
The application notes include recommended starting dilutions; optimal dilutions/concentrations should be determined by the end user.

应用	Ab 评论	说明
Sandwich ELISA		Use a concentration of 5 µg/ml. For sandwich ELISA, use this antibody as Capture at 5 µg/ml with Rabbit polyclonal to STAT3 (ab15523) as Detection.
WB		Use a concentration of 1 µg/ml. Detects a band of approximately 88 kDa (predicted molecular weight: 88 kDa).

靶标

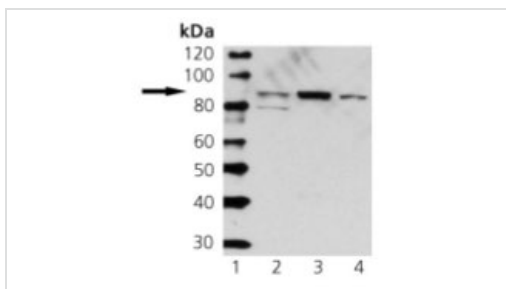
功能	Signal transducer and transcription activator that mediates cellular responses to interleukins, KITLG/SCF, LEP and other growth factors. Once activated, recruits coactivators, such as NCOA1 or MED1, to the promoter region of the target gene (PubMed:17344214). May mediate cellular responses to activated FGFR1, FGFR2, FGFR3 and FGFR4. Binds to the interleukin-6 (IL-6)-responsive elements identified in the promoters of various acute-phase protein genes. Activated by IL31 through IL31RA. Involved in cell cycle regulation by inducing the expression of key genes for the progression from G1 to S phase, such as CCND1 (PubMed:17344214). Mediates the effects of LEP on melanocortin production, body energy homeostasis and lactation (By similarity). May play an apoptotic role by transactivating BIRC5 expression under LEP activation (PubMed:18242580). Cytoplasmic STAT3 represses macroautophagy by inhibiting EIF2AK2/PKR activity.
组织特异性	Heart, brain, placenta, lung, liver, skeletal muscle, kidney and pancreas.
疾病相关	Hyperimmunoglobulin E recurrent infection syndrome, autosomal dominant Autoimmune disease, multisystem, infantile-onset
序列相似性	Belongs to the transcription factor STAT family. Contains 1 SH2 domain.
翻译后修饰	Tyrosine phosphorylated upon stimulation with EGF. Tyrosine phosphorylated in response to constitutively activated FGFR1, FGFR2, FGFR3 and FGFR4 (By similarity). Activated through tyrosine phosphorylation by BMX. Tyrosine phosphorylated in response to IL6, IL11, LIF, CNTF, KITLG/SCF, CSF1, EGF, PDGF, IFN-alpha, LEP and OSM. Activated KIT promotes phosphorylation on tyrosine residues and subsequent translocation to the nucleus. Phosphorylated on serine upon DNA damage, probably by ATM or ATR. Serine phosphorylation is important for the formation of stable DNA-binding STAT3 homodimers and maximal transcriptional activity. ARL2BP may participate in keeping the phosphorylated state of STAT3 within the nucleus. Upon LPS challenge, phosphorylated within the nucleus by IRAK1. Upon erythropoietin treatment, phosphorylated on Ser-727 by RPS6KA5. Phosphorylation at Tyr-705 by PTK6 or FER leads to an increase of its transcriptional activity. Dephosphorylation on tyrosine residues by PTPN2 negatively regulates IL6/interleukin-6 signaling.
细胞定位	Cytoplasm. Nucleus. Shuttles between the nucleus and the cytoplasm. Translocated into the nucleus upon tyrosine phosphorylation and dimerization, in response to signaling by activated FGFR1, FGFR2, FGFR3 or FGFR4. Constitutive nuclear presence is independent of tyrosine phosphorylation. Predominantly present in the cytoplasm without stimuli. Upon leukemia inhibitory factor (LIF) stimulation, accumulates in the nucleus. The complex composed of BART and ARL2 plays an important role in the nuclear translocation and retention of STAT3. Identified in a complex with LYN and PAG1.

图片



Sandwich ELISA - STAT3 antibody [7G8] (ab69513)

Standard Curve for STAT3 (Analyte: **STAT3 protein (Tagged) (ab43618)**); dilution range 1pg/ml to 1µg/ml using Capture Antibody **Mouse monoclonal [7G8] to STAT3 (ab69513)** at 5µg/ml and Detector Antibody **Rabbit polyclonal to STAT3 (ab15523)** at 0.5µg/ml.



Western blot - STAT3 antibody [7G8] (ab69513)

All lanes : Anti-STAT3 antibody [7G8] (ab69513) at 1 µg/ml

Lane 1 : MW markers

Lane 2 : A431 cell lysate

Lane 3 : HeLa cell lysate

Lane 4 : NIH-3T3 cell lysate

Developed using the ECL technique

Predicted band size : 88 kDa

Observed band size : 88 kDa

Please note: All products are "FOR RESEARCH USE ONLY AND ARE NOT INTENDED FOR DIAGNOSTIC OR THERAPEUTIC USE"

Our Abpromise to you: Quality guaranteed and expert technical support

- Replacement or refund for products not performing as stated on the datasheet
- Valid for 12 months from date of delivery
- Response to your inquiry within 24 hours
- We provide support in Chinese, English, French, German, Japanese and Spanish
- Extensive multi-media technical resources to help you
- We investigate all quality concerns to ensure our products perform to the highest standards

If the product does not perform as described on this datasheet, we will offer a refund or replacement. For full details of the Abpromise, please visit <http://www.abcam.cn/abpromise> or contact our technical team.

Terms and conditions

- Guarantee only valid for products bought direct from Abcam or one of our authorized distributors