

Product datasheet

Anti-Phosphoserine Aminotransferase antibody ab67367

1 图像

概述

产品名称	Anti-Phosphoserine Aminotransferase抗体
描述	小鼠多克隆抗体to Phosphoserine Aminotransferase
宿主	Mouse
经测试应用	适用于: WB
种属反应性	与反应: Human
免疫原	Full length Phosphoserine Aminotransferase protein (Human)
阳性对照	Phosphoserine Aminotransferase transfected 293T cell lysate

性能

形式	Liquid
存放说明	Shipped at 4°C. Upon delivery aliquot and store at -20°C or -80°C. Avoid repeated freeze / thaw cycles.
存储溶液	Preservative: None Constituents: 1X PBS, pH 7.2
纯度	Protein A purified
克隆	多克隆
同种型	IgG

应用

Our [Abpromise guarantee](#) covers the use of **ab67367** in the following tested applications.

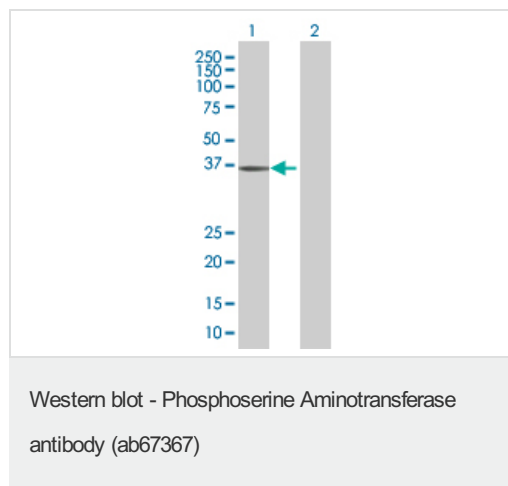
The application notes include recommended starting dilutions; optimal dilutions/concentrations should be determined by the end user.

应用	Ab评论	说明
WB		1/500 - 1/1000. Detects a band of approximately 37 kDa (predicted molecular weight: 40 kDa).

靶标

功能	Catalyzes the reversible conversion of 3-phosphohydroxypyruvate to phosphoserine and of 3-hydroxy-2-oxo-4-phosphonooxybutanoate to phosphohydroxythreonine.
组织特异性	Expressed at high levels in the brain, liver, kidney and pancreas, and very weakly expressed in the thymus, prostate, testis and colon.
通路	Amino-acid biosynthesis; L-serine biosynthesis; L-serine from 3-phospho-D-glycerate: step 2/3. Cofactor biosynthesis; pyridoxine 5'-phosphate biosynthesis; pyridoxine 5'-phosphate from D-erythrose 4-phosphate: step 3/5.
疾病相关	Defects in PSAT1 are the cause of phosphoserine aminotransferase deficiency (PSATD) [MIM:610992]. PSATD is characterized biochemically by low plasma and cerebrospinal fluid concentrations of serine and glycine and clinically by intractable seizures, acquired microcephaly, hypertonia, and psychomotor retardation.
序列相似性	Belongs to the class-V pyridoxal-phosphate-dependent aminotransferase family. SerC subfamily.

图片



All lanes : Anti-Phosphoserine

Aminotransferase antibody (ab67367) at 1/500 dilution

Lane 1 : Phosphoserine Aminotransferase transfected 293T cell lysate

Lane 2 : Non transfected 293T cell lysate

Lysates/proteins at 25 µg per lane.

Secondary

All lanes : Goat Anti-Mouse IgG (H&L)-HRP

Conjugate secondary antibody at 1/2500 dilution

Predicted band size: 40 kDa

Observed band size: 37 kDa

Please note: All products are "FOR RESEARCH USE ONLY AND ARE NOT INTENDED FOR DIAGNOSTIC OR THERAPEUTIC USE"

Our Abpromise to you: Quality guaranteed and expert technical support

- Replacement or refund for products not performing as stated on the datasheet
- Valid for 12 months from date of delivery
- Response to your inquiry within 24 hours
- We provide support in Chinese, English, French, German, Japanese and Spanish
- Extensive multi-media technical resources to help you

- We investigate all quality concerns to ensure our products perform to the highest standards

If the product does not perform as described on this datasheet, we will offer a refund or replacement. For full details of the Abpromise, please visit <http://www.abcam.cn/abpromise> or contact our technical team.

Terms and conditions

- Guarantee only valid for products bought direct from Abcam or one of our authorized distributors