


Product datasheet

Anti-Cytochrome b5 antibody [36] ab67333

1 图像

概述

产品名称	Anti-Cytochrome b5抗体[36]
描述	小鼠单克隆抗体[36] to Cytochrome b5
宿主	Mouse
经测试应用	适用于: WB, ELISA
种属反应性	与反应: Recombinant fragment 预测可用于: Human 
免疫原	Recombinant full length protein (Human) expressed in E. coli

性能

形式	Liquid
存放说明	Shipped at 4°C. Upon delivery aliquot and store at -20°C. Avoid freeze / thaw cycles.
存储溶液	Preservative: 0.02% Proclin Constituents: Tris HCl, Sodium citrate, pH 7.0
纯度	Protein A purified
克隆	单克隆
克隆编号	36
同种型	IgG2a

应用

Our [Abpromise guarantee](#) covers the use of **ab67333** in the following tested applications.

The application notes include recommended starting dilutions; optimal dilutions/concentrations should be determined by the end user.

应用	Ab评论	说明
----	------	----

WB

ELISA

应用说明 ELISA: Use at an assay dependent dilution.

WB: 1/1000. Detects a band of approximately 48 kDa (predicted molecular weight: 15 kDa).

This antibody has only been tested against the recombinant fragment, and not the endogenous protein.

Not yet tested in other applications.

Optimal dilutions/concentrations should be determined by the end user.

## 靶标

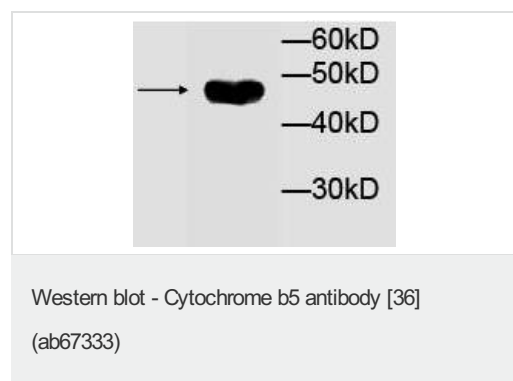
**功能** Cytochrome b5 is a membrane bound hemoprotein which function as an electron carrier for several membrane bound oxygenases.

**疾病相关** Defects in CYB5A are the cause of methemoglobinemia CYB5A-related (METHB-CYB5A) [MIM:250790]. A form of methemoglobinemia, a hematologic disease characterized by the presence of excessive amounts of methemoglobin in blood cells, resulting in decreased oxygen carrying capacity of the blood, cyanosis and hypoxia.

**序列相似性** Belongs to the cytochrome b5 family.  
Contains 1 cytochrome b5 heme-binding domain.

**细胞定位** Cytoplasm and Endoplasmic reticulum membrane. Microsome membrane.

## 图片



Anti-Cytochrome b5 antibody [36] (ab67333)  
at 1/1000 dilution + Human recombinant  
Cytochrome b5 protein

**Predicted band size:** 15 kDa

**Observed band size:** 48 kDa

The observed band size may not correspond to the predicted molecular weight as a recombinant protein was used for the test lane

**Please note:** All products are "FOR RESEARCH USE ONLY AND ARE NOT INTENDED FOR DIAGNOSTIC OR THERAPEUTIC USE"

## Our Abpromise to you: Quality guaranteed and expert technical support

- Replacement or refund for products not performing as stated on the datasheet
- Valid for 12 months from date of delivery
- Response to your inquiry within 24 hours
- We provide support in Chinese, English, French, German, Japanese and Spanish
- Extensive multi-media technical resources to help you

- We investigate all quality concerns to ensure our products perform to the highest standards

If the product does not perform as described on this datasheet, we will offer a refund or replacement. For full details of the Abpromise, please visit <http://www.abcam.cn/abpromise> or contact our technical team.

### **Terms and conditions**

---

- Guarantee only valid for products bought direct from Abcam or one of our authorized distributors