

## Product datasheet

# Anti-PSMA8 antibody ab66148

### 1 图像

#### 概述

<b>产品名称</b>	Anti-PSMA8抗体
<b>描述</b>	小鼠多克隆抗体to PSMA8
<b>宿主</b>	Mouse
<b>经测试应用</b>	<b>适用于:</b> WB, ELISA
<b>种属反应性</b>	<b>与反应:</b> Human <b>预测可用于:</b> Mouse, Rat, Horse, Cow, Chimpanzee, Cynomolgus monkey, Rhesus monkey, Opossum
<b>免疫原</b>	Recombinant fragment corresponding to Human PSMA8 aa 143-243. Sequence: GFDDDGISRLYQTDPSGTYHAWKANAIGRSAKTVREFLEKNYTEDIAISD SEAIKLAIKALLEVVQSGGRNIELAIIRRNQPLKMFSAKEVELYVTEIEK  Database link: <a href="#">Q8TAA3</a>  <a href="#">Run BLAST with</a> <a href="#">Run BLAST with</a>
<b>阳性对照</b>	U-2 OS cell lysate.

#### 性能

<b>形式</b>	Liquid
<b>存放说明</b>	Shipped at 4°C. Upon delivery aliquot and store at -20°C. Avoid freeze / thaw cycles.
<b>存储溶液</b>	Preservative: None Constituents: 50% Glycerol, Whole serum
<b>纯度</b>	Whole antiserum
<b>克隆</b>	多克隆
<b>同种型</b>	IgG

#### 应用

Our [Abpromise guarantee](#) covers the use of **ab66148** in the following tested applications.

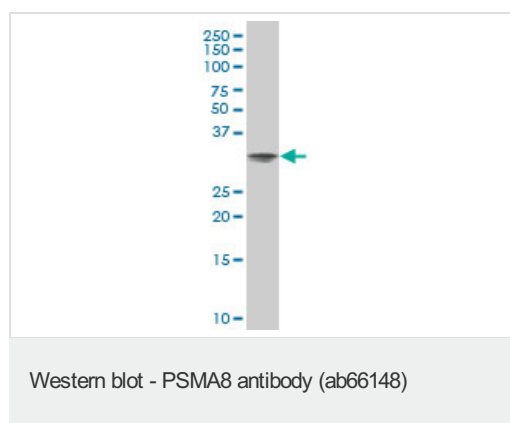
The application notes include recommended starting dilutions; optimal dilutions/concentrations should be determined by the end user.

应用	Ab评论	说明
WB		1/500 - 1/1000. Detects a band of approximately 29 kDa (predicted molecular weight: 29 kDa).
ELISA		Use at an assay dependent dilution.

## 靶标

功能	The proteasome is a multicatalytic proteinase complex which is characterized by its ability to cleave peptides with Arg, Phe, Tyr, Leu, and Glu adjacent to the leaving group at neutral or slightly basic pH. The proteasome has an ATP-dependent proteolytic activity (By similarity). This may be a testis-specific subunit.
序列相似性	Belongs to the peptidase T1A family.
细胞定位	Cytoplasm. Nucleus.

## 图片



Anti-PSMA8 antibody (ab66148) at 1/500 dilution + U-2 OS cell lysate at 50 µg

### Secondary

Goat Anti-Mouse IgG (H&L)-HRP at 1/2500 dilution

**Predicted band size:** 29 kDa

**Observed band size:** 29 kDa

**Please note:** All products are "FOR RESEARCH USE ONLY AND ARE NOT INTENDED FOR DIAGNOSTIC OR THERAPEUTIC USE"

## Our Abpromise to you: Quality guaranteed and expert technical support

- Replacement or refund for products not performing as stated on the datasheet
- Valid for 12 months from date of delivery
- Response to your inquiry within 24 hours
- We provide support in Chinese, English, French, German, Japanese and Spanish
- Extensive multi-media technical resources to help you
- We investigate all quality concerns to ensure our products perform to the highest standards

If the product does not perform as described on this datasheet, we will offer a refund or replacement. For full details of the Abpromise, please visit <http://www.abcam.cn/abpromise> or contact our technical team.

## Terms and conditions

---

- Guarantee only valid for products bought direct from Abcam or one of our authorized distributors