

Product datasheet

Anti-Methionine Sulfoxide Reductase B antibody ab66061

2 References 1 图像

概述

产品名称	Anti-Methionine Sulfoxide Reductase B抗体
描述	小鼠单克隆抗体to Methionine Sulfoxide Reductase B
宿主	Mouse
经测试应用	适用于: ELISA, WB
种属反应性	与反应: Human 预测可用于: Mouse, Rat, Chicken, Cow, Dog, Pig, Chimpanzee, Rhesus monkey, Orangutan



免疫原	Recombinant fragment with tag: MSFCSFFGGE VFQNHFE PGV YVCAKCGYEL FSSRSKYAHS SPWPAFTETIHADSVAKRPE HNRSEALKVS CGKCGNGLGH EFLN, corresponding to N terminal amino acids 1-85 of Human Methionine Sulfoxide Reductase B Run BLAST with ExPASy Run BLAST with NCBI
-----	--

阳性对照	Methionine Sulfoxide Reductase B transfected 293T cell lysate.
------	--

性能

形式	Liquid
存放说明	Shipped at 4°C. Upon delivery aliquot and store at -20°C or -80°C. Avoid repeated freeze / thaw cycles.
存储溶液	Preservative: None Constituents: PBS, pH 7.2
纯度	Protein G purified
克隆	单克隆
同种型	IgG1

应用

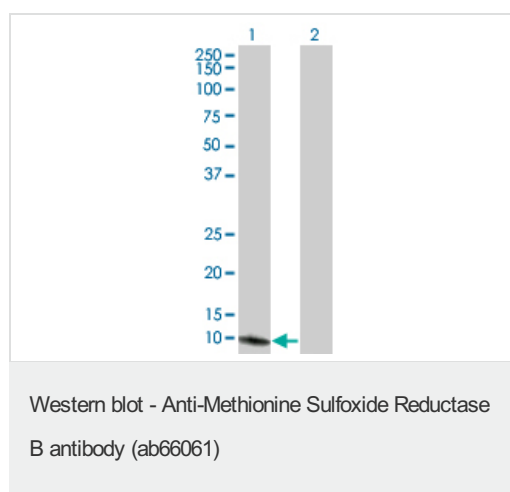
Our [Abpromise guarantee](#) covers the use of **ab66061** in the following tested applications.
The application notes include recommended starting dilutions; optimal dilutions/concentrations should be determined by the end user.

应用	Ab评论	说明
ELISA		Use at an assay dependent dilution.
WB		Use a concentration of 1 - 5 µg/ml. Detects a band of approximately 10 kDa (predicted molecular weight: 13 kDa).

靶标

序列相似性	Belongs to the MsrB Met sulfoxide reductase family.
细胞定位	Cytoplasm. Nucleus.

图片



All lanes : Anti-Methionine Sulfoxide Reductase B antibody (ab66061) at 1 µg/ml

Lane 1 : Methionine Sulfoxide Reductase B transfected 293T cell lysate

Lane 2 : Non-transfected 293T cell lysate

Lysates/proteins at 50 µg per lane.

Secondary

All lanes : Goat Anti-Mouse IgG (H&L)-HRP at 1/2500 dilution

Predicted band size: 13 kDa

Observed band size: 10 kDa

Please note: All products are "FOR RESEARCH USE ONLY AND ARE NOT INTENDED FOR DIAGNOSTIC OR THERAPEUTIC USE"

Our Abpromise to you: Quality guaranteed and expert technical support

- Replacement or refund for products not performing as stated on the datasheet
- Valid for 12 months from date of delivery
- Response to your inquiry within 24 hours
- We provide support in Chinese, English, French, German, Japanese and Spanish
- Extensive multi-media technical resources to help you
- We investigate all quality concerns to ensure our products perform to the highest standards

If the product does not perform as described on this datasheet, we will offer a refund or replacement. For full details of the Abpromise, please visit <http://www.abcam.cn/abpromise> or contact our technical team.

Terms and conditions

- Guarantee only valid for products bought direct from Abcam or one of our authorized distributors