


## Product datasheet

# Anti-Arp2 antibody ab65735

### 2 图像

#### 概述

产品名称	Anti-Arp2抗体
描述	兔多克隆抗体to Arp2
宿主	Rabbit
经测试应用	适用于: WB, IHC-P
种属反应性	与反应: Human 预测可用于: Mouse, Rat, Rabbit, Horse, Chicken, Guinea pig, Cow, Cat, Dog, Pig, Zebrafish 
免疫原	Synthetic peptide: LEVNYPMENG IVRNWDDMKH LWDYTFGPEK LNIDTRNCKI LLTEPPMNPT, corresponding to a region within N terminal amino acids 73-122 of Human Arp2 <a href="#">Run BLAST with ExPASy</a> <a href="#">Run BLAST with NCBI</a>
阳性对照	Jurkat cell lysate. Human muscle.

#### 性能

形式	Liquid
存放说明	Shipped at 4°C. Upon delivery aliquot and store at -20°C. Avoid freeze / thaw cycles.
存储溶液	Preservative: None Constituents: 2% Sucrose, PBS
纯度	Protein A purified
克隆	多克隆
同种型	IgG

#### 应用

Our [Abpromise guarantee](#) covers the use of **ab65735** in the following tested applications.

The application notes include recommended starting dilutions; optimal dilutions/concentrations should be determined by the end user.

应用	Ab 评论	说明
----	-------	----

WB Use a concentration of 2.5 µg/ml. Detects a band of approximately 45 kDa (predicted molecular weight: 45 kDa). Good results were obtained when blocked with 5% non-fat dry milk in 0.05% PBS-T.

IHC-P Use a concentration of 4 - 8 µg/ml.

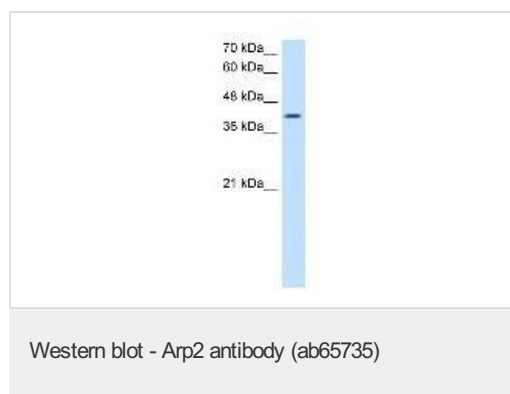
## 靶标

**功能** Functions as ATP-binding component of the Arp2/3 complex which is involved in regulation of actin polymerization and together with an activating nucleation-promoting factor (NPF) mediates the formation of branched actin networks. Seems to contact the pointed end of the daughter actin filament.

**序列相似性** Belongs to the actin family. ARP2 subfamily.

**细胞定位** Cytoplasm > cytoskeleton. Cell projection.

## 图片



Anti-Arp2 antibody (ab65735) at 2.5 µg/ml + Jurkat cell lysate at 10 µg

### Secondary

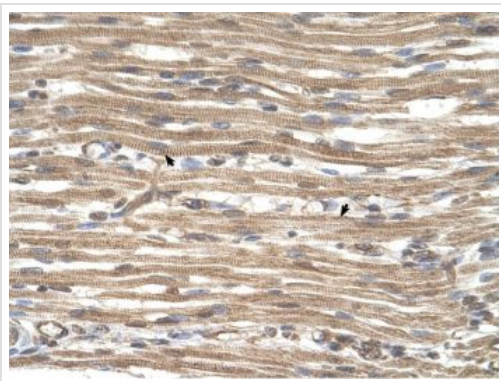
HRP conjugated anti-Rabbit IgG at 1/50000 dilution

**Predicted band size:** 45 kDa

**Observed band size:** 45 kDa

Antibody diluted in 5% skim milk / PBS buffer.

Gel concentration: 12%.



Immunohistochemical analysis of paraffin-embedded human muscle tissue stained with ab65735 at 4µg/ml. Positively stained skeletal muscle cells are indicated with arrows.

Immunohistochemistry (Formalin/PFA-fixed paraffin-embedded sections) - Anti-Arp2 antibody (ab65735)

**Please note:** All products are "FOR RESEARCH USE ONLY AND ARE NOT INTENDED FOR DIAGNOSTIC OR THERAPEUTIC USE"

### Our Abpromise to you: Quality guaranteed and expert technical support

---

- Replacement or refund for products not performing as stated on the datasheet
- Valid for 12 months from date of delivery
- Response to your inquiry within 24 hours
- We provide support in Chinese, English, French, German, Japanese and Spanish
- Extensive multi-media technical resources to help you
- We investigate all quality concerns to ensure our products perform to the highest standards

If the product does not perform as described on this datasheet, we will offer a refund or replacement. For full details of the Abpromise, please visit <http://www.abcam.cn/abpromise> or contact our technical team.

### Terms and conditions

---

- Guarantee only valid for products bought direct from Abcam or one of our authorized distributors